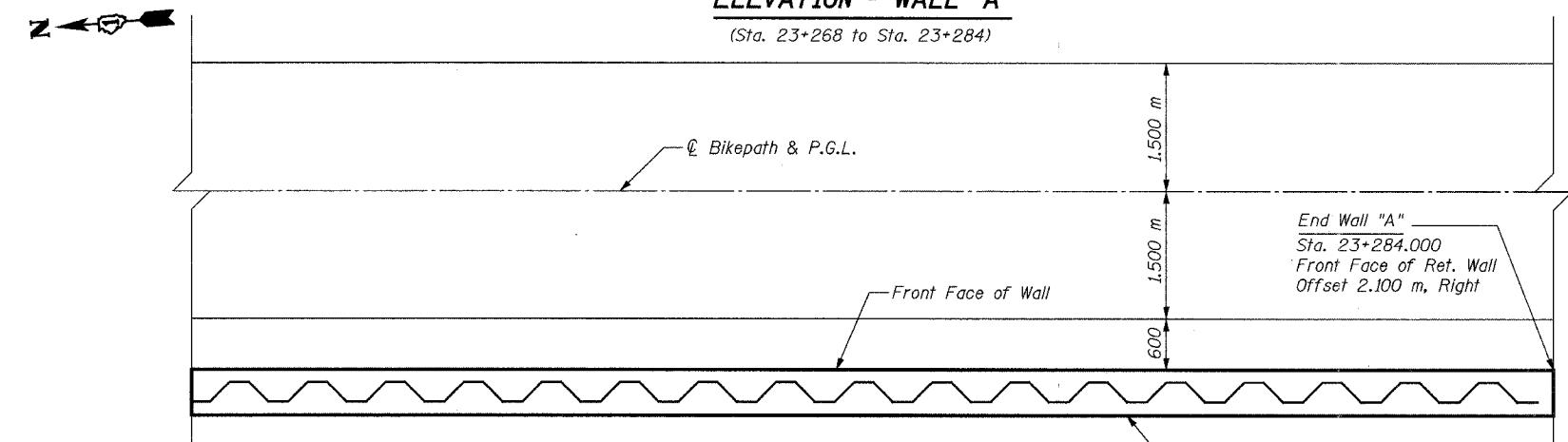
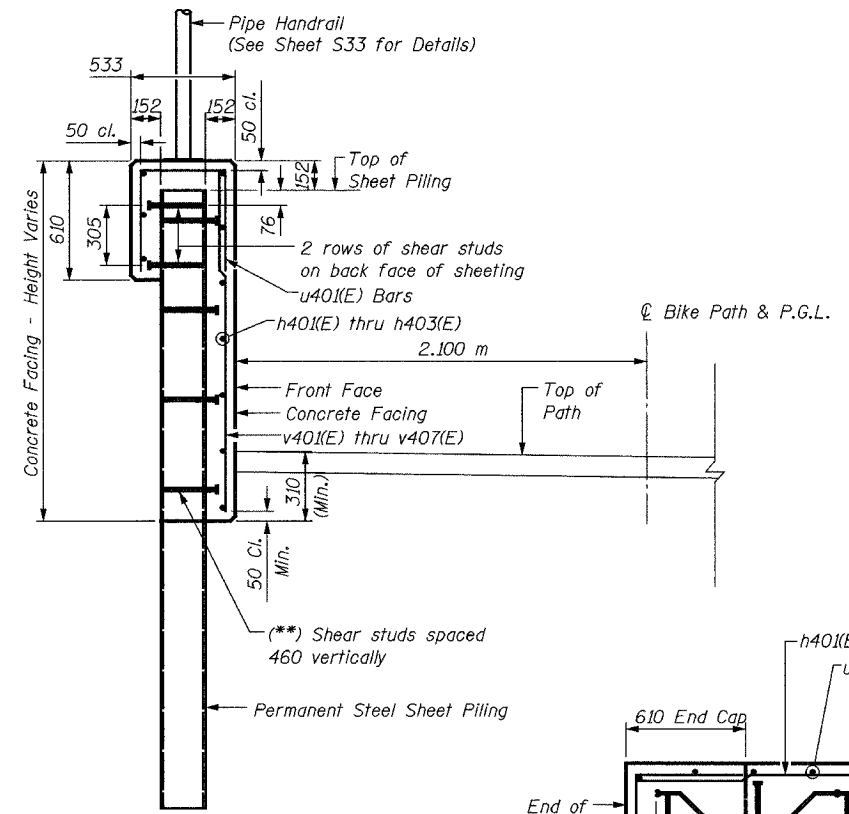
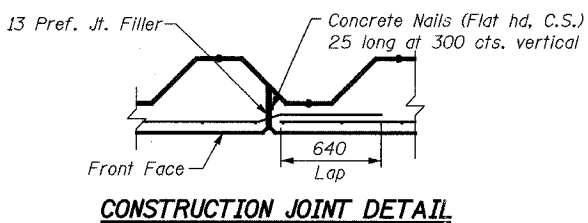
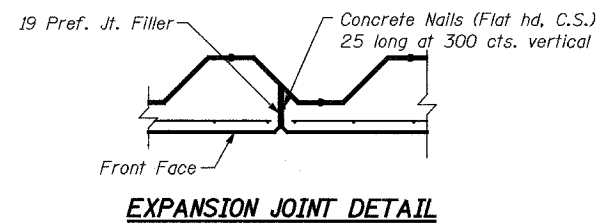
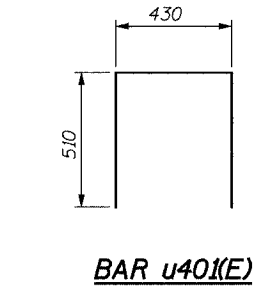


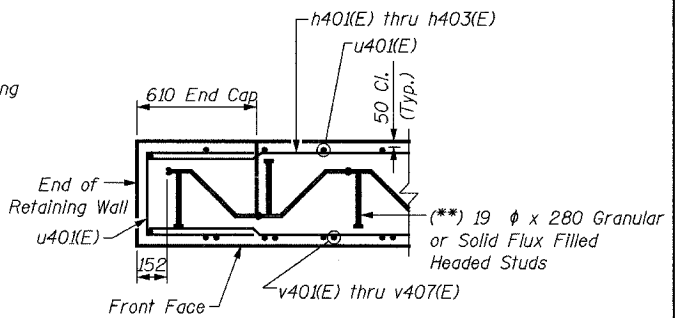
ELEVATION - WALL "A"
(Sta. 23+268 to Sta. 23+284)



PLAN - WALL "A"
(Sta. 23+268 to Sta. 23+284)
(Reinforcement Omitted for Clarity)



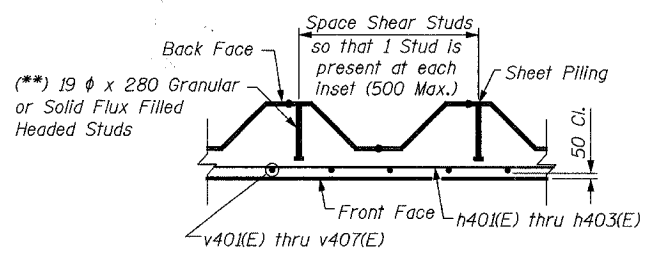
SECTION THRU WALL "A"
(Section Sta. 23+253.423 to Sta. 23+284)



SECTION THRU CAP

() NOTE:**

Shear Studs shall be 19 dia. x 208 Granular or Solid Flux Filled Headed Studs conforming to 505.08 (m) of the Standard Specifications automatically end welded in the field to Sheet Piling. The cost of the studs is included in the cost of PERMANENT STEEL SHEET PILING.



TYPICAL SECTION THRU WALL

BILL OF MATERIAL

Bar	No.	Size	Length	Shape
h402(E)	12	#15	8.64 m	—
h403(E)	12	#15	7.90 m	—
u401(E)	63	#15	1.45 m	□
v405(E)	14	#15	2.35 m	—
v406(E)	27	#15	2.62 m	—
v407(E)	15	#15	1.92 m	—
Concrete Structures		Cu. M	12.0	
Reinforcement Bars, Epoxy Coated		kg	670	
Structure Excavation		Cu. M	9	
Permanent Steel Sheet Piling		Sq. M	84	
Pipe Handrail		Meter	16	

NOTES:

For notes see Sheet S18.

SHEET S19 of S33

REVISIONS		<p>1701 GOLF ROAD, SUITE 1000 ROLLING MEADOWS, IL 60008 TEL (847) 228-0707 FAX (847) 228-1115</p>
NAME	DATE	
<p>VILLAGE OF OAKBROOK SALT CREEK GREENWAY TRAIL WALL "A", STA. 23+268 TO STA. 23+284, PLAN & ELEVATION</p>		<p>DATE: 06/30/05 DESIGNED BY: MDS</p>
<p>DRAWN BY: MDS CHECKED BY: GAT</p>		