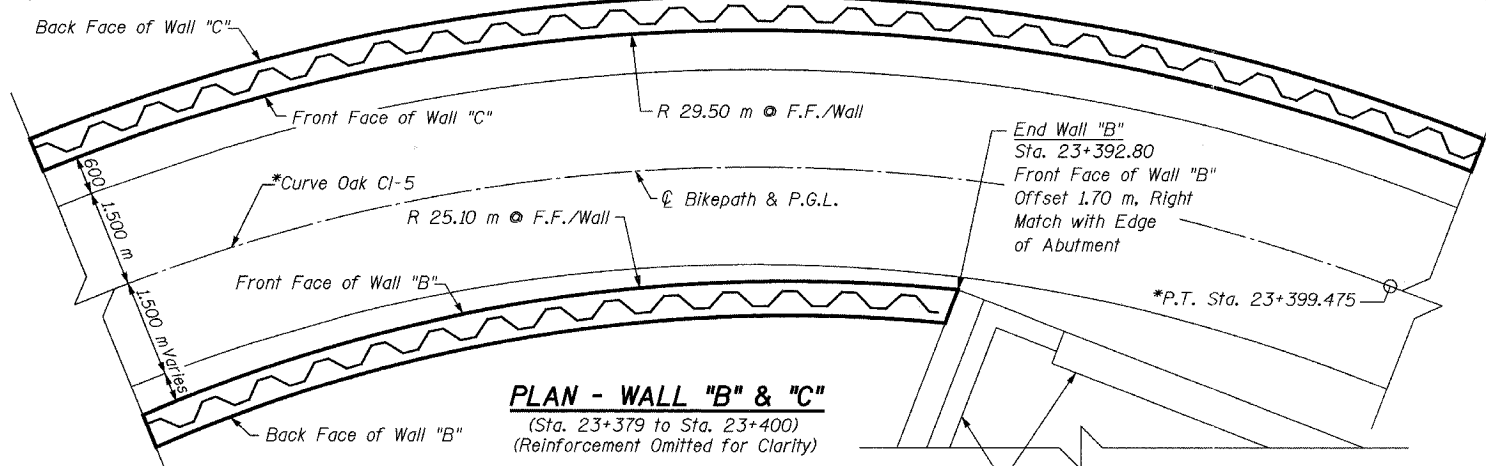
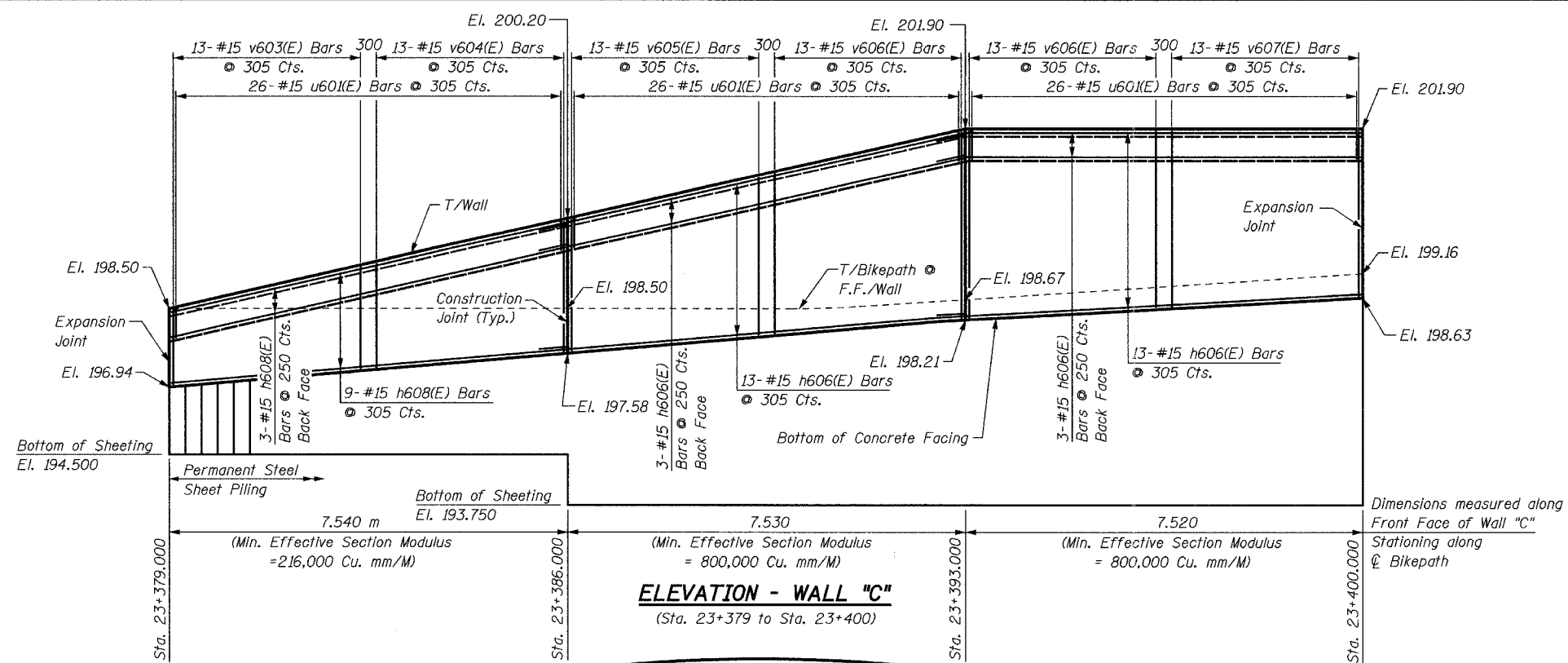
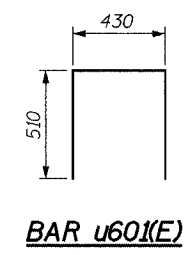


BILL OF MATERIAL

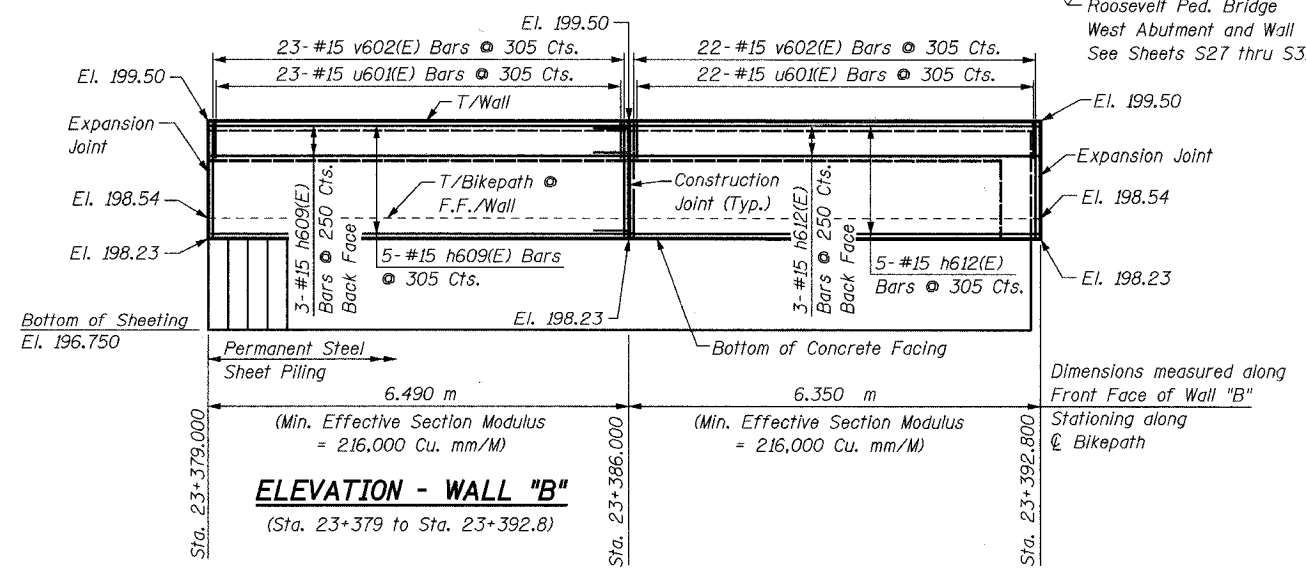
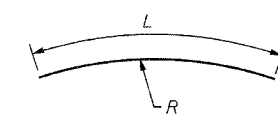
| Bar | No. | Size | Length | Shape |
|----------------------------------|-----|------|--------|-------|
| h606(E) | 32 | #15 | 8.02 m | — |
| h608(E) | 12 | #15 | 7.44 m | — |
| h609(E) | 8 | #15 | 6.40 m | — |
| h612(E) | 8 | #15 | 6.83 m | — |
| u601(E) | 128 | #15 | 1.45 m | ⊏ |
| v602(E) | 45 | #15 | 1.17 m | — |
| v603(E) | 13 | #15 | 1.99 m | — |
| v604(E) | 13 | #15 | 2.52 m | — |
| v605(E) | 13 | #15 | 3.05 m | — |
| v606(E) | 26 | #15 | 3.59 m | — |
| v607(E) | 13 | #15 | 3.38 m | — |
| Concrete Structures | | | Cu. M | 33.7 |
| Reinforcement Bars, Epoxy Coated | | | kg | 1670 |
| Structure Excavation | | | Cu. M | 33 |
| Permanent Steel | | | | |
| Sheet Piling | | | Sq. M | 183 |
| Pipe Handrail | | | Meter | 23 |



***NOTE:**
For horizontal curve and alignment information, see Plan & Profile drawings.



| Bar | R | L |
|---------|---------|--------|
| h606(E) | 29.56 m | 8.02 m |
| h608(E) | 29.56 m | 7.44 m |
| h609(E) | 25.15 m | 6.40 m |
| h612(E) | 25.15 m | 6.83 m |



NOTES:
See Sheet S21 for Notes.

SHEET S24 of S33

| REVISIONS | | NAME | DATE |
|-----------|-------------|------|------|
| NO. | DESCRIPTION | | |
| | | | |
| | | | |
| | | | |
| | | | |
| | | | |
| | | | |
| | | | |
| | | | |
| | | | |

1701 GOLF ROAD, SUITE 1000
ROLLING MEADOWS, IL 60008

TEL (847) 228-0707
FAX (847) 228-1115

VILLAGE OF OAKBROOK

SALT CREEK GREENWAY TRAIL

RET. WALL STA. 23+379 TO 23+400

PLAN & ELEVATION

DATE: 06/30/05
DESIGNED BY: MDS

DRAWN BY: MDS
CHECKED BY: GAT