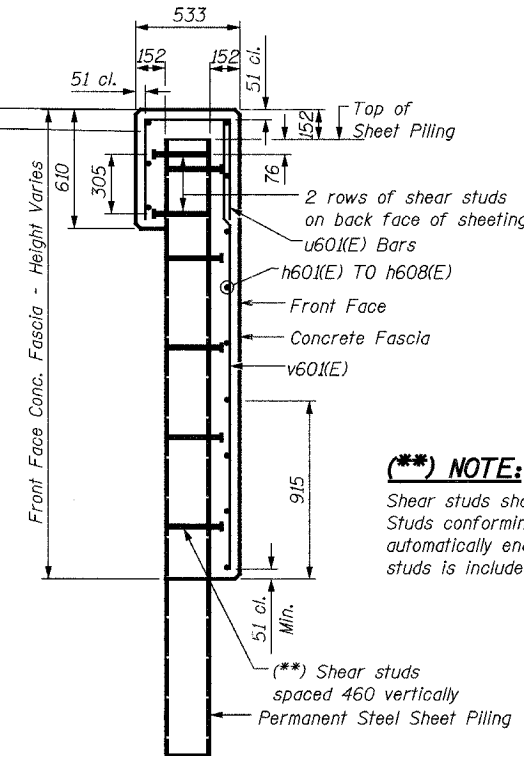


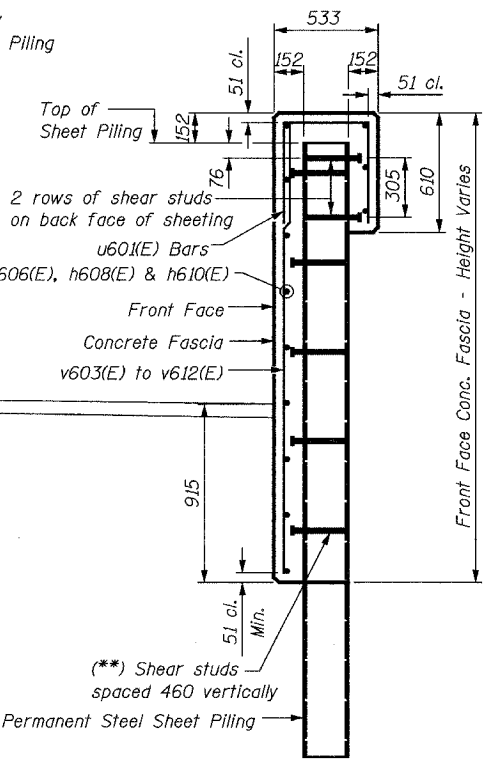
**SECTION THRU WALL "B"**  
 (Section Sta. 23+317 to Sta. 23+379)



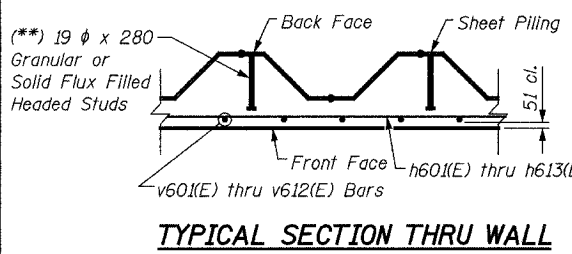
**(\*\*) NOTE:**

Shear studs shall be 19 dia. x 280 Granular or Solid Flux Headed Studs conforming to 505.08 (m) of the Standard Specifications automatically end welded, in the field to Sheet Piling. The cost of the studs is included in the cost of PERMANENT STEEL SHEET PILING.

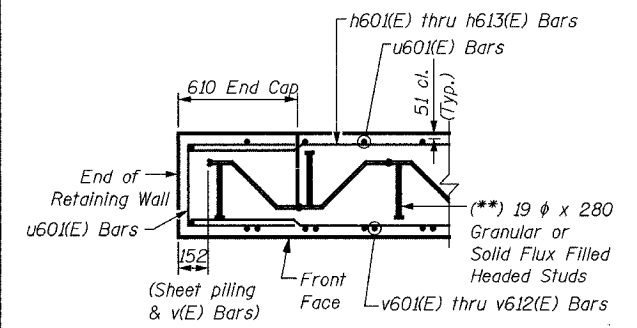
**SECTION THRU WALL "C"**  
 (Section Sta. 23+317 to Sta. 23+379)



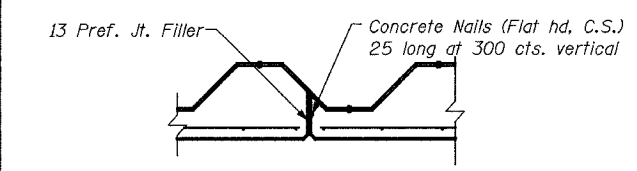
**SECTION THRU WALL "C"**  
 (Section Sta. 23+379 to Sta. 23+422.268)



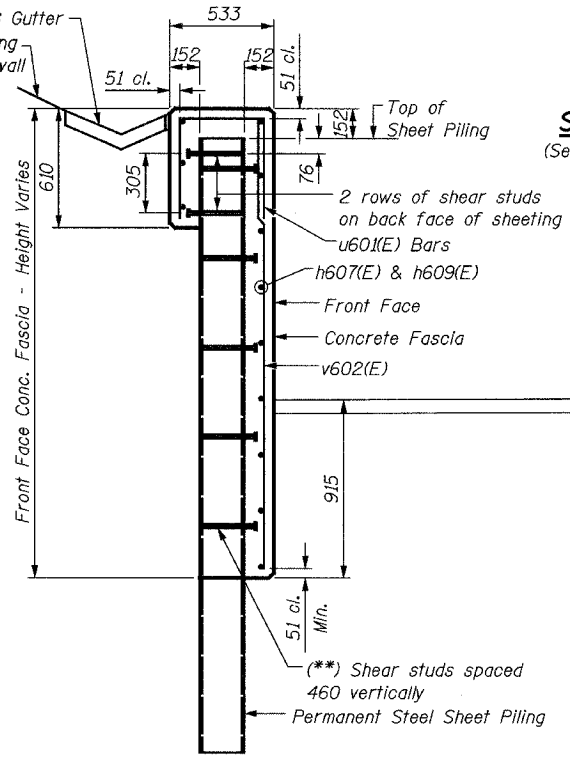
**TYPICAL SECTION THRU WALL**



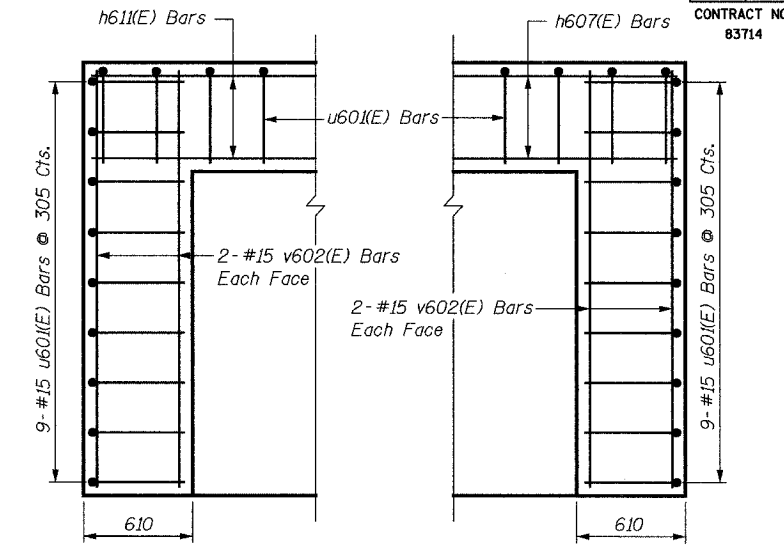
**SECTION THRU CAP**



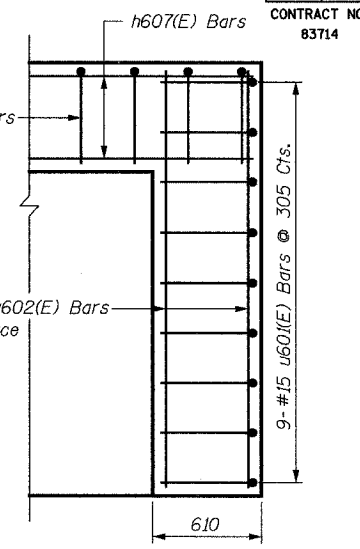
**CONSTRUCTION JOINT DETAILS**



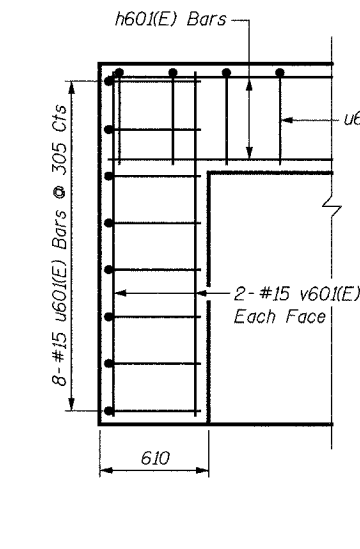
**SECTION THRU WALL "B"**  
 (Section Sta. 23+379 to Sta. 23+392.80)



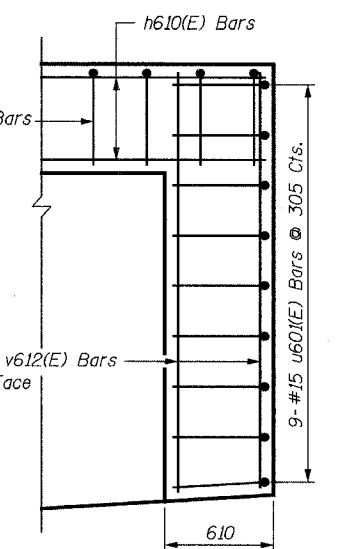
**END CAP WALL REINFORCEMENT**  
 (Wall B, North End)



**END CAP WALL REINFORCEMENT**  
 (Wall B, South End)



**END CAP WALL REINFORCEMENT**  
 (Wall C, North End)



**END CAP WALL REINFORCEMENT**  
 (Wall C, South End)

**NOTES:**

See Sheet S21 for Notes.

SHEET S26 of S33

REVISIONS		NAME	DATE
NO.	DESCRIPTION		

**URS**

1701 GOLF ROAD, SUITE 1000  
 ROLLING MEADOWS, IL 60008

TEL (847) 228-0707  
 FAX (847) 228-1115

VILLAGE OF OAKBROOK  
**SALT CREEK GREENWAY TRAIL  
 RET. WALL "B" AND "C"  
 DETAILS**

DATE: 06/30/05  
 DESIGNED BY: MDS

DRAWN BY: MDS  
 CHECKED BY: GAT