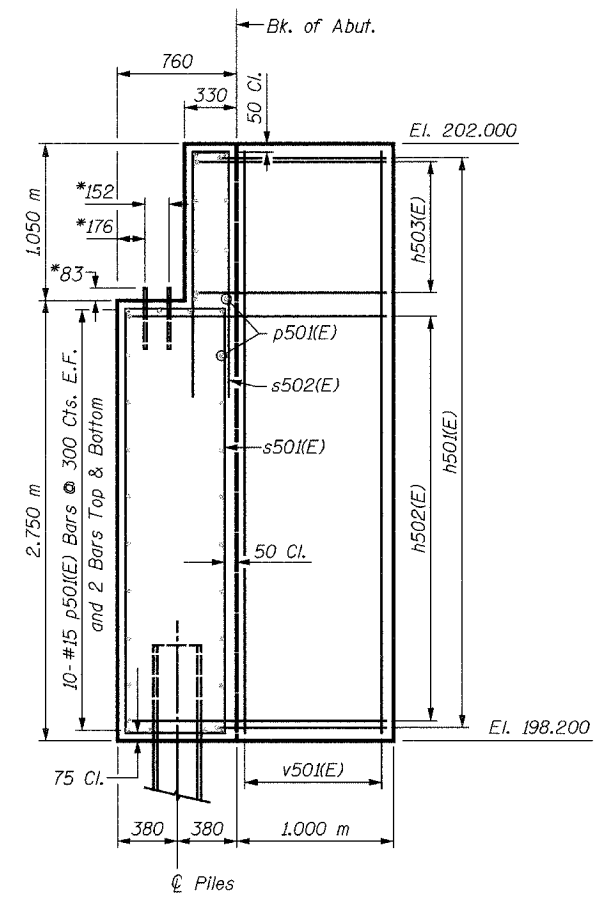
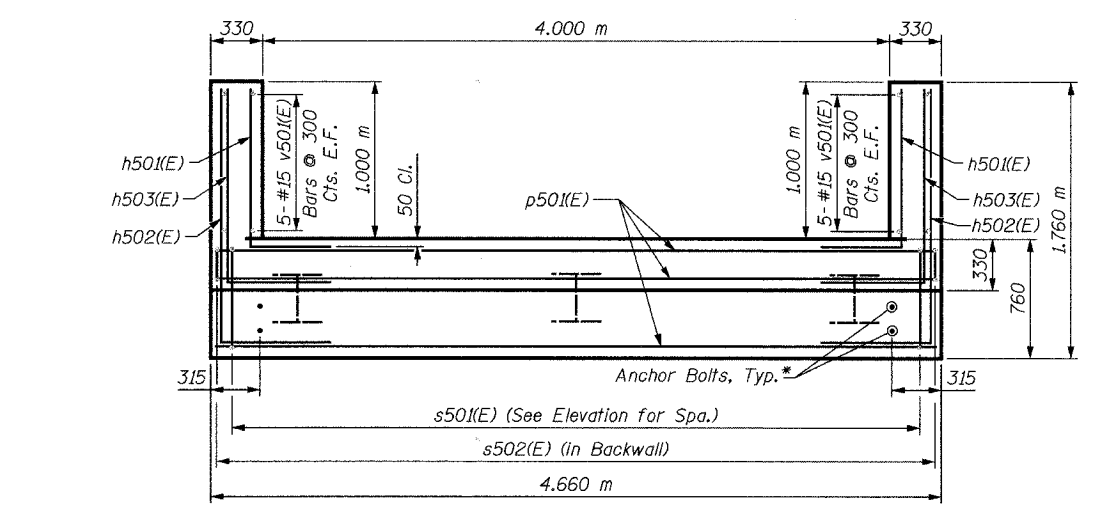


**ELEVATION**



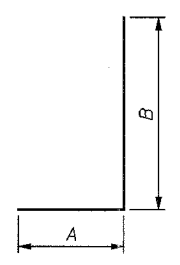
**SIDE VIEW**

\*Anchor bolt size and locations shall be checked against the Bridge Fabricator's requirements prior to setting them.

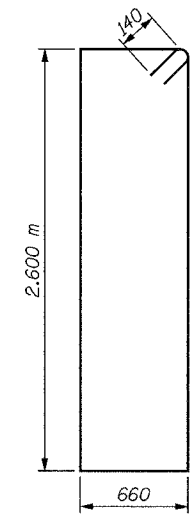


**PLAN**

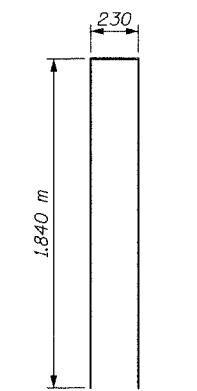
Bar	A	B
h50(E)	0.900 m	1.000 m
h502(E)	0.900 m	1.640 m
h503(E)	0.900 m	1.220 m



**BAR h50(E) TO h503(E)**



**BAR s50(E)**



**BAR s502(E)**

**BILL OF MATERIAL**

Bar	No.	Size	Length	Shape
h50(E)	28	#15	1.90 m	┌
h502(E)	20	#15	2.54 m	┌
h503(E)	8	#15	2.12 m	┌
p50(E)	32	#15	4.56 m	—
s50(E)	16	#15	6.84 m	□
s502(E)	16	#15	3.91 m	┌
v50(E)	20	#15	3.67 m	—
Concrete Structures			Cu. M	14.0
Reinforcement Bars, Epoxy Coated			kg	810
Furnishing Steel Piles HP310x94			Meter	51
Driving Steel Piles			Meter	51
Metal Shoes			Each	3
Structure Excavation			Cu. M	31

**LEGEND**

E.F. = Each Face

**MIN. BAR LAP**

#15 = 890

**PILE DATA:**

Type: HP310x94  
Capacity: Driven to Refusal  
Est. Length: 17 m  
No. Required: 3

**NOTES:**

- Space reinforcement in cap to miss anchor bolts.
- All edges shall have standard 20 mm chamfers except as noted.
- For Anchor Bolt Details, see Sheet S32.
- There shall be no splicing of longitudinal bars. Bars shall be ordered full length.
- Bars designated (E) shall be epoxy coated.

SHEET S30 of S33

REVISIONS		NAME	DATE

**URS** 1701 GOLF ROAD, SUITE 1000 TEL (847) 228-0707  
ROLLING MEADOWS, IL 60008 FAX (847) 228-1115

VILLAGE OF OAKBROOK  
**SALT CREEK GREENWAY TRAIL**  
PEDESTRIAN BRIDGE, STA. 23+508.08  
WEST ABUTMENT DETAILS

DATE: 06/30/05  
DESIGNED BY: MDS  
DRAWN BY: MDS  
CHECKED BY: GAT