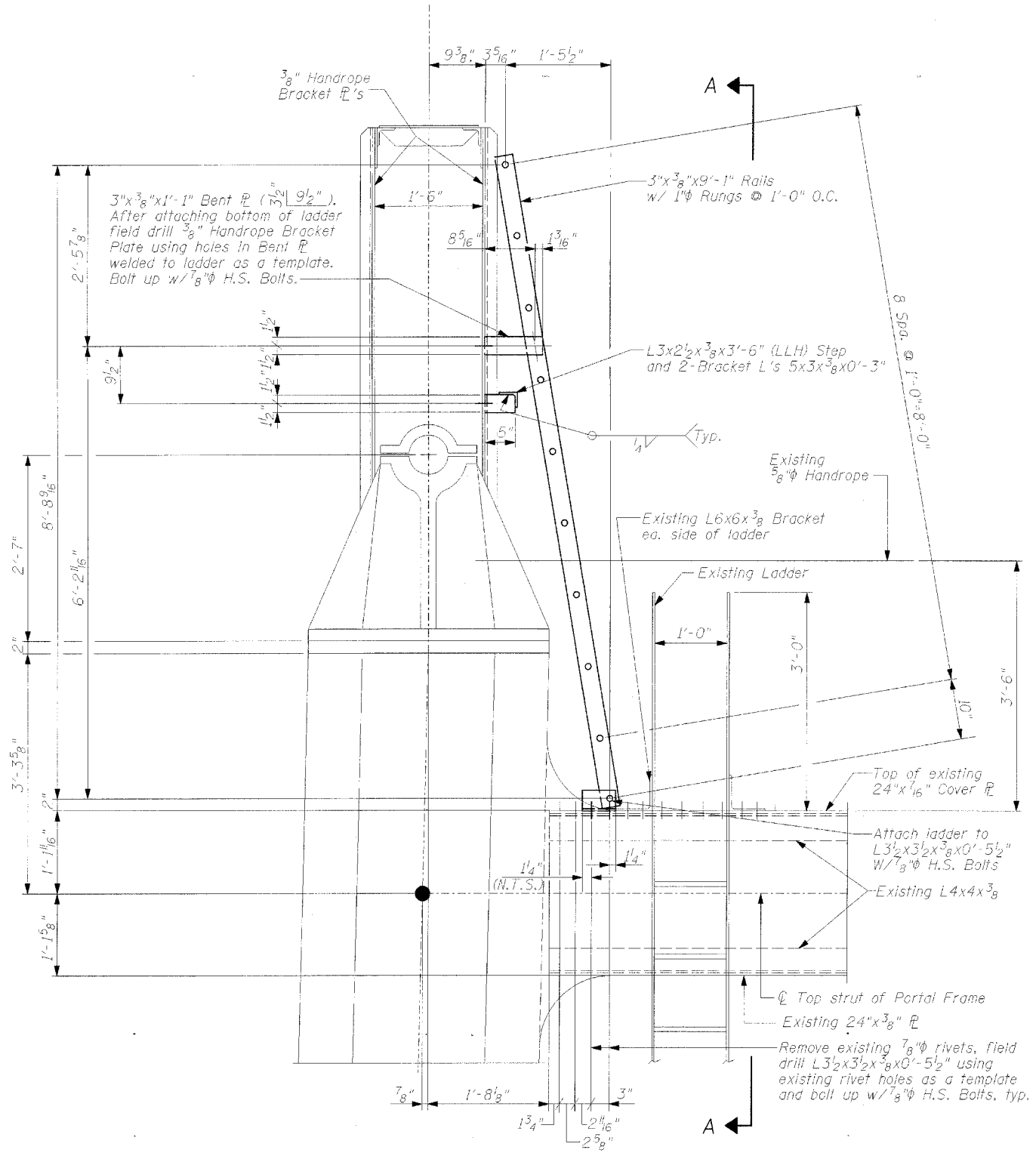
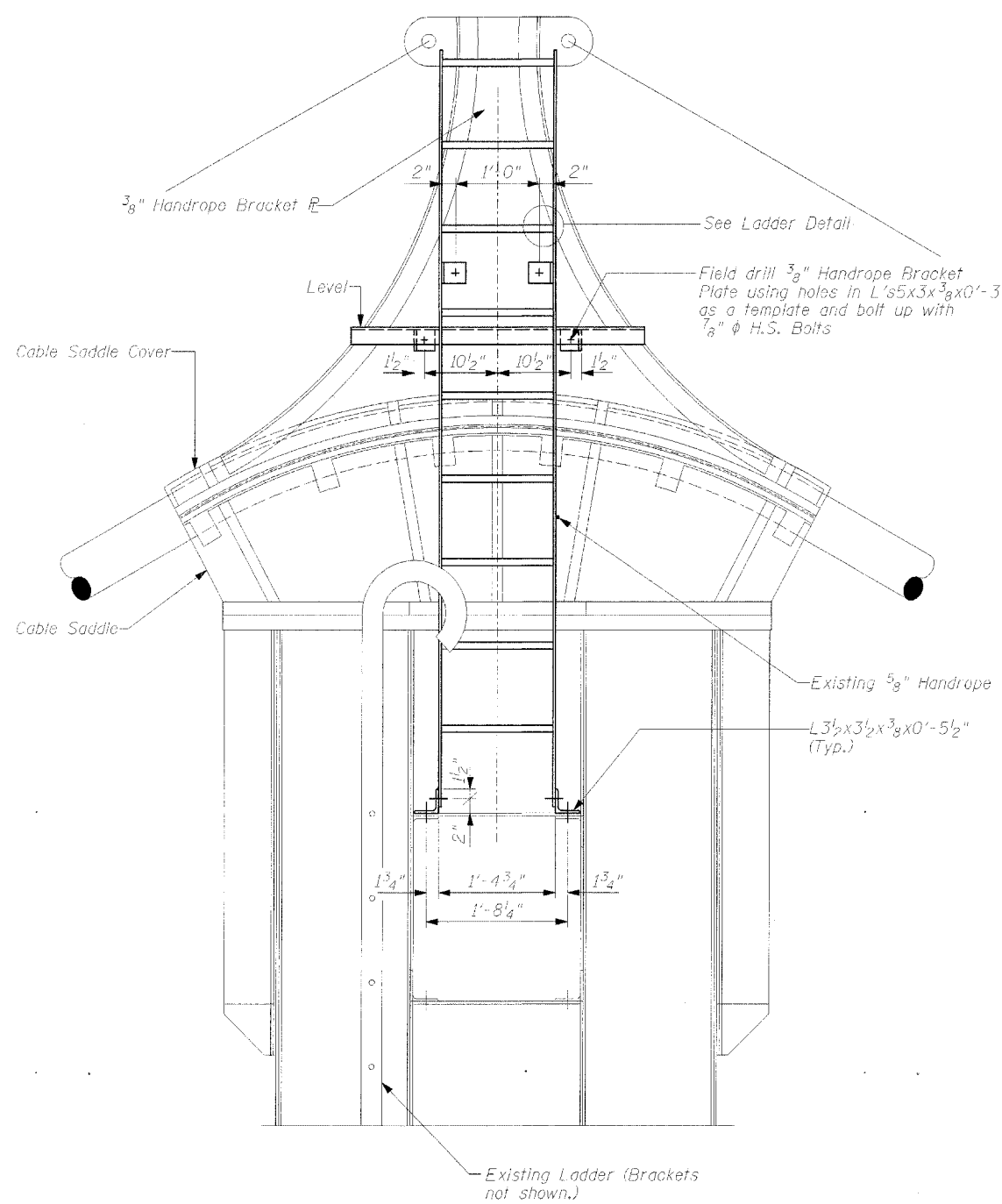


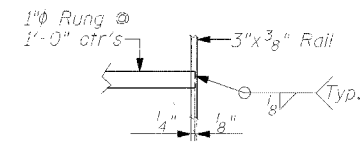
Contract 84841



LIGHT BRACKET DETAIL



SECTION A-A



LADDER DETAIL

NOTES

1. All material shall be galvanized after fabrication. See General Notes.
2. All rivets removed shall be replaced with new 7/8" H.S. Bolts. All costs associated with this work shall be included in the unit price bid for "Furnishing and Erecting Structural Steel".
3. Weight of Top Strut Ladders and Steps (643 lbs) is included in the estimated quantity for "Furnishing and Erecting Structural Steel".

4 Ladders and
4 Steps Required

TOP STRUT LADDER DETAILS

CLINTON GATEWAY BRIDGE
OVER MISSISSIPPI RIVER
F.A. RTE. 309 (U.S. 30)
SECTION (7B-1D) & 7BR
WHITESIDE COUNTY
STRUCTURE NUMBER 098-6003

CHAMPAIGN, ILLINOIS
CHICAGO, ILLINOIS
EVANSVILLE, INDIANA
INDIANAPOLIS, INDIANA
KENOSHA, WISCONSIN
SPRING GREEN, WISCONSIN

Clark Dietz

REVISIONS		DATE	DRAWING NUMBER
NAME			
			S-10

NOTE: DIMENSIONS DATA IS NOT TO BE OBTAINED BY SCALING ANY PORTION OF THIS DRAWING.
DESIGNED BY: MM PROJECT NO: 182289
DRAWN BY: MEW DATE: 2/25
CHECKED BY: MM
APPROVED BY: SCJ
ACTIVITY: DETAILS