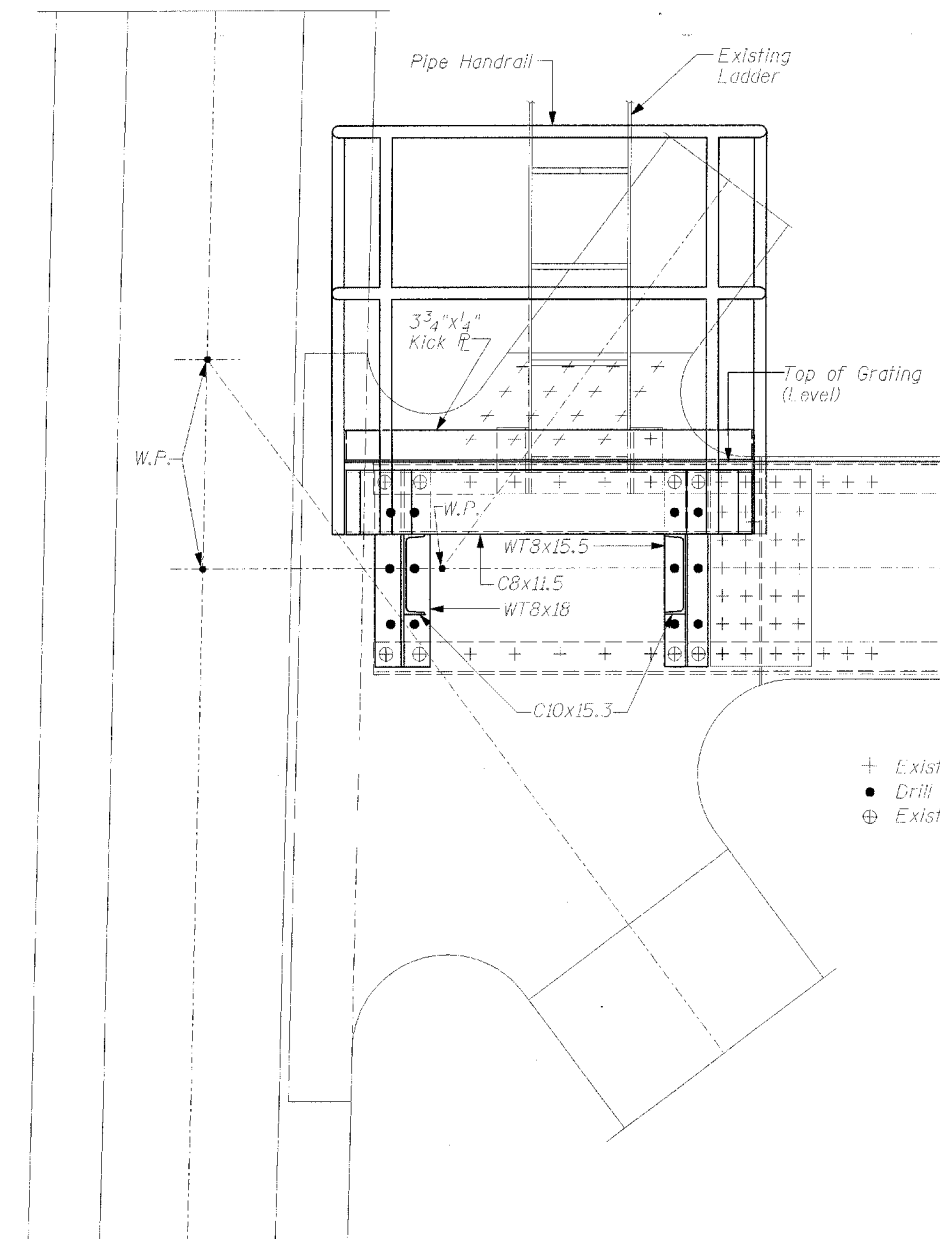
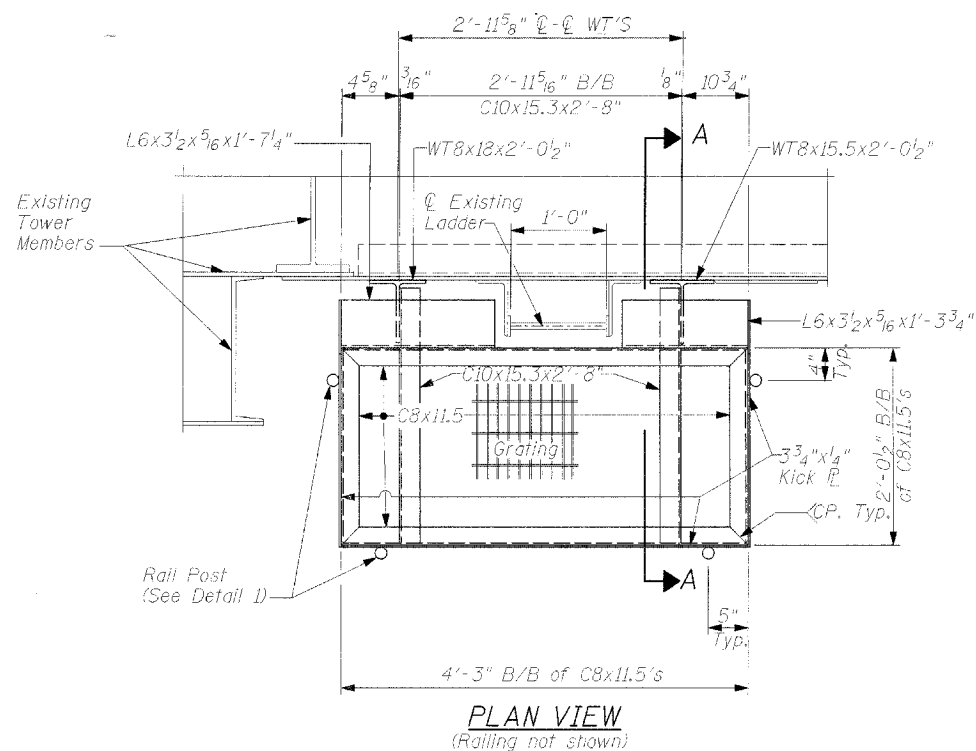


Contract 84841

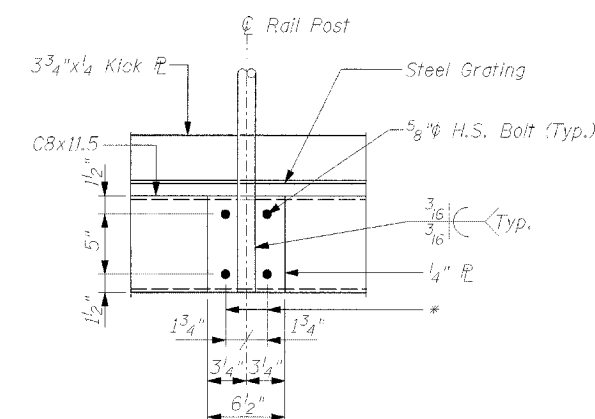


FRONT ELEVATION VIEW

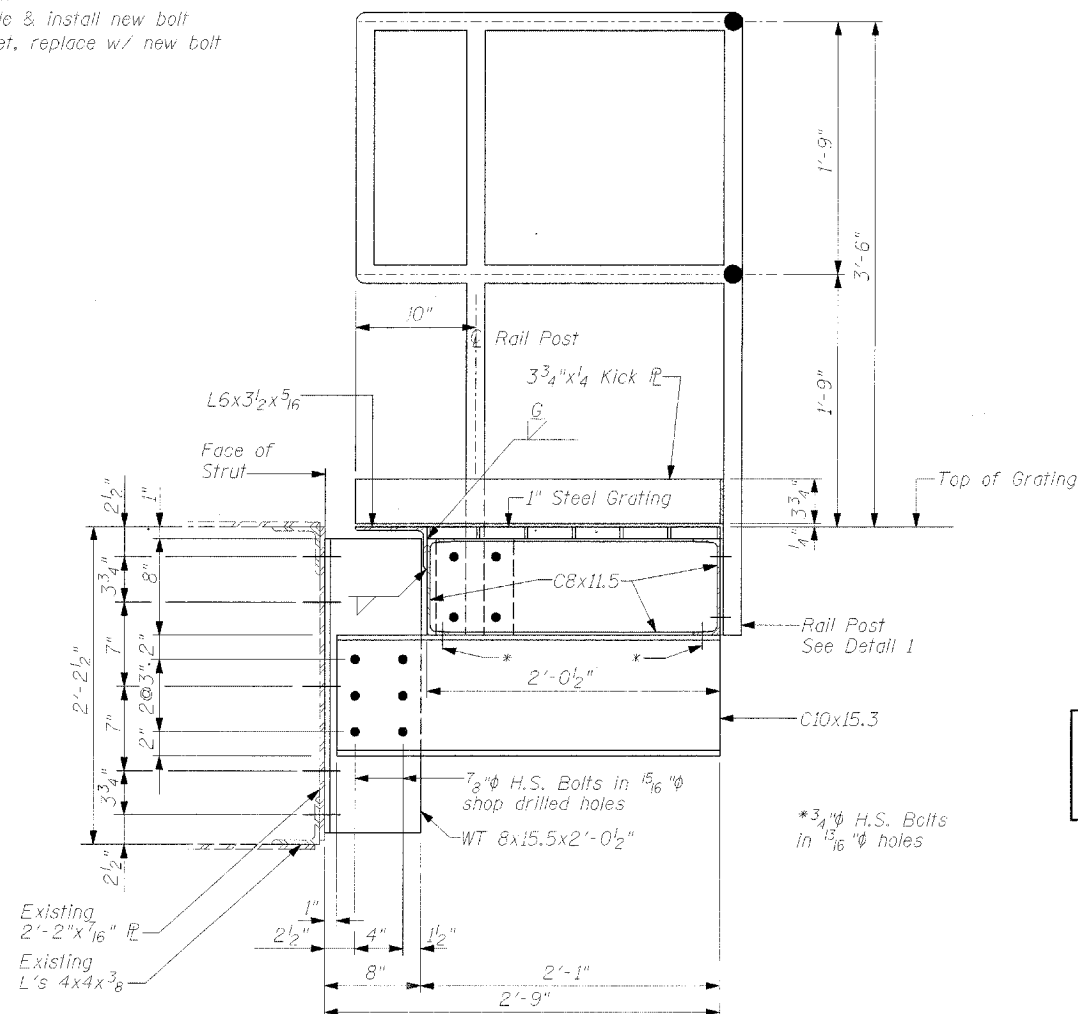
- + Existing Rivet
- Drill new hole & install new bolt
- ⊕ Existing Rivet, replace w/ new bolt



PLAN VIEW
(Railing not shown)



DETAIL 1
(Showing Rail Post Connection to Channel)



SECTION A-A

NOTES

1. Pipe handrail shall conform to A.S.T.M. A53, Grade B 1/2" Dia. Extra Strong Pipe. Weld pipe using standard fabrication practice and grind smooth.
2. Steel grating to be rectangular design, Type WB as manufactured by IKG Industries, a division of Harsco Corp. or an approved equal. Bearing bars shall be 1"x3/16" spaced at 1 1/2" centers. Cross bars shall be rectangular and spaced at 4" centers. All grating shall have banded ends, same size as bearing bars.
3. Grating shall be secured in place using manufacturers saddle clip. 4 minimum per grating panel.
4. All material shall be galvanized after fabrication. See General Notes.
5. Weight of Tower Top Strut landings (2,465 lbs. including 257 lbs. of grating, and 740 lbs. of railing) is included in the estimated quantity for "Furnishing and Erecting Structural Steel".
6. See Design Sheet S-11 for notes and additional Details.

4 Platforms Required
(2 as shown on approach side of Tower A, 2 on approach side of Tower B)

TOP STRUT LANDING DETAILS

CLINTON GATEWAY BRIDGE
OVER MISSISSIPPI RIVER
F.A. RTE. 309 (U.S. 30)
SECTION (7B-1D & 7BR)
WHITESIDE COUNTY
STRUCTURE NUMBER 098-6003



REVISIONS		DATE
NAME		

DESIGNED BY: PS	PROJECT NO.: 102289
DRAWN BY: MEW	DATE: 6/05
CHECKED BY: PS	
APPROVED BY: SCJ	
ACTIVITY: DETAILS	