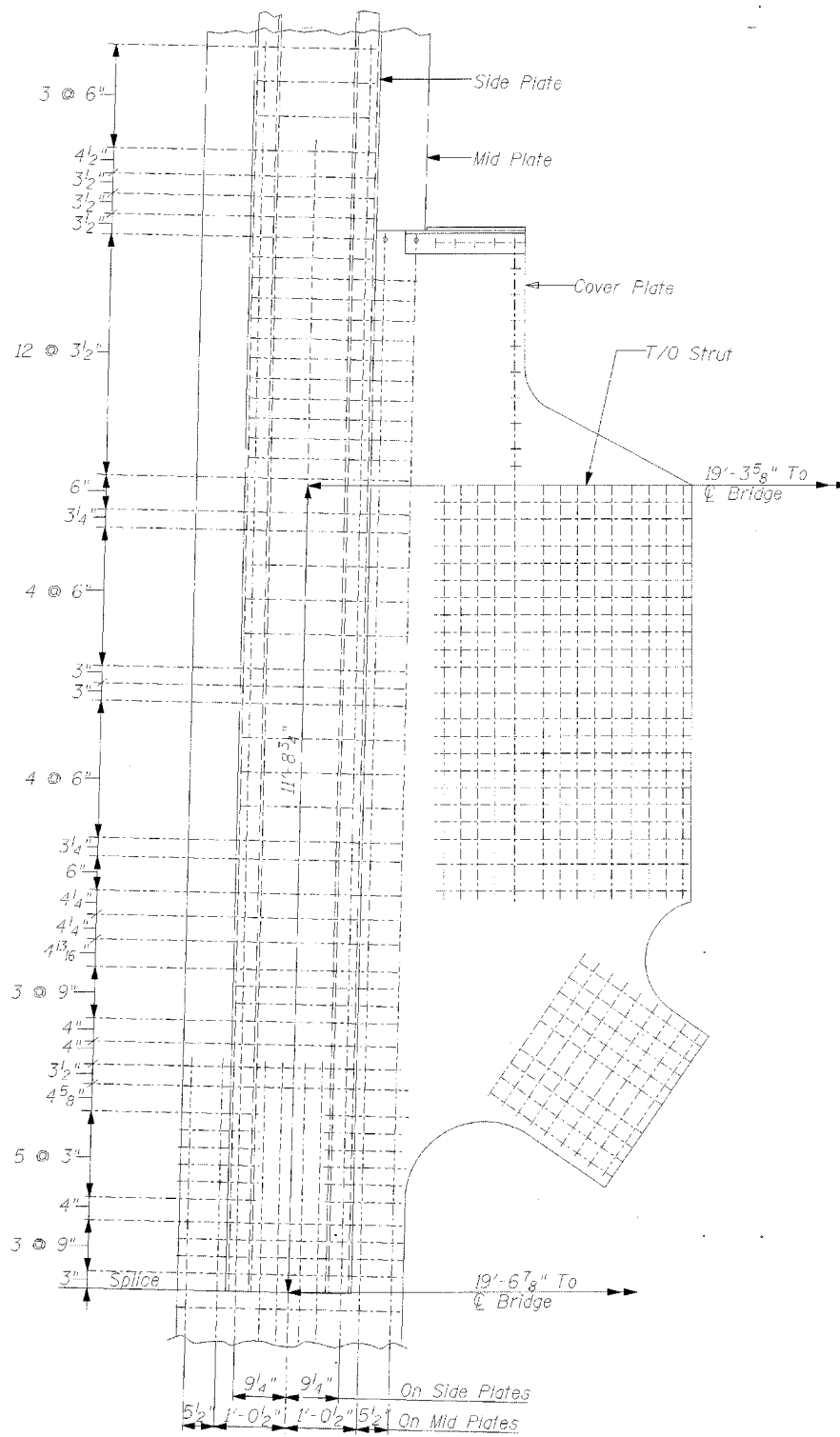
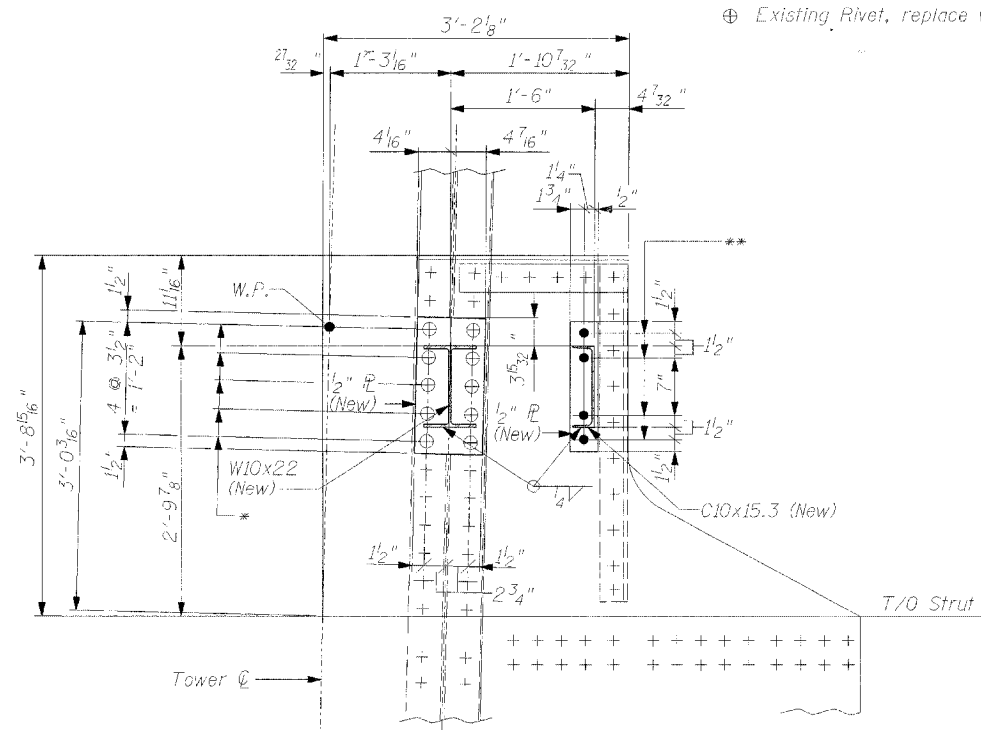


Contract 84841

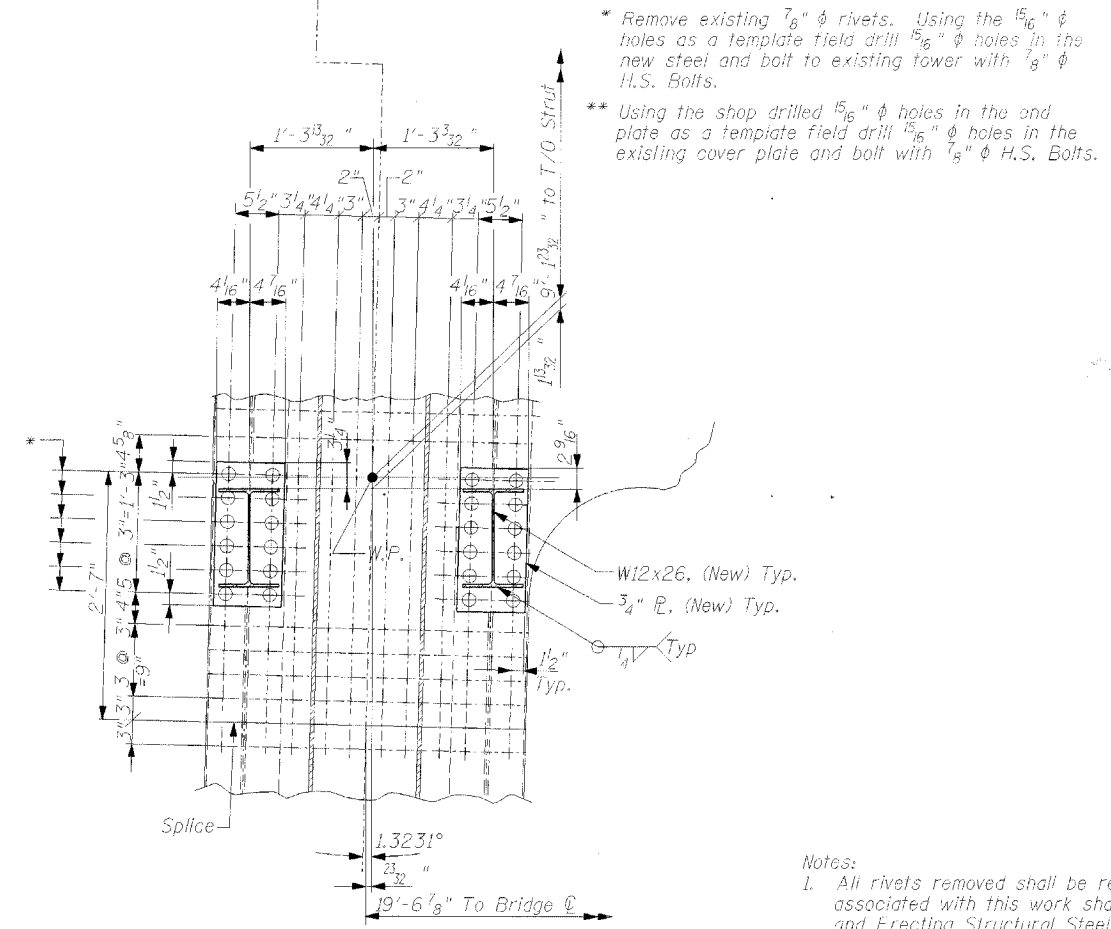
- + Existing Rivet
- Drill new hole & install new bolt
- ⊕ Existing Rivet, replace w/ new bolt



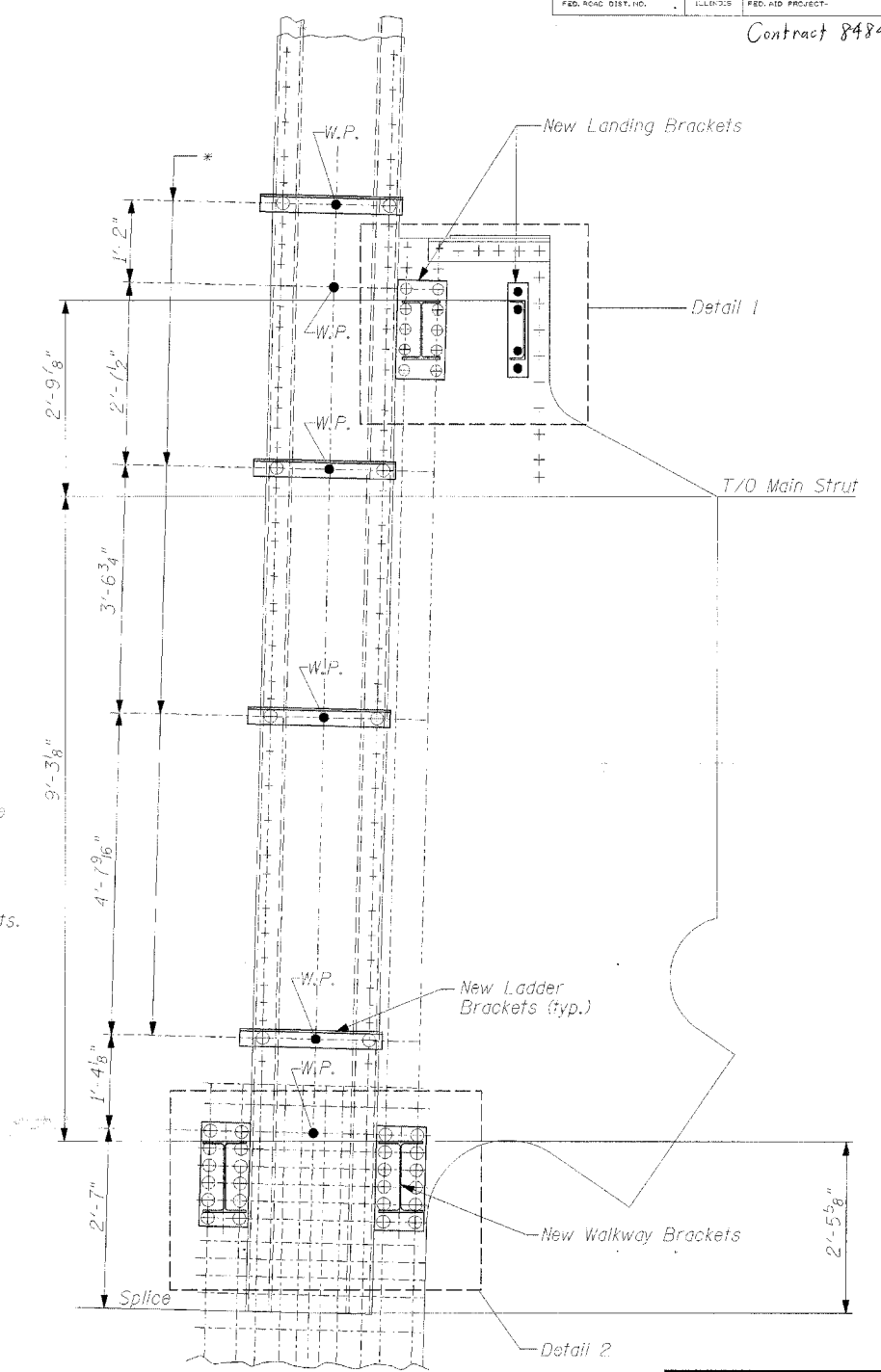
EXISTING MAIN STRUT SITUATION
(Showing location & spacing of the existing rivets)



DETAIL 1 - NEW MAIN STRUT LANDING BRACKETS



DETAIL 2 - NEW WALKWAY BRACKETS



FRONT ELEVATION VIEW
(Showing Brackets Attachments)

- Notes:
- All rivets removed shall be replaced with new 7/8" H.S. Bolts. All costs associated with this work shall be included in unit price bid for "Furnishing and Erecting Structural Steel".
 - See Design Sheet S-14 for notes.
 - See Design Sheet S-14 and S-15 for Walkway Details.
 - See Design Sheet S-16 for Landing and Ladder Details.

MAIN STRUT BRACKETS ELEVATION

CLINTON GATEWAY BRIDGE
OVER MISSISSIPPI RIVER
F.A. RTE. 309 (U.S. 30)
SECTION (7B-ID & 7BR)
WHITESIDE COUNTY
STRUCTURE NUMBER 098-6003

CHAMPAIGN, ILLINOIS
CHICAGO, ILLINOIS
EVANSVILLE, INDIANA
INDIANAPOLIS, INDIANA
KENOSHA, WISCONSIN
SPRING GREEN, WISCONSIN

Clark Dietz

REVISIONS		DATE
NAME		

DESIGNED BY: PS	PROJECT NO: 102289
DRAWN BY: MEW	DATE: 6/05
CHECKED BY: PS	
APPROVED BY: SCJ	
ACTIVITY: DETAILS	