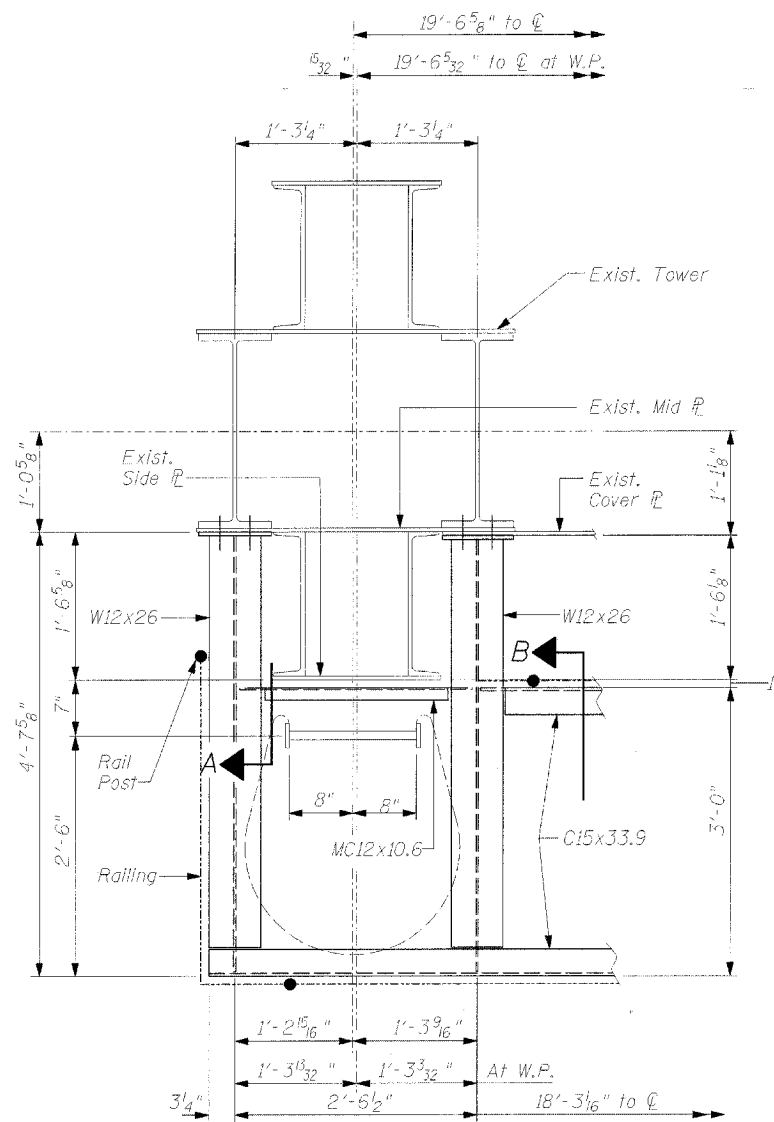


ROUTE NO.	SECTION	COUNTY	SHEETS	SHEET NO.
F.A. 309 (U.S. 30) & 7BR	(7B-1)D	WHITESIDE, IL CLINTON, IA.	20	20
FED. ROAD DIST. NO.	LAINDER	FED. AID PROJECT		

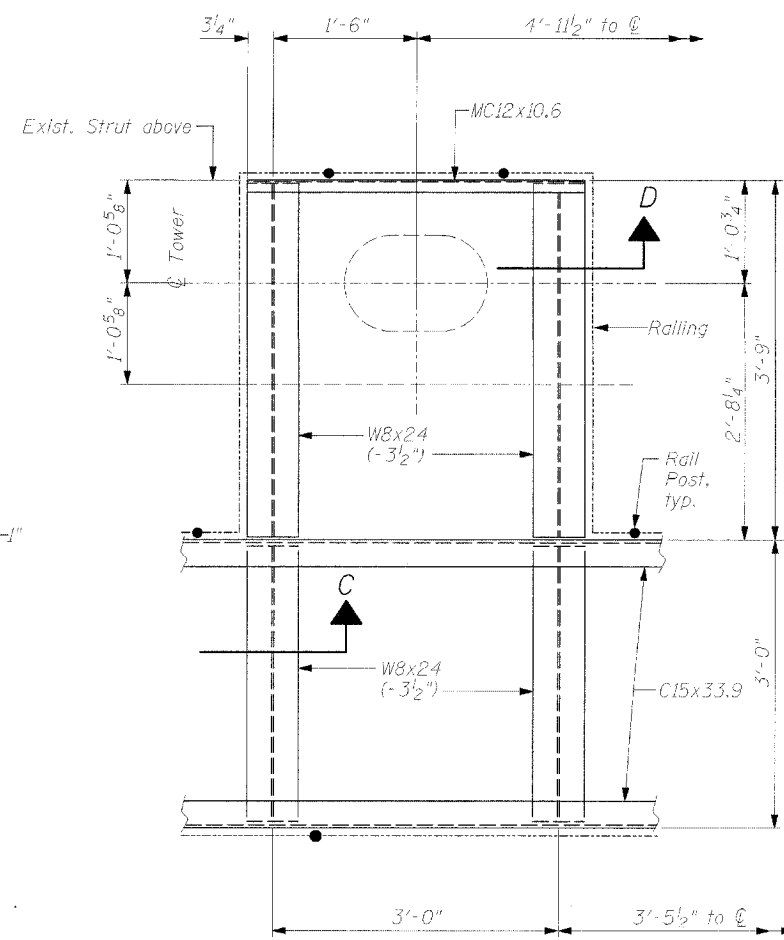
SHEET NO. 20
SHEETS

NOTE:
1. See Design Sheets S-13 and S-14 for notes and additional details.

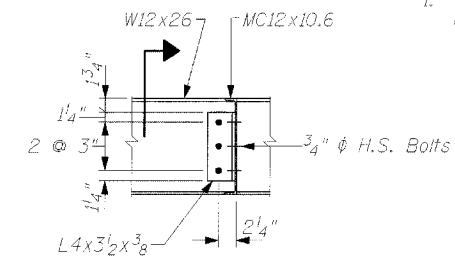
Contract 84841



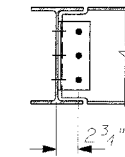
DETAIL 3



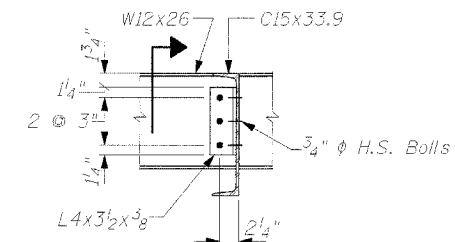
DETAIL 4



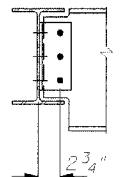
SECTION A



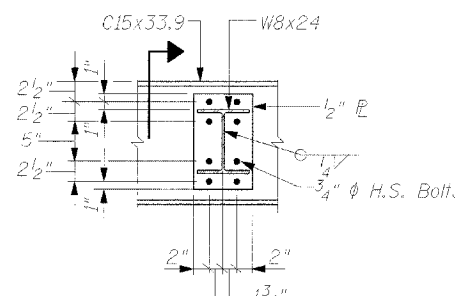
SECTION



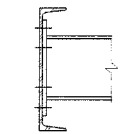
SECTION B



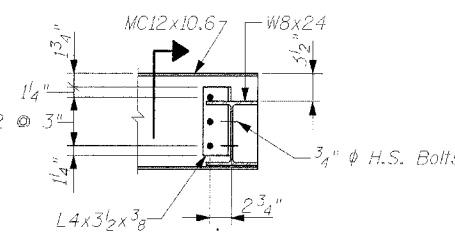
SECTION



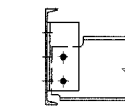
SECTION C



SECTION



SECTION D



SECTION

WALKWAY CONNECTION DETAILS

WALKWAY DETAILS
CLINTON GATEWAY BRIDGE
OVER MISSISSIPPI RIVER
F.A. RTE. 309 (U.S. 30)
SECTION (7B-1)D & 7BR
WHITESIDE COUNTY
STRUCTURE NUMBER 098-6003

CHAMPAIGN, ILLINOIS
CHICAGO, ILLINOIS
EVANSVILLE, INDIANA
INDIANAPOLIS, INDIANA
KENSHA, WISCONSIN
SPRING GREEN, WISCONSIN



REVISIONS	
NAME	DATE

DESIGNED BY: PS	PROJECT NO: 182289
DRAWN BY: MEW	DATE: 6/19/84
CHECKED BY: PS	
APPROVED BY: SCJ	
ACTIVITY	INITIALS

NOTES: DIMENSIONAL DATA IS NOT TO BE OBTAINED BY SCALING ANY PORTION OF THIS DRAWING.
DRAWING NUMBER
S-15