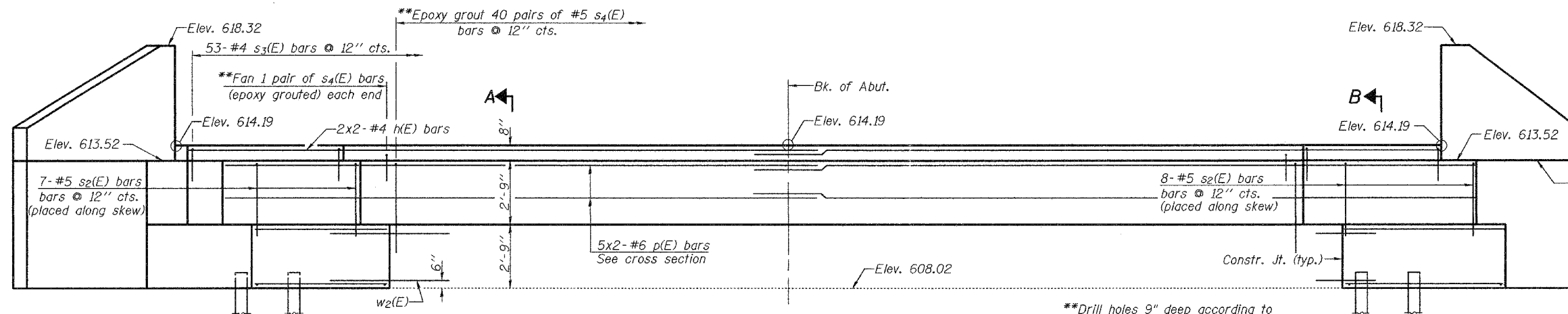


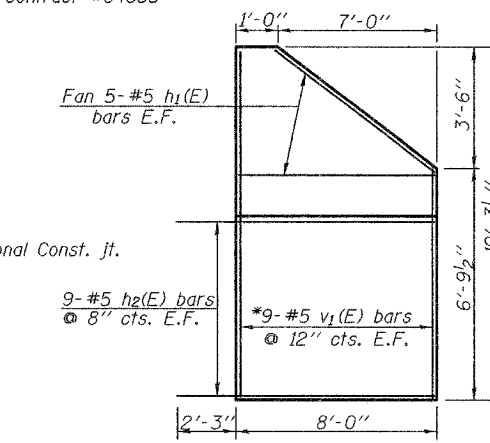
STATE OF ILLINOIS
DEPARTMENT OF TRANSPORTATION

ROUTE NO.	SECTION	COUNTY	STATION	SHEET NO.	SHEET NO. 14
F.A.P. 309	TVBR	WHITESIDE	14b	74	22 SHEETS
FED. ROAD DIST. NO. 7	ILLINOIS FED. AID PROJECT				

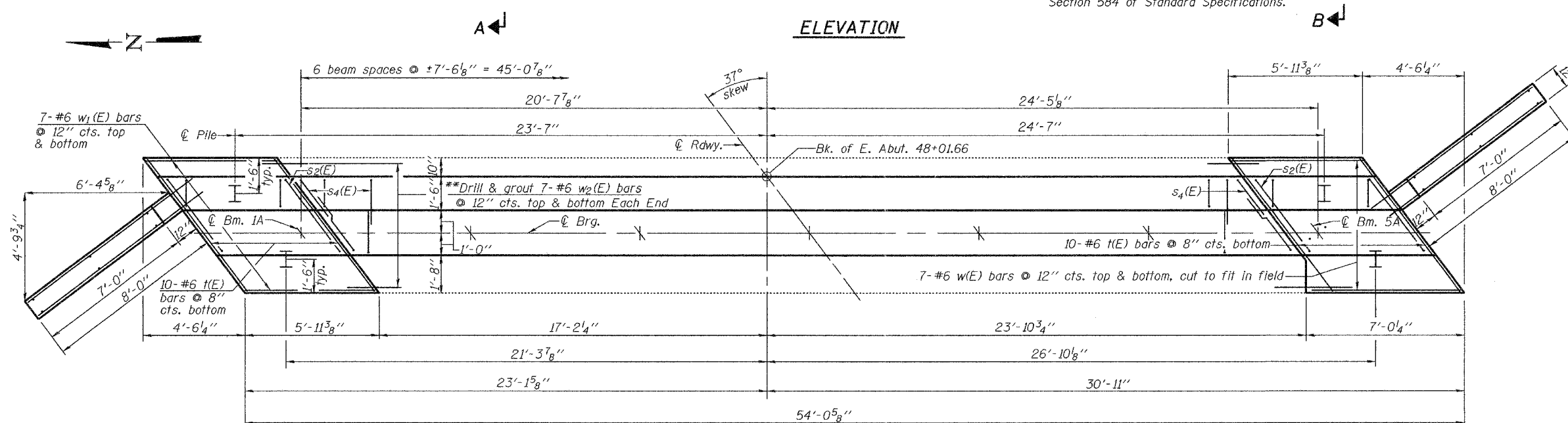
Contract #84883



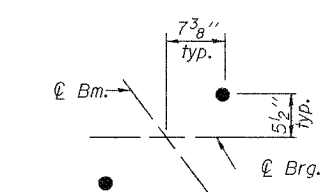
ELEVATION



WINGWALL



PLAN



ANCHOR BOLT OFFSET

BILL OF MATERIAL

Bar	No.	Size	Length	Shape
h(E)	4	#4	28'-0"	—
h ₁ (E)	20	#4	7'-9"	—
h ₂ (E)	36	#5	10'-1"	—
p(E)	10	#6	28'-4"	—
s ₂ (E)	14	#5	12'-2"	□
s ₃ (E)	53	#4	4'-6"	□
s ₄ (E)	84	#5	6'-6"	□
h(E)	20	#6	7'-2"	—
v ₁ (E)	18	#5	16'-6"	—
w(E)	14	#6	6'-9"	—
w ₁ (E)	14	#6	5'-8"	—
w ₂ (E)	28	#6	3'-0"	—
Reinforcement Bars, Epoxy Coated				Pound 2800
Concrete Structures				Cu. Yds. 33.8
Structure Excavation				Cu. Yds. 131
Furnishing Steel Piles HP 12x53				Foot 164

Reinforcement bars designated (E) shall be epoxy coated.

EAST ABUTMENT
F.A.P. RT. 309 SEC. 7VBR
WHITESIDE COUNTY
STATION 47+18.53
STRUCTURE No. 098-6001

PILE DATA

Type: Steel HP12x53
Capacity: 30 Tons Driven to 45 Ton
Est. Length: 41'
No. Req'd.: 4

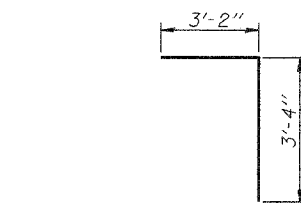
MIN. BAR LAPS

#4 bar = 1'-8"
#6 bar = 2'-7"

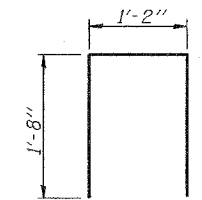
Notes: Space reinforcement in cap to miss anchor bolts.
All edges shall have standard $\frac{3}{4}$ " chamfers except as noted.
Pour steps monolithically with cap.
For anchor bolt installation details see sheet 18 of 22.
Bars indicate thus 3x2-#5 etc. indicates 3 lines of bars with 2 lengths per line.

DESIGNED	Patrick M. Petrone
CHECKED	Stephen M. Ryan
DRAWN	R. Sommer
CHECKED	P.M.P./S.M.R.

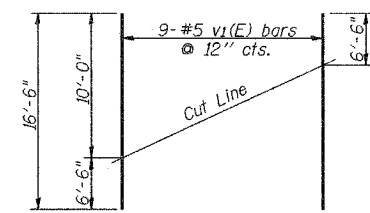
October 11, 2005
EXAMINED *Thomas J. Domagalaki*
ENGINEER OF BRIDGE DESIGN
PASSED *Ralph E. Anderson*
ENGINEER OF BRIDGES AND STRUCTURES



BAR s₄(E)

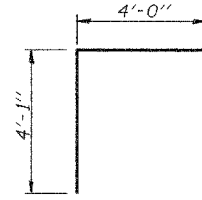


BAR s₃(E)

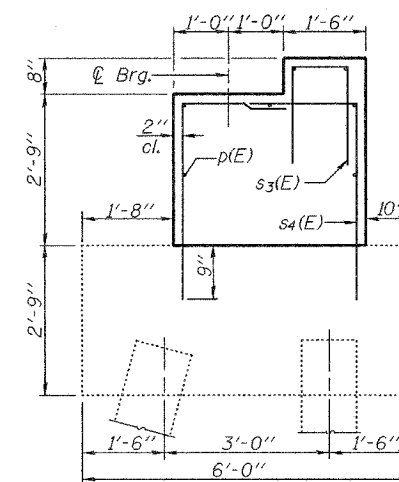


FIELD CUTTING DIAGRAM

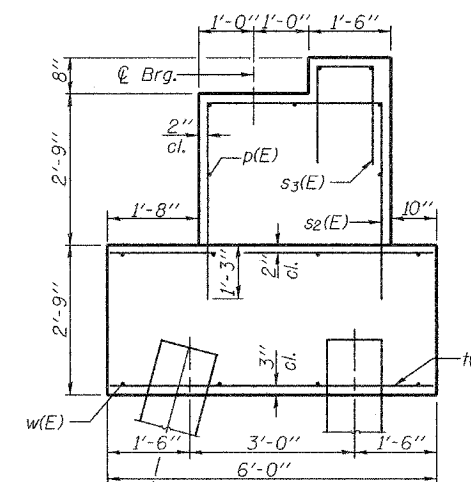
*Order w(E) full length. Cut as shown and use remainder of bars in opposite face.



BAR s₂(E)



SECTION A-A



SECTION B-B