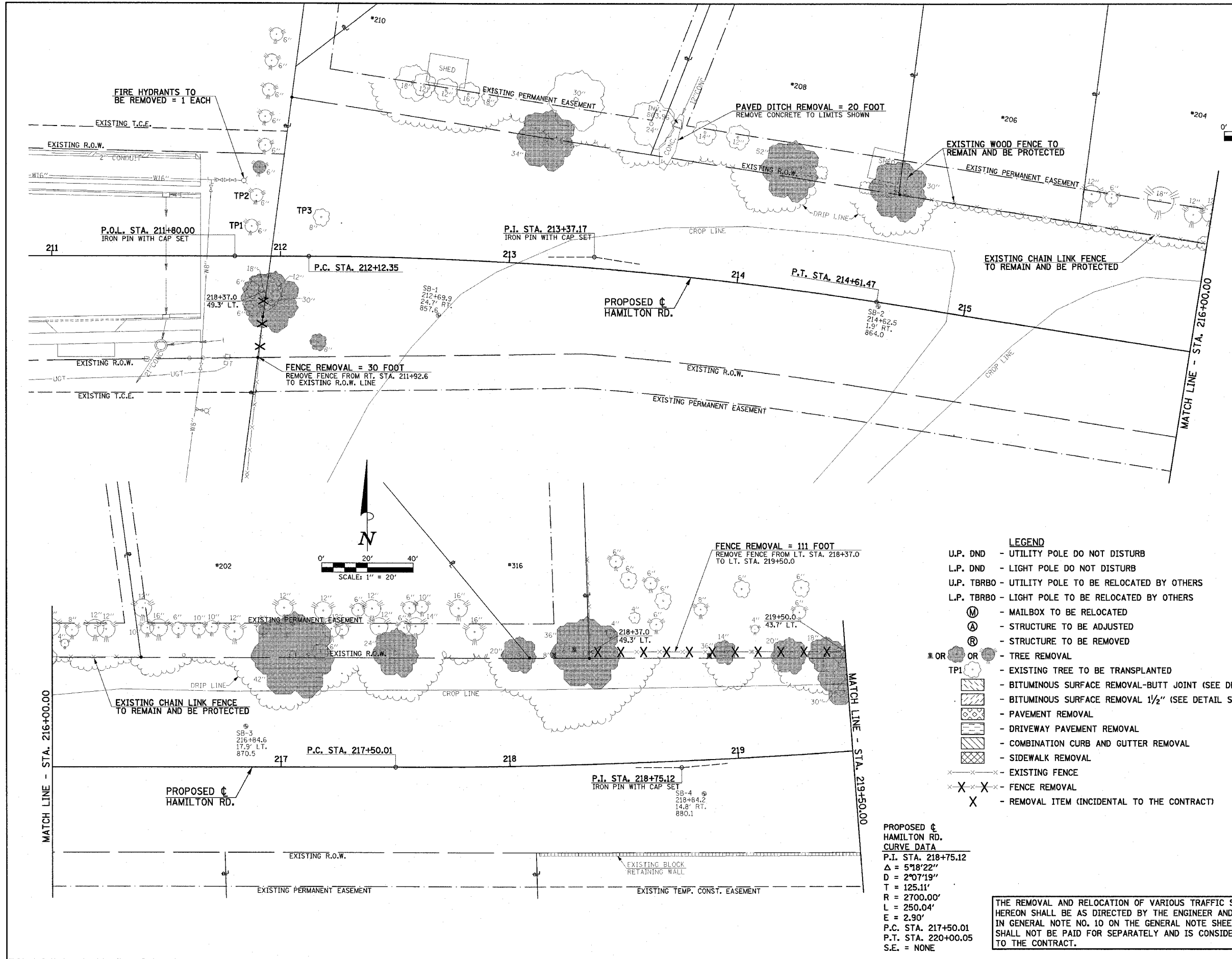


PROPOSED ϕ HAMILTON RD. CURVE DATA
P.I. STA. 213+37.17
 $\Delta = 9^{\circ}04'32''$
D = 3'38'35"
T = 124.82'
R = 1572.74'
L = 249.12'
E = 4.95'
P.C. STA. 212+12.35
P.T. STA. 214+61.47
S.E. = NONE

STATION	OFFSET	UNIT
211+87.1	14.6' RT.	6
211+87.6	23.0' RT.	6
211+90.9	38.8' LT.	6
211+95.8	16.6' RT.	12
212+16.5	37.7' RT.	8
218+20.6	48.5' LT.	8 STUMP
218+29.6	50.6' LT.	8 STUMP
218+96.3	46.8' LT.	14
TOTAL		68

STATION	OFFSET	UNIT
211+92.8	15.5' RT.	18
211+95.4	19.6' RT.	30
213+12.6	54.6' LT.	34
214+16.5	51.6' LT.	52
214+63.0	49.8' LT.	30
217+05.1	49.2' LT.	42
217+50.0	50.2' LT.	24
218+04.9	48.9' LT.	20
218+34.7	49.0' LT.	36
218+89.6	45.5' LT.	36 STUMP
219+24.8	43.5' LT.	20
219+41.1	42.9' LT.	18
219+49.9	32.5' LT.	30
TOTAL		390

ABBREV.	EXISTING STATION	EXISTING OFFSET	EACH
TP1	211+87.4	13.2' LT.	1
TP2	211+89.5	26.6' LT.	1
TP3	212+17.8	17.1' LT.	1
TOTAL			3



- LEGEND**
- U.P. DND - UTILITY POLE DO NOT DISTURB
 - L.P. DND - LIGHT POLE DO NOT DISTURB
 - U.P. TBRBO - UTILITY POLE TO BE RELOCATED BY OTHERS
 - L.P. TBRBO - LIGHT POLE TO BE RELOCATED BY OTHERS
 - (M) - MAILBOX TO BE RELOCATED
 - (A) - STRUCTURE TO BE ADJUSTED
 - (R) - STRUCTURE TO BE REMOVED
 - (OR) - TREE REMOVAL
 - TP1 - EXISTING TREE TO BE TRANSPLANTED
 - (Hatched) - BITUMINOUS SURFACE REMOVAL-BUTT JOINT (SEE DETAIL SHEET)
 - (Hatched) - BITUMINOUS SURFACE REMOVAL 1/2" (SEE DETAIL SHEET)
 - (Hatched) - PAVEMENT REMOVAL
 - (Hatched) - DRIVEWAY PAVEMENT REMOVAL
 - (Hatched) - COMBINATION CURB AND GUTTER REMOVAL
 - (Hatched) - SIDEWALK REMOVAL
 - - - - - EXISTING FENCE
 - X-X- FENCE REMOVAL
 - X - REMOVAL ITEM (INCIDENTAL TO THE CONTRACT)

PROPOSED ϕ HAMILTON RD. CURVE DATA
P.I. STA. 218+75.12
 $\Delta = 5^{\circ}18'22''$
D = 2'07'19"
T = 125.11'
R = 2700.00'
L = 250.04'
E = 2.90'
P.C. STA. 217+50.01
P.T. STA. 220+00.05
S.E. = NONE

THE REMOVAL AND RELOCATION OF VARIOUS TRAFFIC SIGNS NOTED HEREON SHALL BE AS DIRECTED BY THE ENGINEER AND AS SPECIFIED IN GENERAL NOTE NO. 10 ON THE GENERAL NOTE SHEET. THIS WORK SHALL NOT BE PAID FOR SEPARATELY AND IS CONSIDERED INCIDENTAL TO THE CONTRACT.

FOR LOCATIONS OF TREES TO BE TRANSPLANTED SEE THE TREE PLANTING PLAN SHEETS.

FOR PROPOSED CONSTRUCTION IN THIS AREA SEE PLAN AND PROFILE SHEET NO'S. 34 & 35.

SEE PLAN AND PROFILE SHEETS FOR STORM SEWER REMOVAL AND STRUCTURE REMOVAL AND ADJUSTMENT SCHEDULES.

EXISTING PAVEMENTS, CURBS AND GUTTERS, AND SIDEWALKS IN WHICH THE TOP SURFACE IS TO BE JOINED TO THE PROPOSED WORK SHALL BE SO JOINED THROUGH SAW CUT JUNCTURES.

ILLINOIS DEPARTMENT OF TRANSPORTATION
REMOVALS/RELOCATIONS PLAN

DATE : 3-05
DRAWN BY : J.L.B.
CHECKED BY : R.L.H.

P:\B11091\GEOPAK\20FILES\DEMOLDGN