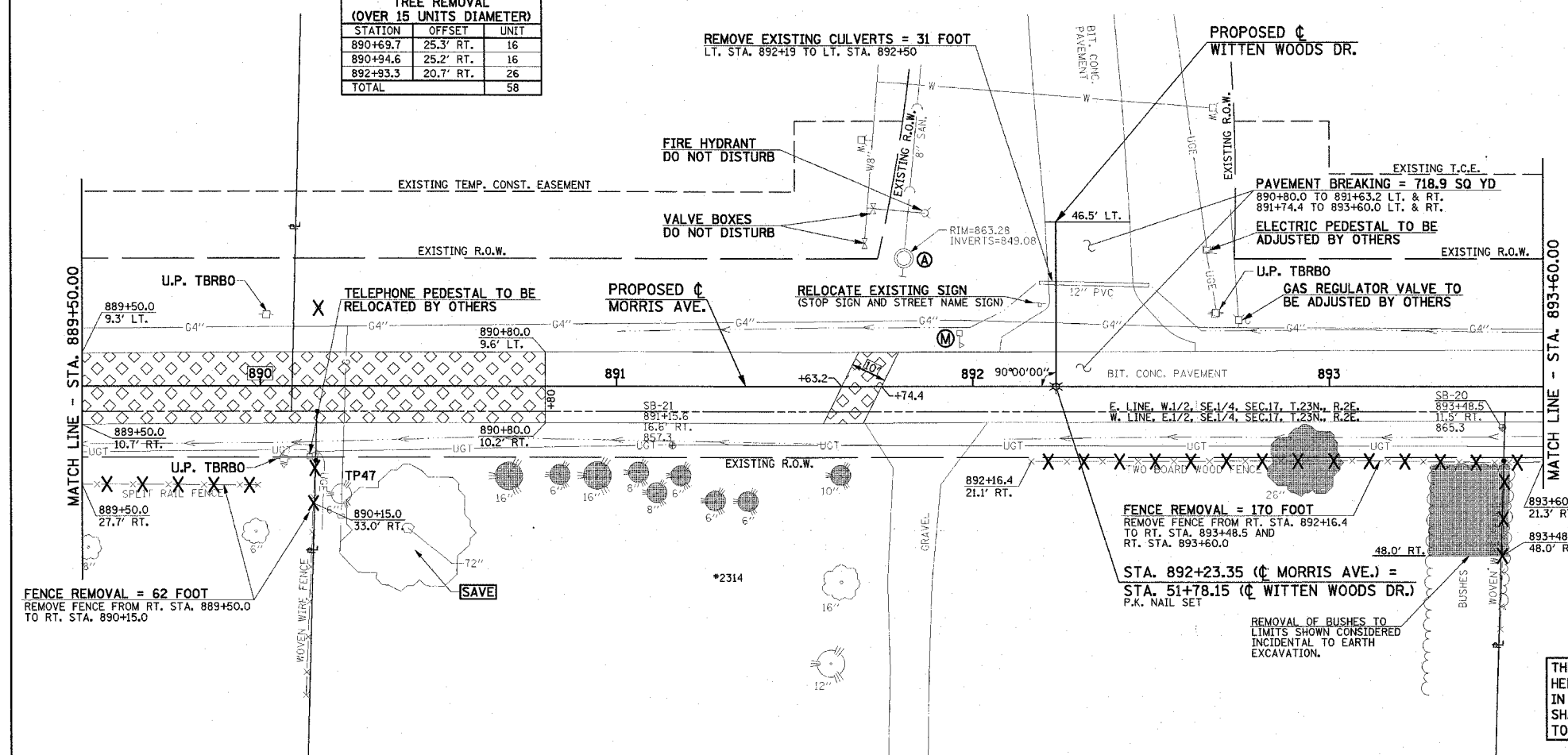


| ABBREV. | EXISTING STATION | EXISTING OFFSET | EACH |
|---------|------------------|-----------------|------|
| TP47 | 890+22.7 | 30.4' RT. | 1 |
| TOTAL | | | 1 |

| STATION | OFFSET | UNIT |
|----------|-----------|------|
| 890+84.1 | 24.9' RT. | 6 |
| 891+06.1 | 24.2' RT. | 8 |
| 891+11.3 | 29.9' RT. | 8 |
| 891+18.0 | 25.2' RT. | 6 |
| 891+27.7 | 32.3' RT. | 6 |
| 891+36.9 | 32.4' RT. | 6 |
| 891+62.9 | 25.0' RT. | 10 |
| TOTAL | | 50 |

| LOCATION | BIT SURF REM BUTT JT (SQ YD) | PAVEMENT REM (SQ YD) |
|--------------------------------|------------------------------|----------------------|
| 887+50.0 TO 887+75.0 LT. & RT. | 56.1 | |
| 888+39.0 TO 889+50.0 LT. & RT. | | 246.4 |
| 889+50.0 TO 890+80.0 LT. & RT. | | 287.5 |
| 891+63.2 TO 891+74.4 LT. & RT. | | 24.8 |
| TOTAL | 56.1 | 558.7 |

| STATION | OFFSET | UNIT |
|----------|-----------|------|
| 890+69.7 | 25.3' RT. | 16 |
| 890+94.6 | 25.2' RT. | 16 |
| 892+93.3 | 20.7' RT. | 26 |
| TOTAL | | 58 |



FOR LOCATIONS OF TREES TO BE TRANSPLANTED SEE THE TREE PLANTING PLAN SHEETS.

FOR PROPOSED CONSTRUCTION IN THIS AREA SEE PLAN AND PROFILE SHEET NOS. 41 & 42.

MAILBOXES SHALL BE RELOCATED AS DIRECTED BY THE ENGINEER IN ACCORDANCE WITH ARTICLE 107.20 OF THE STANDARD SPECIFICATIONS.

SEE PLAN AND PROFILE SHEETS FOR STORM SEWER REMOVAL AND STRUCTURE REMOVAL AND ADJUSTMENT SCHEDULES.

EXISTING PAVEMENTS, CURBS AND GUTTERS, AND SIDEWALKS IN WHICH THE TOP SURFACE IS TO BE JOINED TO THE PROPOSED WORK SHALL BE SO JOINED THROUGH SAW CUT JUNCTURES.

- LEGEND**
- U.P. DND - UTILITY POLE DO NOT DISTURB
 - L.P. DND - LIGHT POLE DO NOT DISTURB
 - U.P. TBRBO - UTILITY POLE TO BE RELOCATED BY OTHERS
 - L.P. TBRBO - LIGHT POLE TO BE RELOCATED BY OTHERS
 - (M) - MAILBOX TO BE RELOCATED
 - (A) - STRUCTURE TO BE ADJUSTED
 - (R) - STRUCTURE TO BE REMOVED
 - OR - TREE REMOVAL
 - TP1 - EXISTING TREE TO BE TRANSPLANTED
 - (Hatched) - BITUMINOUS SURFACE REMOVAL-BUTT JOINT (SEE DETAIL SHEET)
 - (Diagonal Hatched) - BITUMINOUS SURFACE REMOVAL 1/2" (SEE DETAIL SHEET)
 - (Cross-hatched) - PAVEMENT REMOVAL
 - (Dotted) - DRIVEWAY PAVEMENT REMOVAL
 - (Horizontal Hatched) - COMBINATION CURB AND GUTTER REMOVAL
 - (Vertical Hatched) - SIDEWALK REMOVAL
 - (X-X-X) - EXISTING FENCE
 - (X) - FENCE REMOVAL
 - (X) - REMOVAL ITEM (INCIDENTAL TO THE CONTRACT)

THE REMOVAL AND RELOCATION OF VARIOUS TRAFFIC SIGNS NOTED HEREON SHALL BE AS DIRECTED BY THE ENGINEER AND AS SPECIFIED IN GENERAL NOTE NO. 10 ON THE GENERAL NOTE SHEET. THIS WORK SHALL NOT BE PAID FOR SEPARATELY AND IS CONSIDERED INCIDENTAL TO THE CONTRACT.

ILLINOIS DEPARTMENT OF TRANSPORTATION

REMOVALS/RELOCATIONS PLAN

DATE : 3-05
DRAWN BY : J.L.B.
CHECKED BY : R.L.H.

SCALE : 1"=20'