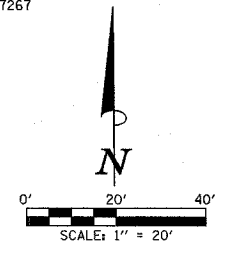
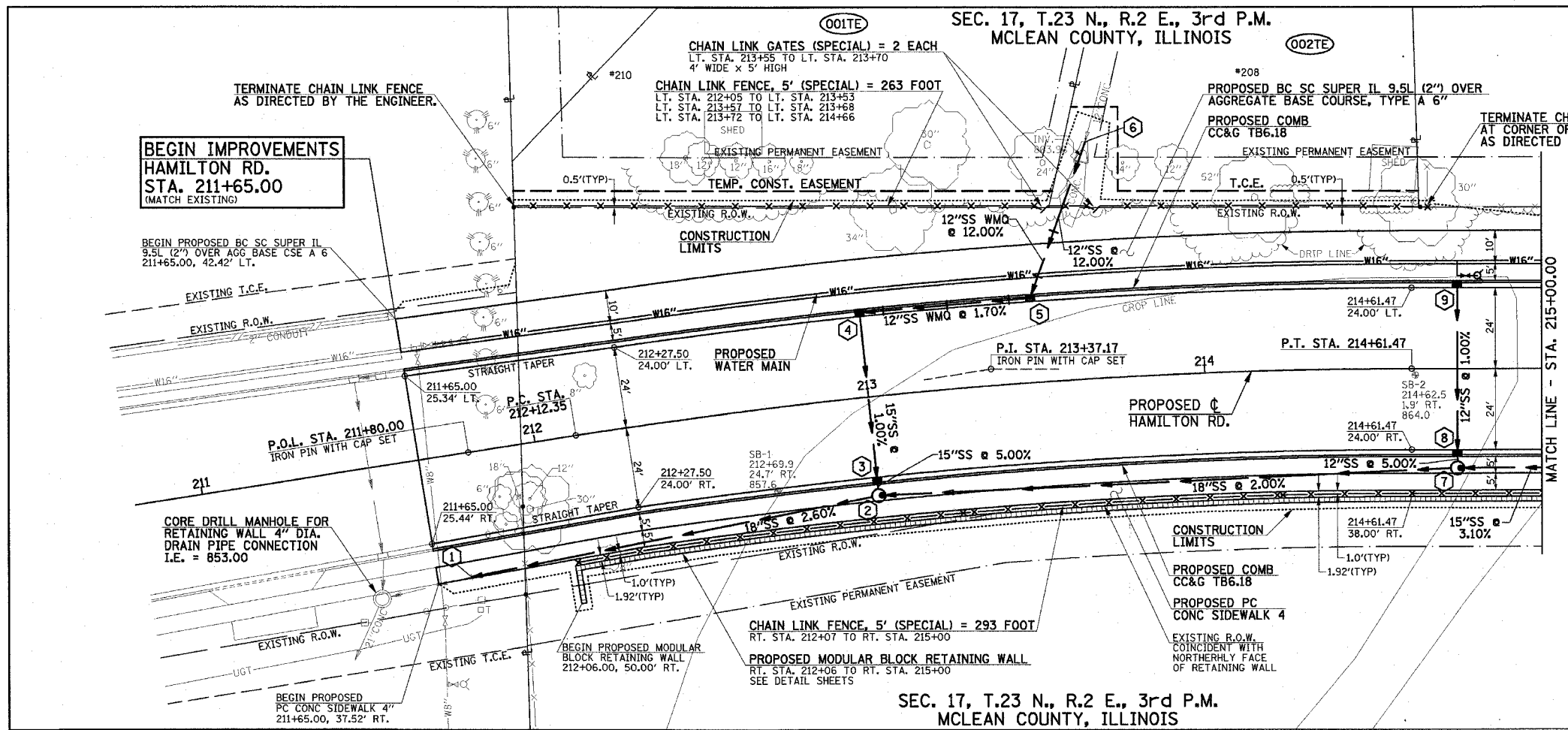


F.A.U. R.T.E.	SECTION	COUNTY	TOTAL SHEETS	SHEET NO.
6371	93-00295-02-PV	MCLEAN	117	34
STA. 210+80.00		TO STA. 215+00.00		
ILLINOIS				
CONTRACT NO. 87267				

PROPOSED  $\phi$  HAMILTON RD. CURVE DATA  
P.I. STA. 213+37.17  
 $\Delta = 90^\circ 4' 32''$   
 $D = 3' 38' 35''$   
 $T = 124.82'$   
 $R = 1572.74'$   
 $L = 249.12'$   
 $E = 4.95'$   
P.C. STA. 212+12.35  
P.T. STA. 214+61.47  
S.E. = NONE

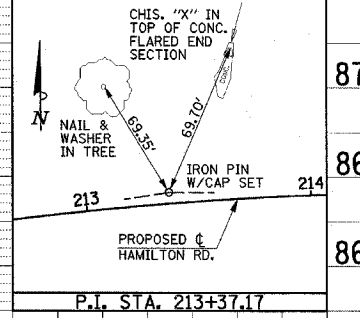
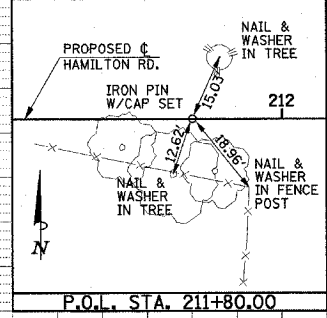
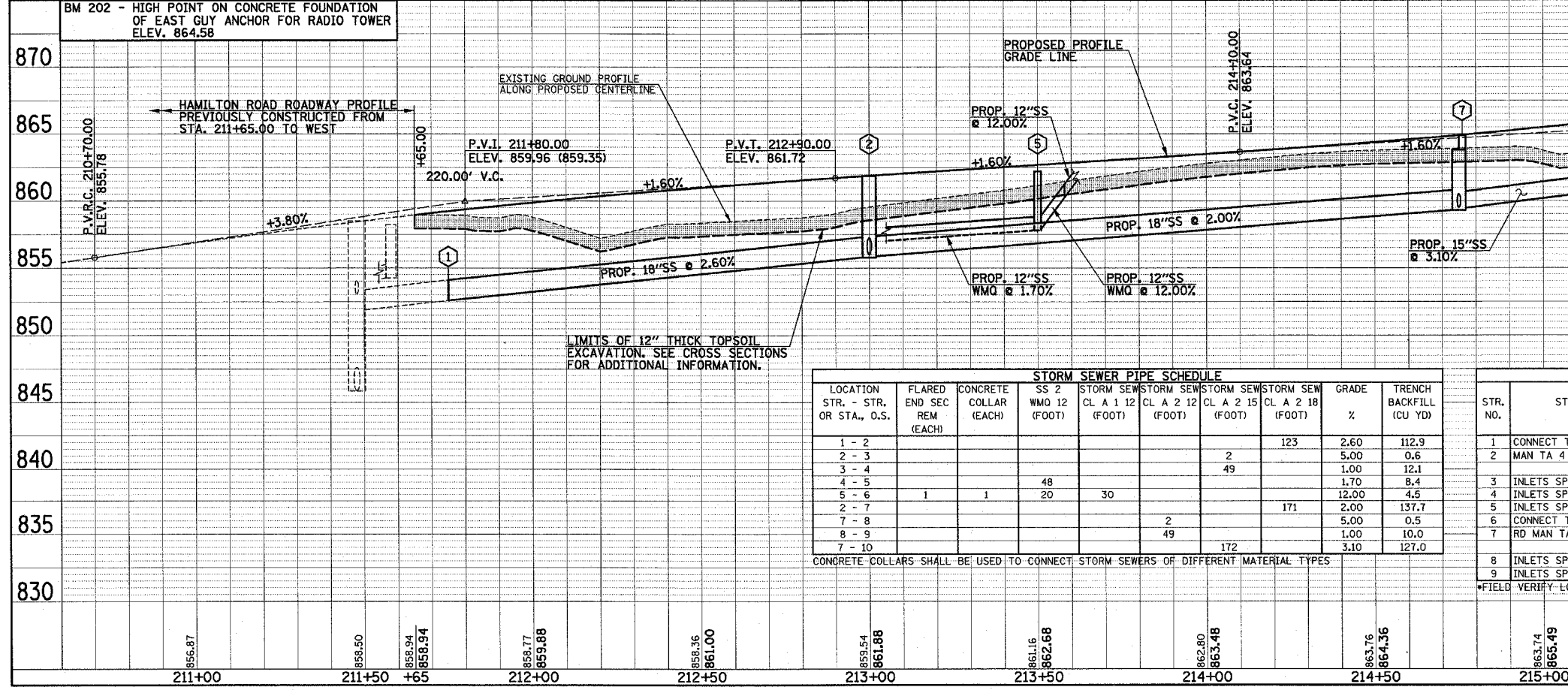


DATE	
BY	
PLAN	
NO.	
DATE	
BY	
PLAN	
NO.	



- FOR REMOVAL/RELOCATION PLAN IN THIS AREA SEE SHEET NO. 27.
- SEE HORIZONTAL ALIGNMENT LAYOUT AND CONTROL SHEETS FOR ADDITIONAL INFORMATION.
- SEE SCHEDULE OF QUANTITIES FOR TYPICAL SECTION PAVEMENT PAY ITEMS AND THEIR LOCATIONS.
- SEE PAVEMENT JOINTS AND WATER MAIN PLAN AND PROFILE SHEETS FOR ADDITIONAL INFORMATION.
- SEE THE STAGE CONSTRUCTION AND MAINTENANCE OF TRAFFIC PLANS FOR THE VARIOUS STAGES AND CONSTRUCTION SEQUENCES ON HAMILTON RD.

DATE	
BY	
PROFILE	
NO.	
DATE	
BY	
PROFILE	
NO.	



LOCATION STR. - STR. OR STA., D.S.	FLARED END SEC REM (EACH)	CONCRETE COLLAR (EACH)	SS 2 WMQ 12 (FOOT)	STORM SEW CL A 1 12 (FOOT)	STORM SEW CL A 2 12 (FOOT)	STORM SEW CL A 2 15 (FOOT)	STORM SEW CL A 2 18 (FOOT)	GRADE %	TRENCH BACKFILL (CU YD)
1 - 2							123	2.60	112.9
2 - 3								5.00	0.6
3 - 4						2	49	1.00	12.1
4 - 5			48					1.70	8.4
5 - 6	1	1	20	30				12.00	4.5
2 - 7							171	2.00	137.7
7 - 8					2			5.00	0.5
8 - 9					49			1.00	10.0
7 - 10							172	3.10	127.0

STR. NO.	STRUCTURE TYPE	OFF-SET SIDE	STA. OF C/L 2 FT. OPENING	OFFSET OF C/L 2 FT. OPENING	STA. OF C/L STR.	OFFSET OF C/L STR.	EX. T/O FRAME/GRATE ELEV.	PR. T/O FRAME/GRATE ELEV.	PR. T/O FLAT SLAB TOP ELEV.	INVERT IN ELEV.	U.S. STR. NO.	INVERT OUT ELEV.	D.S. STR. NO.
1	CONNECT TO EXISTING S.S.	RT	---	---	211+75.00	37.00	---	---	---	*852.60	2	*852.60	WEST
2	MAN TA 4 DIA T1 OPEN	RT	213+01.00	29.50	213+00.00	29.50	---	861.88	---	856.00	3	855.80	1
3	INLETS SPECIAL TYPE H	RT	213+00.00	25.10	213+00.00	25.10	---	861.40	---	856.31	4	856.10	2
4	INLETS SPECIAL TYPE H	LT	213+00.00	25.10	213+00.00	25.10	---	861.40	---	856.98	5	856.80	3
5	INLETS SPECIAL TYPE H	LT	213+50.00	25.10	213+50.00	25.10	---	862.20	---	857.90	6	857.80	4
6	CONNECT TO EXISTING S.S.	LT	---	---	*213+68.80	*70.30	---	---	---	*863.90	NORTH	*863.90	5
7	RD MAN TA 4 DIA T1 OPEN	RT	214+76.00	29.50	214+75.00	29.50	---	864.89	863.79	859.50	8	859.30	2
8	INLETS SPECIAL TYPE H	RT	214+75.00	25.10	214+75.00	25.10	---	864.41	---	859.71	9	859.60	7
9	INLETS SPECIAL TYPE H	LT	214+75.00	25.10	214+75.00	25.10	---	864.41	---	---	---	860.20	8

CONCRETE COLLARS SHALL BE USED TO CONNECT STORM SEWERS OF DIFFERENT MATERIAL TYPES

\*FIELD VERIFY LOCATION AND ELEVATIONS