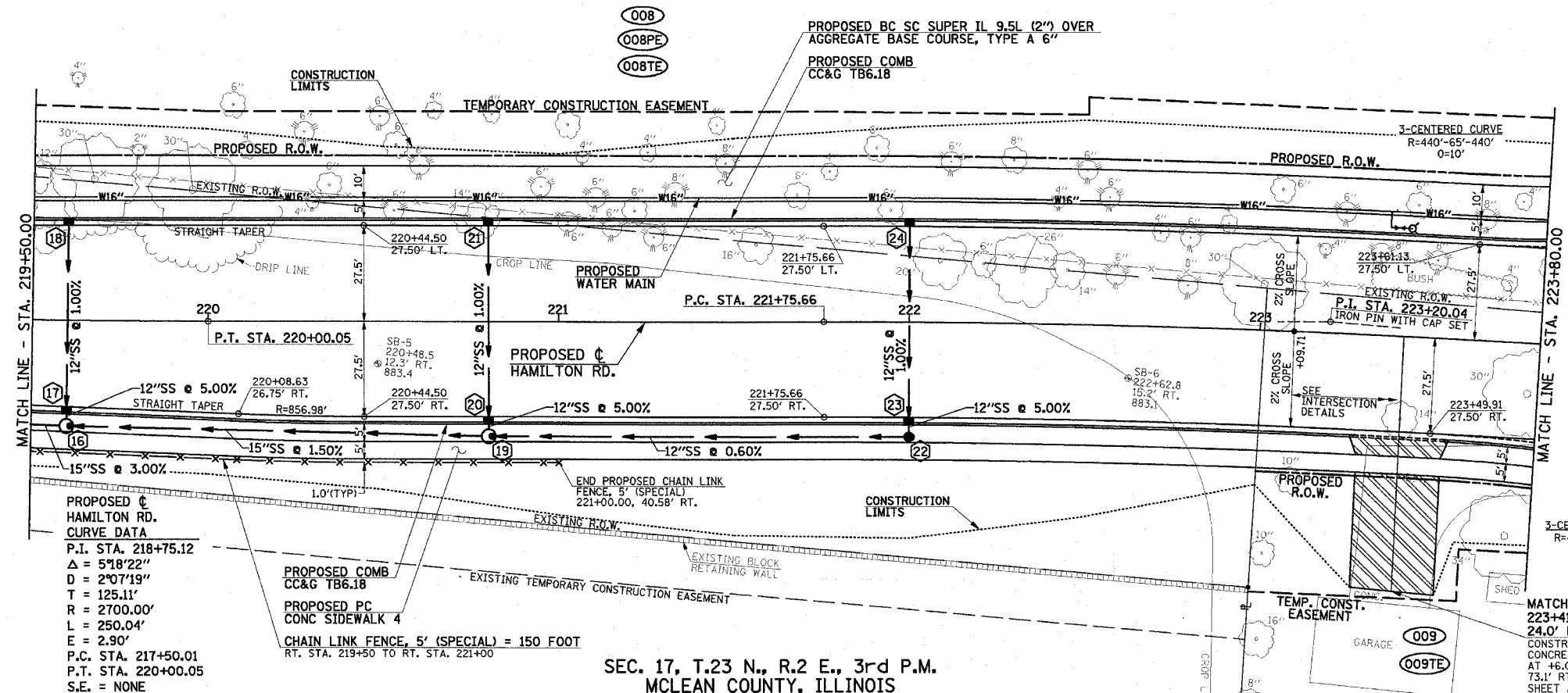
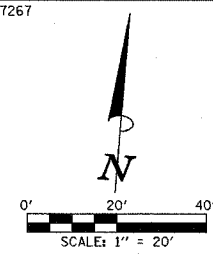


SEC. 17, T.23 N., R.2 E., 3rd P.M.
MCLEAN COUNTY, ILLINOIS

P.A.U. RTE.	SECTION	COUNTY	TOTAL SHEETS	SHEET NO.
6371	93-00295-02-PV	MCLEAN	117	36
STA. 219+50.00		TO STA. 223+80.00		
ILLINOIS				
CONTRACT NO. 87267				

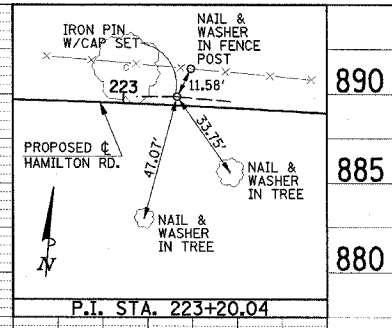
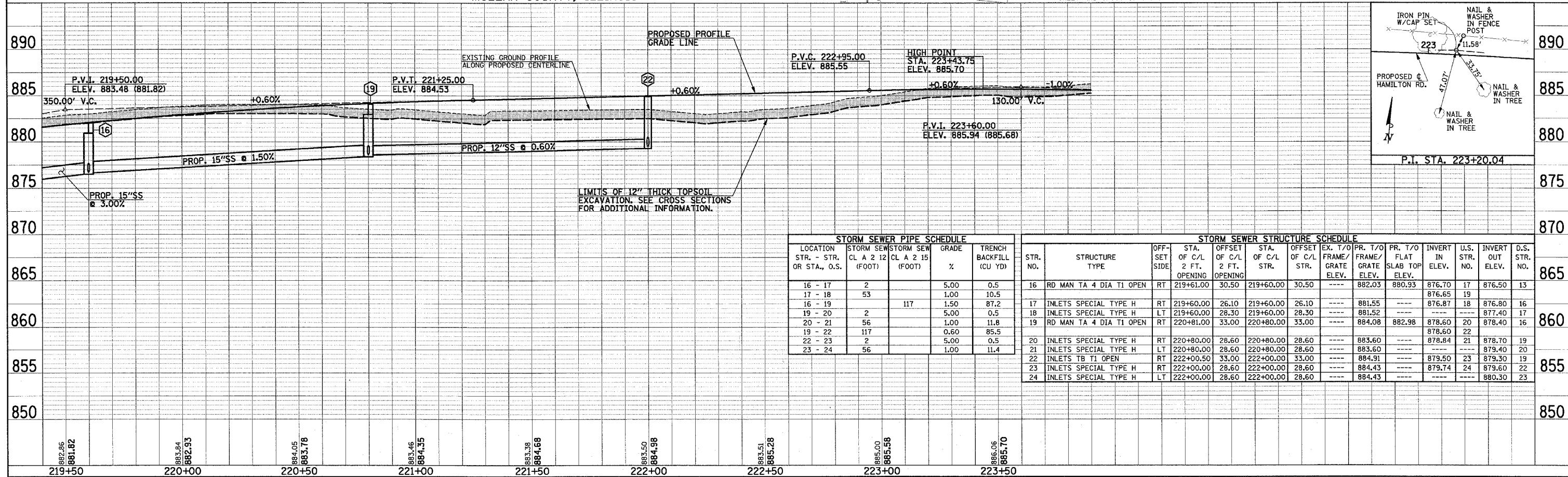
LEGEND
 - PROPOSED PCC DRIVEWAY PAVEMENT (6" FOR P.E. - 8" FOR C.E.)

PROPOSED HAMILTON RD. CURVE DATA
 P.I. STA. 223+20.04
 $\Delta = 51'00''$
 $D = 1'47'26''$
 $T = 144.38'$
 $R = 3200.00'$
 $L = 288.56'$
 $E = 3.26'$
 P.C. STA. 221+75.66
 P.T. STA. 224+64.22
 S.E. = TO MATCH MORRIS AVE. P.G.L. (SEE S.E. TRANSITION TABLES)



- FOR REMOVAL/RELOCATION PLAN IN THIS AREA SEE SHEET NO. 28.
- SEE HORIZONTAL ALIGNMENT LAYOUT AND CONTROL SHEETS FOR ADDITIONAL INFORMATION.
- SEE SCHEDULE OF QUANTITIES FOR TYPICAL SECTION PAVEMENT PAY ITEMS AND THEIR LOCATIONS.
- SEE PAVEMENT JOINTS, INTERSECTION DETAILS, AND WATER MAIN PLAN AND PROFILE SHEETS FOR ADDITIONAL INFORMATION.
- SEE THE STAGE CONSTRUCTION AND MAINTENANCE OF TRAFFIC PLANS FOR THE VARIOUS STAGES AND CONSTRUCTION SEQUENCES ON HAMILTON RD.

SEC. 17, T.23 N., R.2 E., 3rd P.M.
MCLEAN COUNTY, ILLINOIS



DATE: _____ BY: _____
 PLAN: _____
 CHECKED: _____
 DATE: _____ BY: _____

DATE: _____ BY: _____
 PROFILE: _____
 CHECKED: _____
 DATE: _____ BY: _____

P:\B1091\GEOPAK\20FILES\HAMPP3.DGN