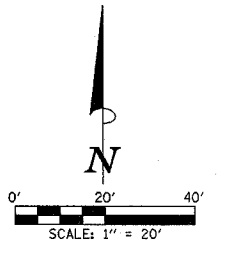


F.A.U. RTE.	SECTION	COUNTY	TOTAL SHEETS	SHEET NO.
6371	93-00295-02-PV	MCLEAN	117	38
STA. 228+20.00		TO STA. 233+00.00		
ILLINOIS				

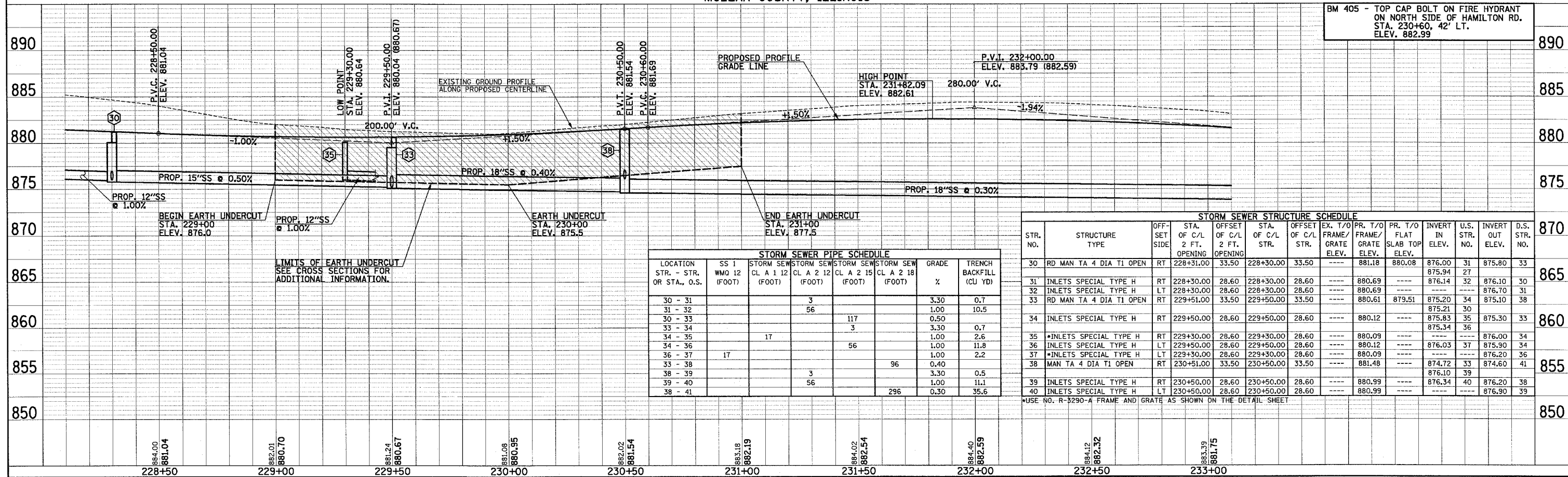
CONTRACT NO. 87267

LEGEND

- PROPOSED AGGREGATE SURFACE COURSE, TYPE B (8" THICK)
- PROPOSED PCC DRIVEWAY PAVEMENT (6" FOR P.E. - 8" FOR C.E.)



- FOR REMOVAL/RELOCATION PLAN IN THIS AREA SEE SHEET NO. 29.
- SEE HORIZONTAL ALIGNMENT LAYOUT AND CONTROL SHEETS FOR ADDITIONAL INFORMATION.
- SEE SCHEDULE OF QUANTITIES FOR TYPICAL SECTION PAVEMENT PAY ITEMS AND THEIR LOCATIONS.
- SEE PAVEMENT JOINTS, WATER MAIN, AND SANITARY SEWER PLAN AND PROFILE SHEETS FOR ADDITIONAL INFORMATION.
- SEE THE STAGE CONSTRUCTION AND MAINTENANCE OF TRAFFIC PLANS FOR THE VARIOUS STAGES AND CONSTRUCTION SEQUENCES ON HAMILTON RD.



STORM SEWER PIPE SCHEDULE

LOCATION STR. - STR. OR STA., O.S.	SS 1 WMO 12 (FOOT)	STORM SEW CL A 2 12 (FOOT)	STORM SEW CL A 2 15 (FOOT)	STORM SEW CL A 2 18 (FOOT)	GRADE %	TRENCH BACKFILL (CU YD)
30 - 31		3			3.30	0.7
31 - 32		56			1.00	10.5
30 - 33			117		0.50	
33 - 34			3		3.30	0.7
34 - 35		17			1.00	2.6
34 - 36			56		1.00	11.8
36 - 37					1.00	2.2
33 - 38				96	0.40	
38 - 39			3		3.30	0.5
39 - 40			56		1.00	11.1
38 - 41				296	0.30	35.6

STORM SEWER STRUCTURE SCHEDULE

STR. NO.	STRUCTURE TYPE	OFF-SET SIDE	STA. OF C/L 2 FT. OPENING	OFFSET OF C/L 2 FT. STR.	STA. OF C/L STR.	OFFSET OF C/L STR.	EX. T/O FRAME/GRATE ELEV.	T/O FRAME/GRATE ELEV.	PR. T/O FLAT SLAB TOP ELEV.	INVERT IN ELEV.	U.S. STR. NO.	INVERT OUT ELEV.	D.S. STR. NO.
30	RD MAN TA 4 DIA T1 OPEN	RT	228+31.00	33.50	228+30.00	33.50	881.18	880.08	876.00	31	875.80	33	
31	INLETS SPECIAL TYPE H	RT	228+30.00	28.60	228+30.00	28.60	880.69	880.69	876.14	32	876.14	30	
32	INLETS SPECIAL TYPE H	LT	228+30.00	28.60	228+30.00	28.60	880.69	880.69	876.70	31	876.70	31	
33	RD MAN TA 4 DIA T1 OPEN	RT	229+51.00	33.50	229+50.00	33.50	880.61	879.51	875.20	34	875.10	38	
34	INLETS SPECIAL TYPE H	RT	229+50.00	28.60	229+50.00	28.60	880.12	880.12	875.21	30	875.21	30	
35	INLETS SPECIAL TYPE H	RT	229+30.00	28.60	229+30.00	28.60	880.09	880.09	876.00	34	876.00	34	
36	INLETS SPECIAL TYPE H	LT	229+50.00	28.60	229+50.00	28.60	880.12	880.12	876.03	37	875.90	34	
37	INLETS SPECIAL TYPE H	LT	229+30.00	28.60	229+30.00	28.60	880.09	880.09	876.20	36	876.20	36	
38	MAN TA 4 DIA T1 OPEN	RT	230+51.00	33.50	230+50.00	33.50	881.48	881.48	874.72	33	874.60	41	
39	INLETS SPECIAL TYPE H	RT	230+50.00	28.60	230+50.00	28.60	880.99	880.99	876.10	39	876.10	39	
40	INLETS SPECIAL TYPE H	LT	230+50.00	28.60	230+50.00	28.60	880.99	880.99	876.34	40	876.20	38	

*USE NO. R-3290-A FRAME AND GRATE AS SHOWN ON THE DETAIL SHEET