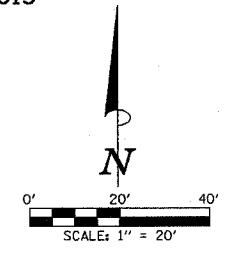


SEC. 17, T.23 N., R.2 E., 3rd P.M.
MCLEAN COUNTY, ILLINOIS

F.A.U. RTE.	SECTION	COUNTY	TOTAL SHEET NO.
6371	93-00295-02-PV	MCLEAN	117 39
STA. 233+00.00		TO STA. 237+00.00	
ILLINOIS			
CONTRACT NO. 87267			

LEGEND
 - PROPOSED AGGREGATE SURFACE COURSE, TYPE B (8" THICK)
 - PROPOSED PCC DRIVEWAY PAVEMENT (6" FOR P.E. - 8" FOR C.E.)



PROPOSED CURVE DATA
 P.I. STA. 236+24.22
 $\Delta = 5'00'00''$
 $D = 1'54'35''$
 $T = 130.98'$
 $R = 3000.00'$
 $L = 261.80'$
 $E = 2.86'$
 P.C. STA. 234+93.24
 P.T. STA. 237+55.04
 S.E. = NONE

SEC. 17, T.23 N., R.2 E., 3rd P.M.
MCLEAN COUNTY, ILLINOIS

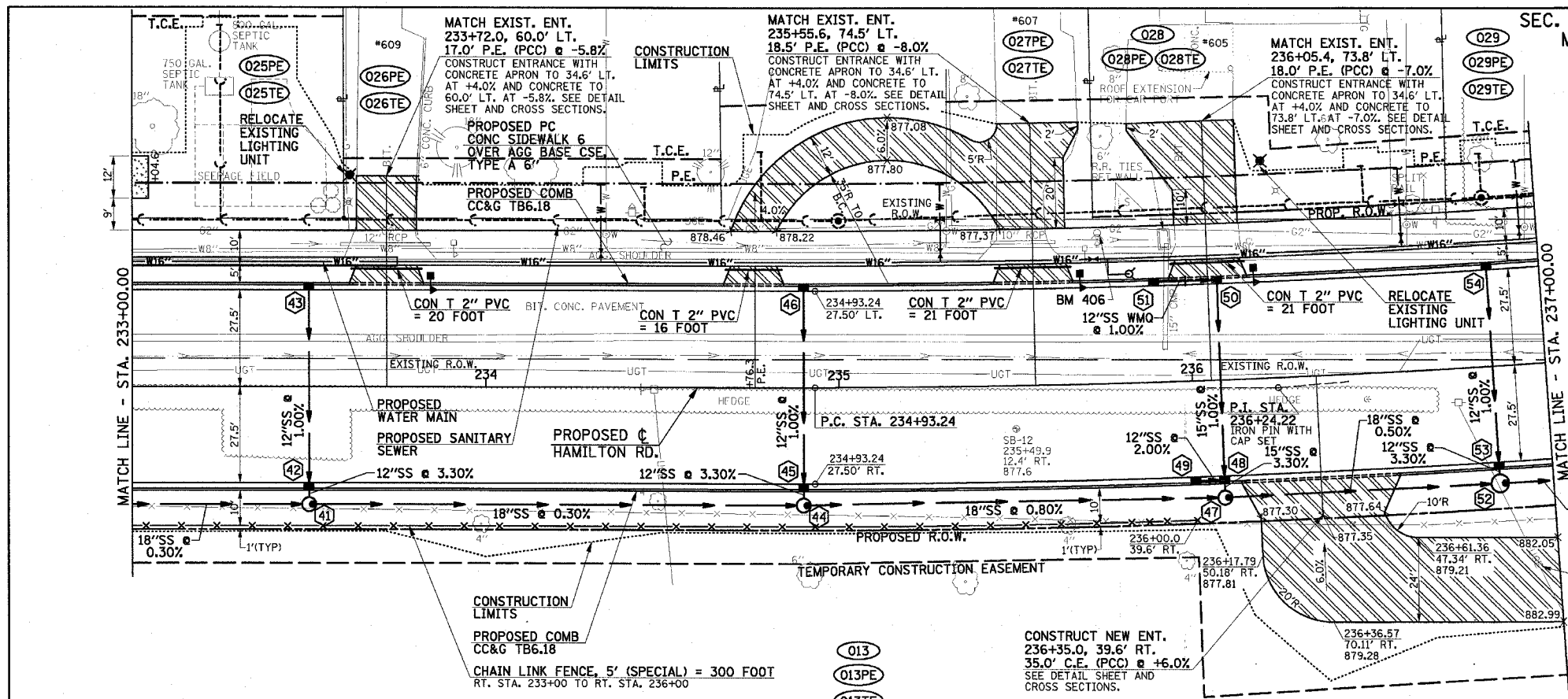
FOR REMOVAL/RELOCATION PLAN IN THIS AREA SEE SHEET NO'S. 29 & 30.

SEE HORIZONTAL ALIGNMENT LAYOUT AND CONTROL SHEETS FOR ADDITIONAL INFORMATION.

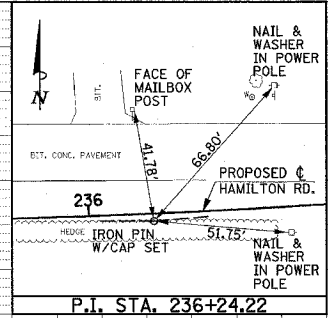
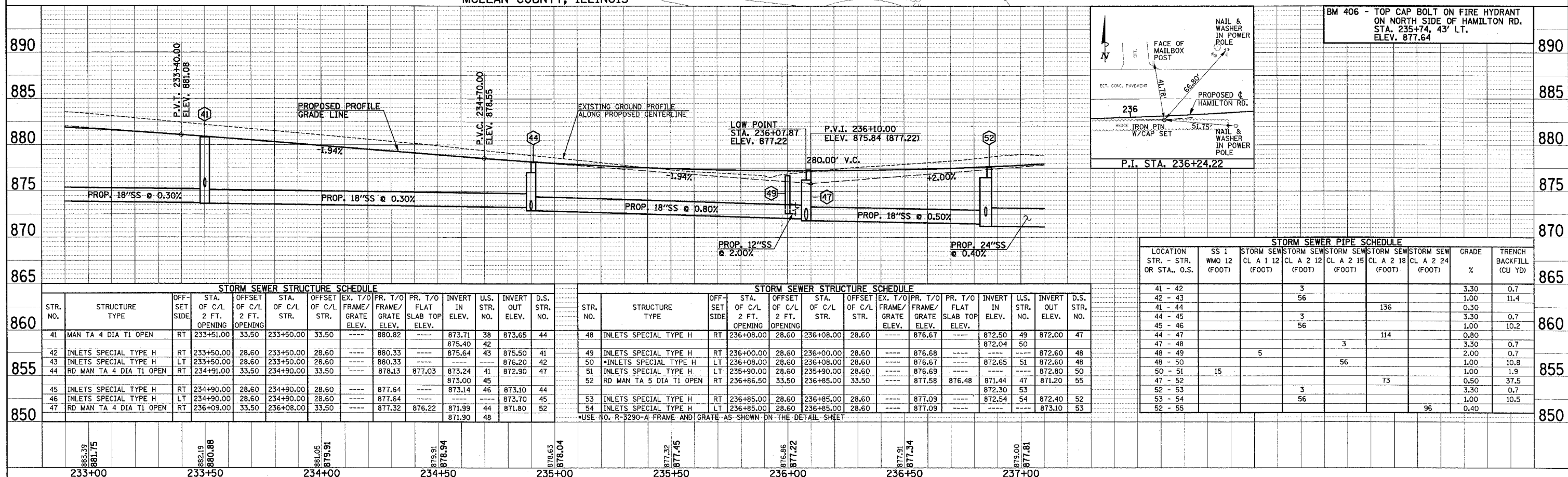
SEE SCHEDULE OF QUANTITIES FOR TYPICAL SECTION PAVEMENT PAY ITEMS AND THEIR LOCATIONS.

SEE PAVEMENT JOINTS, WATER MAIN, AND SANITARY SEWER PLAN AND PROFILE SHEETS FOR ADDITIONAL INFORMATION.

SEE THE STAGE CONSTRUCTION AND MAINTENANCE OF TRAFFIC PLANS FOR THE VARIOUS STAGES AND CONSTRUCTION SEQUENCES ON HAMILTON RD.



GOLF COURSE ELECTRICAL SERVICE TO BE MODIFIED. SEE DETAIL SHEETS.



BM 406 - TOP CAP BOLT ON FIRE HYDRANT ON NORTH SIDE OF HAMILTON RD. STA. 235+74, 43' LT. ELEV. 877.64

STORM SEWER STRUCTURE SCHEDULE

STR. NO.	STRUCTURE TYPE	OFF-SET SIDE	STA. OF C/L 2 FT. OPENING	OFFSET OF C/L 2 FT. OPENING	STA. OF C/L STR.	OFFSET OF C/L STR.	EX. T/O FRAME/GRATE ELEV.	PR. T/O FRAME/GRATE ELEV.	PR. T/O FLAT SLAB TOP ELEV.	INVERT IN ELEV.	U.S. STR. NO.	INVERT OUT ELEV.	D.S. STR. NO.
41	MAN TA 4 DIA TI OPEN	RT	233+51.00	33.50	233+50.00	33.50	880.82	---	---	873.71	38	873.65	44
42	INLETS SPECIAL TYPE H	RT	233+50.00	28.60	233+50.00	28.60	880.33	---	---	875.40	42	875.40	---
43	INLETS SPECIAL TYPE H	LT	233+50.00	28.60	233+50.00	28.60	880.33	---	---	875.64	43	875.50	41
44	RD MAN TA 4 DIA TI OPEN	RT	234+91.00	33.50	234+90.00	33.50	878.13	877.03	873.24	41	872.90	47	---
45	INLETS SPECIAL TYPE H	RT	234+90.00	28.60	234+90.00	28.60	877.64	---	---	873.14	46	873.10	44
46	INLETS SPECIAL TYPE H	LT	234+90.00	28.60	234+90.00	28.60	877.64	---	---	873.70	45	873.70	45
47	RD MAN TA 4 DIA TI OPEN	RT	236+09.00	33.50	236+08.00	33.50	877.32	876.22	871.99	44	871.80	52	---

STORM SEWER STRUCTURE SCHEDULE

STR. NO.	STRUCTURE TYPE	OFF-SET SIDE	STA. OF C/L 2 FT. OPENING	OFFSET OF C/L 2 FT. OPENING	STA. OF C/L STR.	OFFSET OF C/L STR.	EX. T/O FRAME/GRATE ELEV.	PR. T/O FRAME/GRATE ELEV.	PR. T/O FLAT SLAB TOP ELEV.	INVERT IN ELEV.	U.S. STR. NO.	INVERT OUT ELEV.	D.S. STR. NO.
48	INLETS SPECIAL TYPE H	RT	236+08.00	28.60	236+08.00	28.60	876.67	---	---	872.50	49	872.00	47
49	INLETS SPECIAL TYPE H	RT	236+00.00	28.60	236+00.00	28.60	876.68	---	---	872.04	50	872.00	48
50	INLETS SPECIAL TYPE H	LT	236+08.00	28.60	236+08.00	28.60	876.67	---	---	872.65	51	872.60	48
51	INLETS SPECIAL TYPE H	LT	235+90.00	28.60	235+90.00	28.60	876.69	---	---	872.80	50	872.80	50
52	RD MAN TA 5 DIA TI OPEN	RT	236+86.50	33.50	236+85.00	33.50	877.58	876.48	871.44	47	871.20	55	---
53	INLETS SPECIAL TYPE H	RT	236+85.00	28.60	236+85.00	28.60	877.09	---	---	872.30	53	872.30	53
54	INLETS SPECIAL TYPE H	LT	236+85.00	28.60	236+85.00	28.60	877.09	---	---	872.54	54	872.40	52

LOCATION STR. - STR. OR STA., O.S.	SS 1 WMQ 12 (FOOT)	STORM SEWER					GRADE %	TRENCH BACKFILL (CU YD)
		CL A 1 12 (FOOT)	CL A 2 12 (FOOT)	CL A 2 15 (FOOT)	CL A 2 18 (FOOT)	CL A 2 24 (FOOT)		
41 - 42				3			3.30	0.7
42 - 43				56			1.00	11.4
41 - 44						136	0.30	---
44 - 45				3			3.30	0.7
45 - 46				56			1.00	10.2
44 - 47						114	0.80	---
47 - 48					3		3.30	0.7
48 - 49							2.00	0.7
48 - 50					56		1.00	10.8
50 - 51	15						1.00	1.9
47 - 52						73	0.50	37.5
52 - 53				3			3.30	0.7
53 - 54				56			1.00	10.5
52 - 55						96	0.40	---