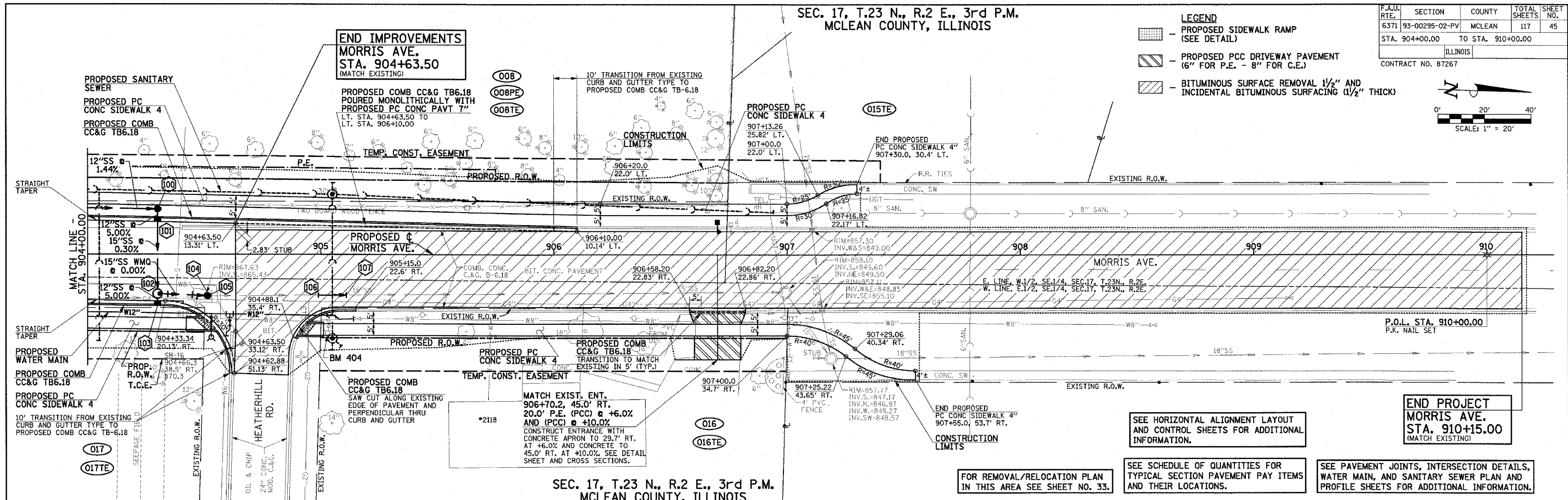
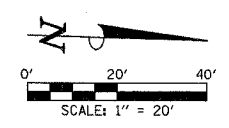


SEC. 17, T.23 N., R.2 E., 3rd P.M.
MCLEAN COUNTY, ILLINOIS

F.A.U. RTE.	SECTION	COUNTY	TOTAL SHEETS	SHEET NO.
6371	93-00295-02-PV	MCLEAN	117	45
STA. 904+00.00		TO STA. 910+00.00		
ILLINOIS				
CONTRACT NO. 87267				

- LEGEND**
- PROPOSED SIDEWALK RAMP (SEE DETAIL)
 - PROPOSED PCC DRIVEWAY PAVEMENT (6" FOR P.E. - 8" FOR C.E.)
 - BITUMINOUS SURFACE REMOVAL 1/2" AND INCIDENTAL BITUMINOUS SURFACING (1/2" THICK)



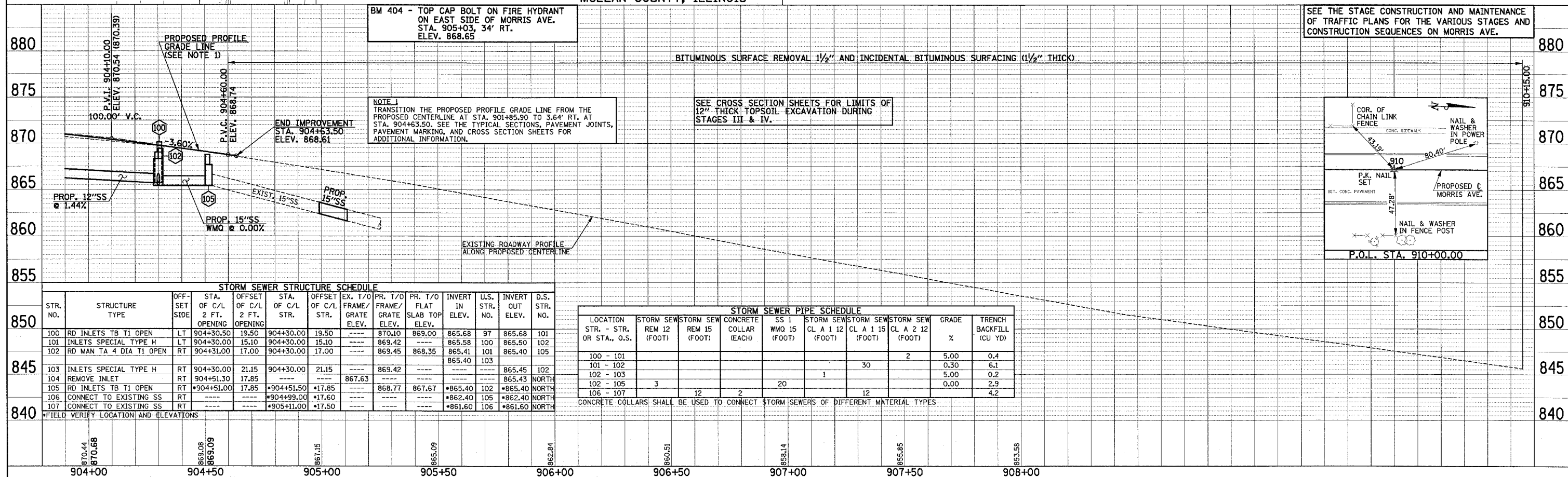
SEC. 17, T.23 N., R.2 E., 3rd P.M.
MCLEAN COUNTY, ILLINOIS

SEE HORIZONTAL ALIGNMENT LAYOUT AND CONTROL SHEETS FOR ADDITIONAL INFORMATION.

SEE SCHEDULE OF QUANTITIES FOR REMOVAL/RELOCATION PLAN IN THIS AREA SEE SHEET NO. 33.

SEE PAVEMENT JOINTS, INTERSECTION DETAILS, WATER MAIN, AND SANITARY SEWER PLAN AND PROFILE SHEETS FOR ADDITIONAL INFORMATION.

END PROJECT
MORRIS AVE.
STA. 910+15.00
(MATCH EXISTING)



BM 404 - TOP CAP BOLT ON FIRE HYDRANT ON EAST SIDE OF MORRIS AVE. STA. 905+03, 34' RT. ELEV. 868.65

NOTE 1
TRANSITION THE PROPOSED PROFILE GRADE LINE FROM THE PROPOSED CENTERLINE AT STA. 901+85.90 TO 3.64' RT. AT STA. 904+63.50. SEE THE TYPICAL SECTIONS, PAVEMENT JOINTS, PAVEMENT MARKING, AND CROSS SECTION SHEETS FOR ADDITIONAL INFORMATION.

SEE CROSS SECTION SHEETS FOR LIMITS OF 12" THICK TOPSOIL EXCAVATION DURING STAGES III & IV.

SEE THE STAGE CONSTRUCTION AND MAINTENANCE OF TRAFFIC PLANS FOR THE VARIOUS STAGES AND CONSTRUCTION SEQUENCES ON MORRIS AVE.

STORM SEWER STRUCTURE SCHEDULE

STR. NO.	STRUCTURE TYPE	OFF-SET SIDE	STA. OF C/L 2 FT. OPENING	OFFSET OF C/L 2 FT. OPENING	STA. OF C/L STR.	OFFSET OF C/L STR.	EX. T/O FRAME/GRATE ELEV.	PR. T/O FRAME/GRATE ELEV.	INVERT IN ELEV.	U.S. STR. NO.	INVERT OUT ELEV.	D.S. STR. NO.
100	RD INLETS TB T1 OPEN	LT	904+30.50	19.50	904+30.00	19.50	870.10	869.00	865.68	97	865.68	101
101	INLETS SPECIAL TYPE H	LT	904+30.00	15.10	904+30.00	15.10	869.42	868.35	865.58	100	865.58	102
102	RD MAN TA 4 DIA T1 OPEN	RT	904+31.00	17.00	904+30.00	17.00	869.45	868.35	865.41	101	865.40	105
103	INLETS SPECIAL TYPE H	RT	904+30.00	21.15	904+30.00	21.15	869.42	868.35	865.45	102	865.45	102
104	REMOVE INLET	RT	904+51.30	17.85	904+51.30	17.85	867.63	866.77	865.43	103	865.43	NORTH
105	RD INLETS TB T1 OPEN	RT	904+51.00	17.85	904+51.00	17.85	868.77	867.67	865.40	102	865.40	NORTH
106	CONNECT TO EXISTING SS	RT	904+99.00	17.60	904+99.00	17.60	862.40	861.60	862.40	105	862.40	NORTH
107	CONNECT TO EXISTING SS	RT	905+11.00	17.50	905+11.00	17.50	861.60	861.60	861.60	106	861.60	NORTH

STORM SEWER PIPE SCHEDULE

LOCATION STR. - STR. OR STA., O.S.	STORM SEW REM 12 (FOOT)	STORM SEW REM 15 (FOOT)	CONCRETE COLLAR (EACH)	SS 1 WMQ 15 (FOOT)	STORM SEW CL A 1 12 (FOOT)	STORM SEW CL A 1 15 (FOOT)	STORM SEW CL A 2 12 (FOOT)	GRADE %	TRENCH BACKFILL (CU YD)
100 - 101								5.00	0.4
101 - 102								0.30	6.1
102 - 103								5.00	0.2
102 - 105	3			20				0.00	2.9
106 - 107		12	2			12			4.2

CONCRETE COLLARS SHALL BE USED TO CONNECT STORM SEWERS OF DIFFERENT MATERIAL TYPES