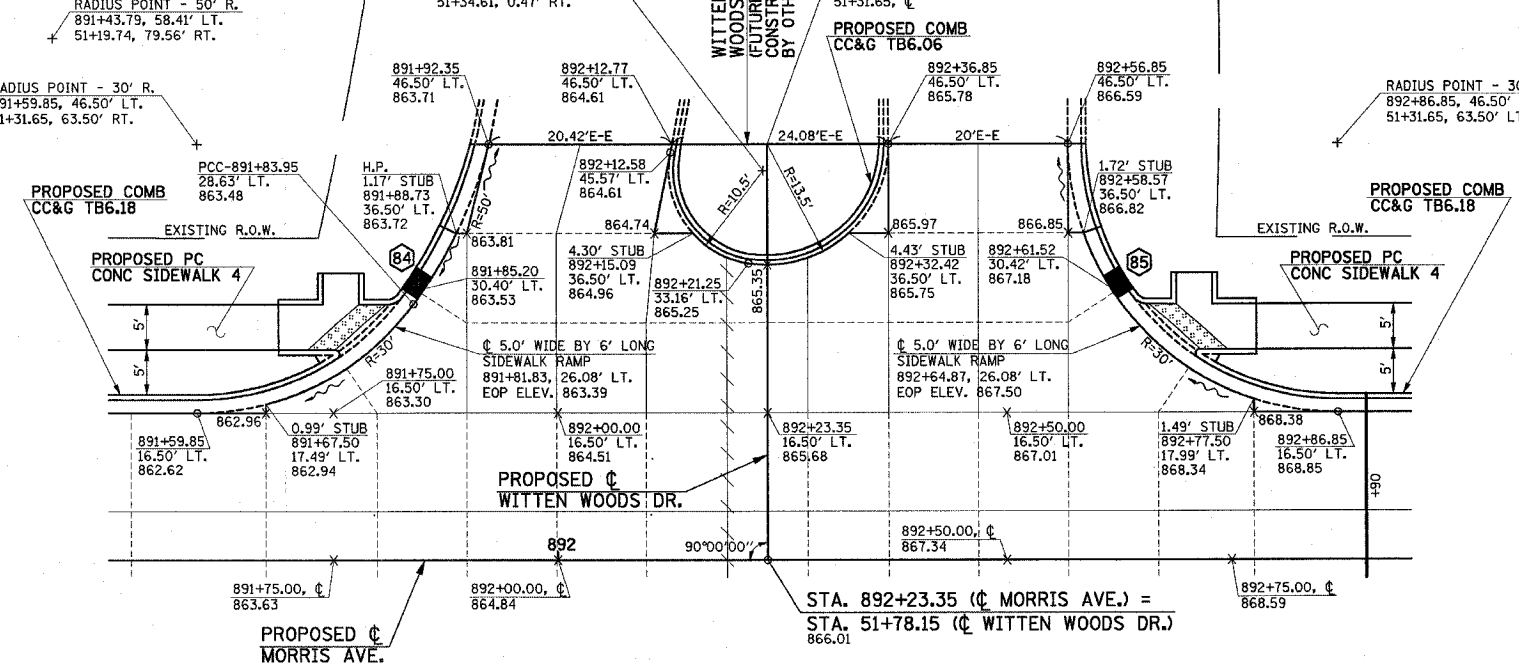
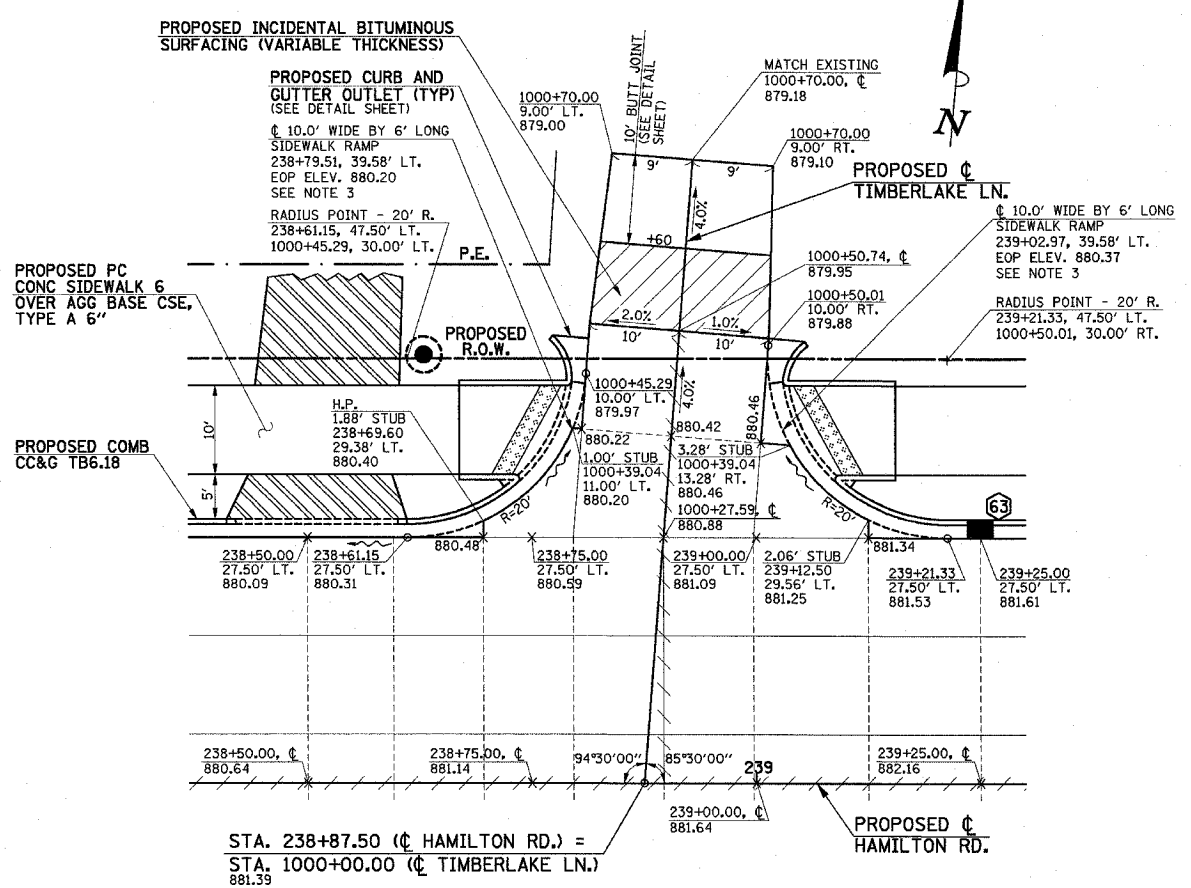
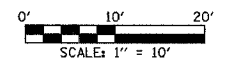
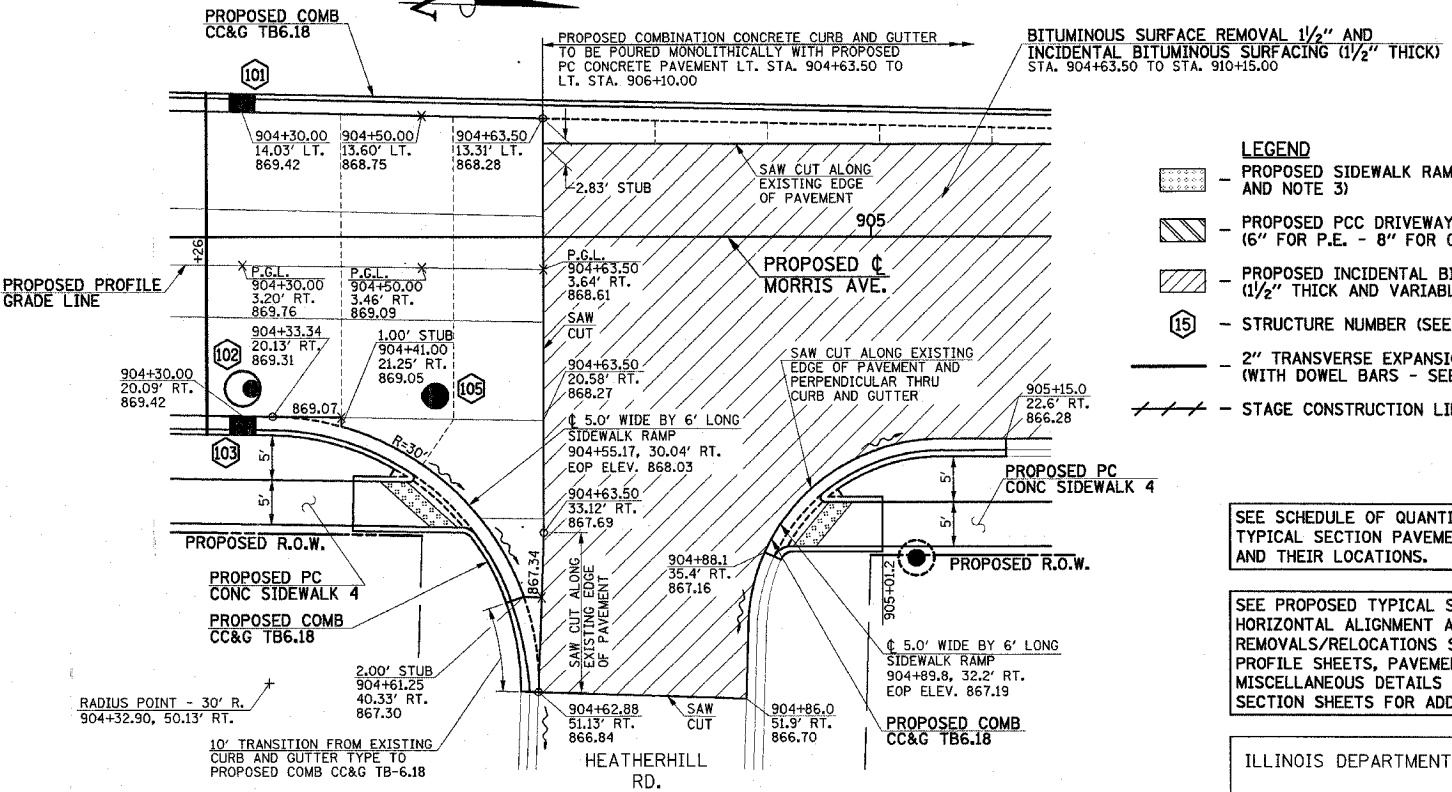


|                    |                |        |              |           |
|--------------------|----------------|--------|--------------|-----------|
| P.A.U. RTE.        | SECTION        | COUNTY | TOTAL SHEETS | SHEET NO. |
| 6371               | 93-00295-02-PV | MCLEAN | 117          | 52        |
| STA.               | TO STA.        |        | ILLINOIS     |           |
| CONTRACT NO. 87267 |                |        |              |           |



**MORRIS AVE./  
WITTEN WOODS DR.**

**HAMILTON RD./  
TIMBERLAKE LN.**



**MORRIS AVE./  
HEATHERHILL RD.**

**NOTES**

1. THE P.C. CONCRETE PAVEMENT SHALL BE POURED MONOLITHIC WITH THE COMBINATION CONCRETE CURB AND GUTTER AT ALL THE STUB LOCATIONS SHOWN ON THE PLANS AND ON MORRIS AVE. FROM LT. STA. 904+63.50 TO LT. STA. 906+10.00. THE COST OF ADDITIONAL GUTTER FLAG WIDTH WILL BE PAID FOR AT THE CONTRACT UNIT PRICE PER SQUARE YARD FOR THE SPECIFIED TYPE OF P.C. CONCRETE PAVEMENT.  
ON HAMILTON RD. AND MORRIS AVE., THE P.C. CONCRETE PAVEMENT SHALL NOT BE POURED MONOLITHIC WITH THE COMBINATION CONCRETE CURB AND GUTTER EXCEPT AT THE STUB LOCATIONS.
2. ALL ELEVATIONS REFERRED TO ARE TO THE TOP OF FINISHED CONSTRUCTION.
3. THE SIDEWALK RAMPS FOR THE 10' WIDE PEDESTRIAN TRAIL SHALL BE PAID FOR AT THE CONTRACT UNIT PRICE FOR PORTLAND CEMENT CONCRETE SIDEWALK 6 INCH.
4. SEE DRAINAGE STRUCTURE TABLES ON PLAN/PROFILE SHEETS FOR HORIZONTAL LOCATIONS AND VERTICAL ELEVATIONS OF DRAINAGE STRUCTURES.
5. ALL STREET RADII ARE DIMENSIONED TO THE EDGE OF PAVEMENT.

- LEGEND**
- PROPOSED SIDEWALK RAMP (SEE DETAIL SHEET AND NOTE 3)
  - PROPOSED PCC DRIVEWAY PAVEMENT (6" FOR P.E. - 8" FOR C.E.)
  - PROPOSED INCIDENTAL BITUMINOUS SURFACING (1/2" THICK AND VARIABLE THICKNESS)
  - STRUCTURE NUMBER (SEE PLAN/PROFILE SHEETS)
  - 2" TRANSVERSE EXPANSION JOINT (WITH DOWEL BARS - SEE STANDARD 420001)
  - STAGE CONSTRUCTION LIMITS

SEE SCHEDULE OF QUANTITIES FOR TYPICAL SECTION PAVEMENT PAY ITEMS AND THEIR LOCATIONS.

SEE PROPOSED TYPICAL SECTION SHEETS, HORIZONTAL ALIGNMENT AND CONTROL SHEET, REMOVALS/RELOCATIONS SHEETS, PLAN AND PROFILE SHEETS, PAVEMENT JOINTS SHEETS, MISCELLANEOUS DETAILS SHEETS, AND CROSS SECTION SHEETS FOR ADDITIONAL INFORMATION.

ILLINOIS DEPARTMENT OF TRANSPORTATION  
**INTERSECTION DETAILS**

DATE : 3-05  
DRAWN BY : J.L.B.  
CHECKED BY : R.L.H.