

PROPOSED  $\phi$   
HAMILTON RD.  
CURVE DATA  
P.I. STA. 223+20.04  
 $\Delta = 5^{\circ}10'00''$   
D = 1'47'26"  
T = 144.38'  
R = 3200.00'  
L = 288.56'  
E = 3.26'  
P.C. STA. 221+75.66  
P.T. STA. 224+64.22  
S.E. = TO MATCH MORRIS AVE. P.G.L.  
(SEE S.E. TRANSITION TABLES)

PROPOSED BC SC  
SUPER II 9.5L (2")  
OVER AGG BASE CSE,  
TYPE A 6"

PROPOSED PC  
CONC SIDEWALK 4

PROPOSED COMB  
CC&G TB6.18

MATCH LINE - STA. 901+00.00  
SEE SHEET NO. 58

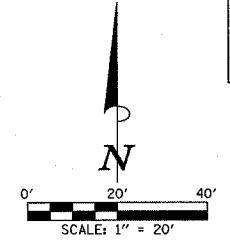
PROPOSED  $\phi$   
MORRIS AVE.

PROPOSED PC  
CONC SIDEWALK 4

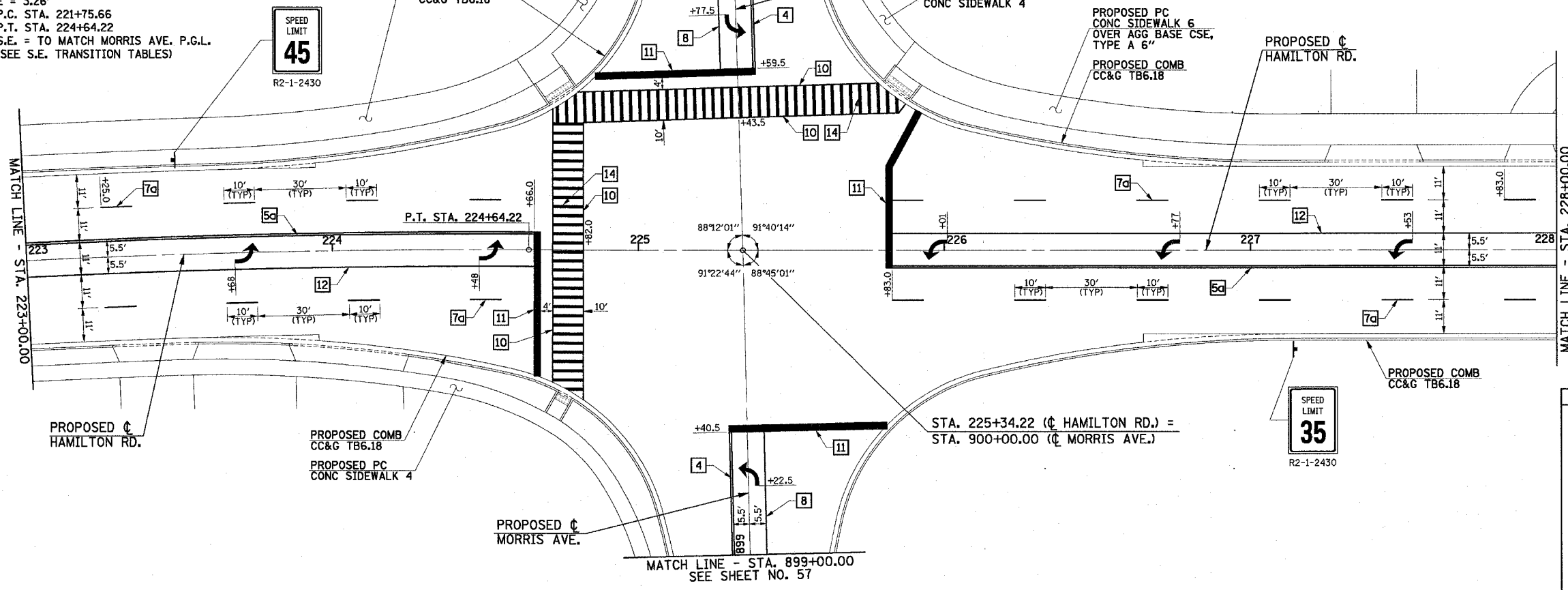
PROPOSED PC  
CONC SIDEWALK 6  
OVER AGG BASE CSE,  
TYPE A 6"

PROPOSED COMB  
CC&G TB6.18

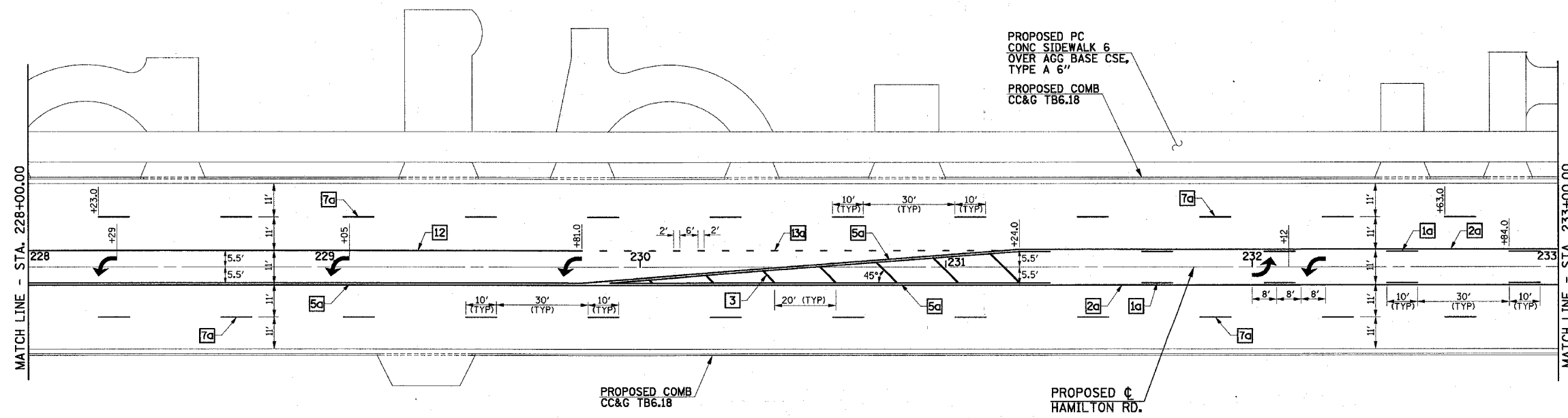
NOTE:  
THE PROPOSED TRAFFIC CONTROL SIGNS SHOWN WILL BE FURNISHED  
AND INSTALLED BY OTHERS AND ARE FOR INFORMATION ONLY. THE  
CONTRACTOR SHALL NOTIFY THE ENGINEER A MINIMUM OF 14 DAYS  
PRIOR TO OPENING THE PROPOSED ROADWAYS TO TRAFFIC. THE  
ENGINEER WILL COORDINATE THE SIGN INSTALLATION WITH THE  
CITY OF BLOOMINGTON.



F.A.U. RTE.	SECTION	COUNTY	TOTAL SHEETS	SHEET NO.
6371	93-00295-02-PV	MCLEAN	117	55
STA. 223+00.00		TO STA. 233+00.00		
ILLINOIS				
CONTRACT NO. 87267				



TYPICAL PAVEMENT MARKING LEGEND			
1	4" SKIP-DASH (YELLOW)	7c	6" SKIP-DASH (WHITE)
1a	6" SKIP-DASH (YELLOW)	8	4" SOLID (WHITE)
2	4" SOLID (YELLOW)	8a	6" SOLID (WHITE)
2a	6" SOLID (YELLOW)	9	12" DIAGONAL (WHITE)
3	12" DIAGONAL (YELLOW)	10	6" CROSSWALK (WHITE)
4	4" DOUBLE YELLOW (NARROW)	11	24" STOP BAR (WHITE)
5	4" DOUBLE YELLOW (WIDE)	12	8" SOLID (WHITE)
5a	6" DOUBLE YELLOW (WIDE)	13	4" LANE LINE EXTENSIONS (WHITE)
6	RESERVED	13a	8" LANE LINE EXTENSIONS (WHITE)
7	4" SKIP-DASH (WHITE)	14	12" CROSSWALK BAR (WHITE)



ILLINOIS DEPARTMENT OF TRANSPORTATION

**HAMILTON ROAD  
PAVEMENT MARKING**

DATE : 3-05  
DRAWN BY : J.L.B.  
CHECKED BY : R.L.H.

SCALE : 1"=20'