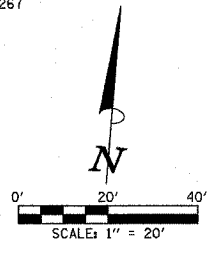


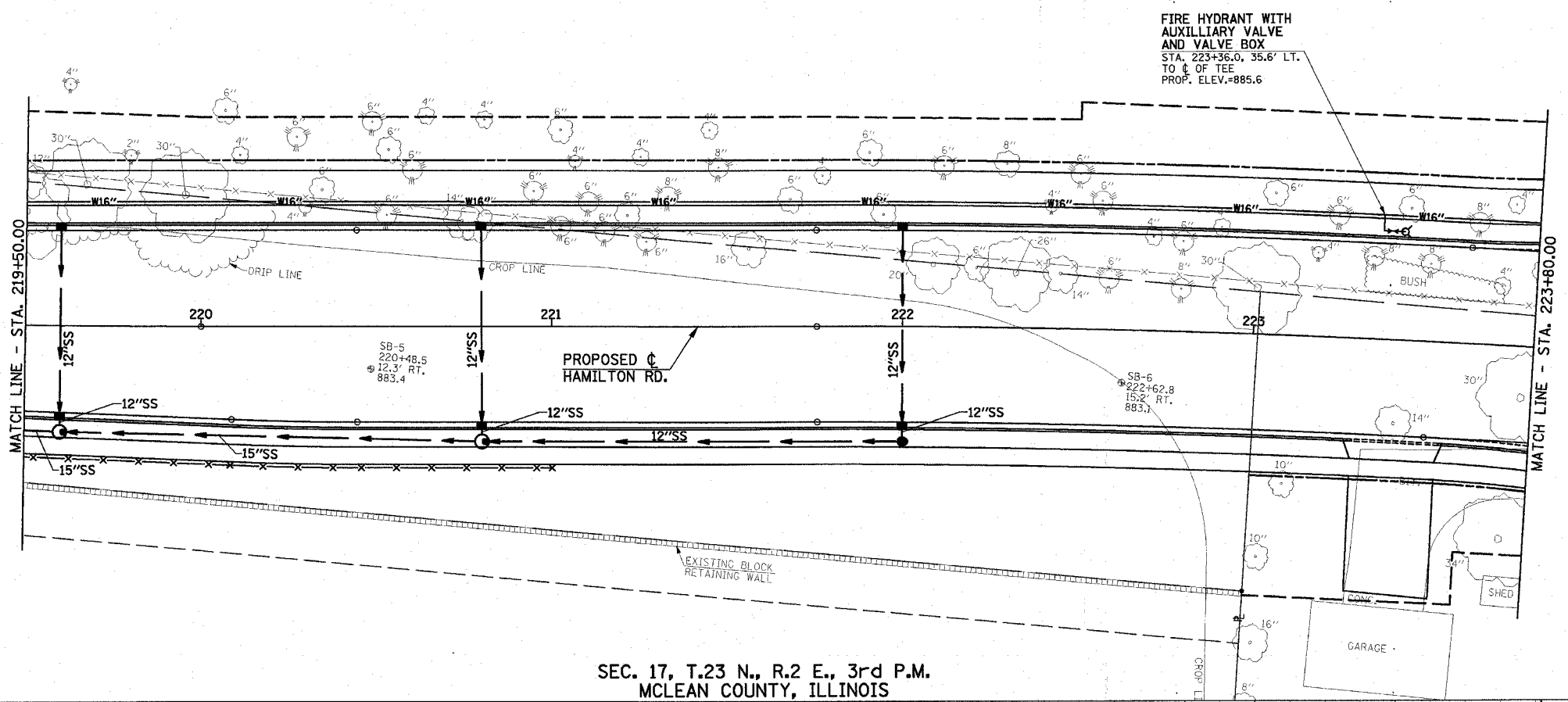
SEC. 17, T.23 N., R.2 E., 3rd P.M.
MCLEAN COUNTY, ILLINOIS

F.A.U. RTE.	SECTION	COUNTY	TOTAL SHEETS	SHEET NO.
6371	93-00295-02-PV	MCLEAN	117	63
STA. 219+50.00		TO STA. 223+80.00		
ILLINOIS				
CONTRACT NO. 87267				



THE PROPOSED ELEVATIONS SHOWN FOR THE FIRE HYDRANTS AND THE WATER VALVES ARE THE FINISHED GRADE SURFACE ELEVATION ADJACENT TO THE HYDRANT OR THE VALVE.

- NOTES
1. ELEVATIONS ARE TOP OF PIPE FOR WATER MAIN.
 2. IT WILL BE NECESSARY TO CONSTRUCT THE WATER MAIN IN VARIOUS STAGES. SEE THE TRAFFIC CONTROL AND MAINTENANCE OF TRAFFIC PLANS FOR STAGING PLAN.
 3. ALL 16" BUTTERFLY VALVE OPERATORS SHALL BE PLACED ON SOUTH SIDE OF WATER MAIN TO AVOID PLACEMENT WITHIN THE PROPOSED BIKE TRAIL.
 4. CONTRACTOR TO PROVIDE FOR FLUSHING AND SAMPLING TAPS EVERY 1200 FEET AND AT EVERY CONNECTION.



SEC. 17, T.23 N., R.2 E., 3rd P.M.
MCLEAN COUNTY, ILLINOIS

