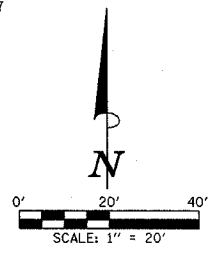


SEC. 17, T.23 N., R.2 E., 3rd P.M.
MCLEAN COUNTY, ILLINOIS

F.A.U. RTE.	SECTION	COUNTY	TOTAL SHEETS	SHEET NO.
6371	93-00295-02-PV	MCLEAN	117	64
STA. 223+80.00		TO STA. 228+20.00		
ILLINOIS				

CONTRACT NO. 87267



THE PROPOSED ELEVATIONS SHOWN FOR THE FIRE HYDRANTS AND THE WATER VALVES ARE THE FINISHED GRADE SURFACE ELEVATION ADJACENT TO THE HYDRANT OR THE VALVE.

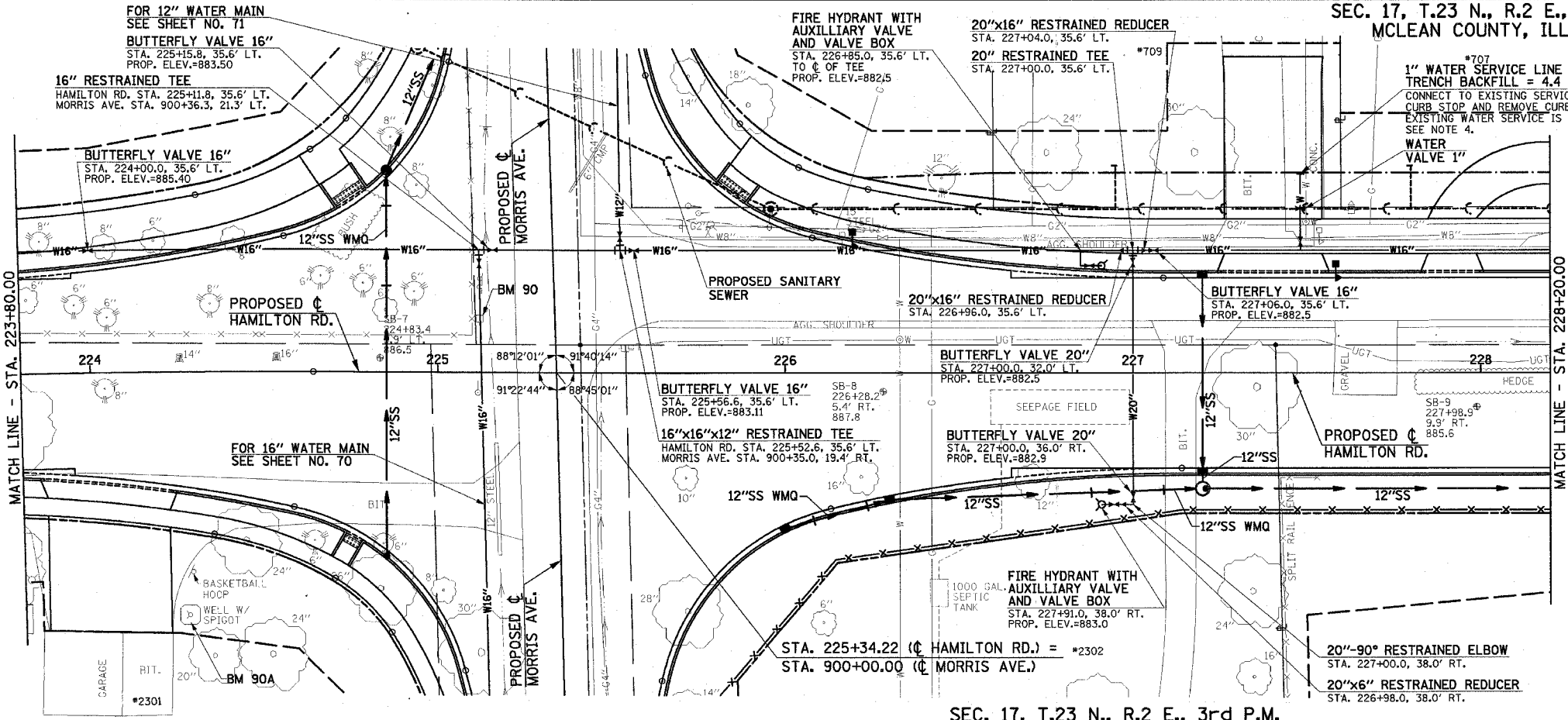
A MINIMUM OF 20 FEET OF RESTRAINED JOINT PIPE IS REQUIRED ON EACH SIDE OF 16" BUTTERFLY VALVES.

- NOTES
- ELEVATIONS ARE TOP OF PIPE FOR WATER MAIN.
 - IT WILL BE NECESSARY TO CONSTRUCT THE WATER MAIN IN VARIOUS STAGES. SEE THE TRAFFIC CONTROL AND MAINTENANCE OF TRAFFIC PLANS FOR STAGING PLAN.
 - ALL 16" BUTTERFLY VALVE OPERATORS SHALL BE PLACED ON SOUTH SIDE OF WATER MAIN TO AVOID PLACEMENT WITHIN THE PROPOSED BIKE TRAIL.
 - CONTRACTOR TO FIELD VERIFY EXISTING WATER SERVICES ALONG HAMILTON RD. CONTRACTOR TO PROVIDE 1" WATER SERVICE LINE, VALVES AND NECESSARY FITTINGS AND HARDWARE FOR CONNECTION TO RESIDENTIAL SERVICES.
 - SEE THE REMOVAL/RELOCATION PLANS FOR THE VARIOUS PAY ITEMS AND THEIR LOCATIONS ALONG THE 8" WATER MAIN TO BE ABANDONED, REMOVED, OR ADJUSTED FROM STA. 225+41.3 TO STA. 241+15.0.
 - CONTRACTOR TO PROVIDE FOR FLUSHING AND SAMPLING TAPS EVERY 1200 FEET AND AT EVERY CONNECTION.

BM 90 - RAILROAD SPIKE IN POWER POLE ON WEST SIDE OF MORRIS AVE. STA. 225+12, 16' LT. ELEV. 886.19

BM 90A - CHISELED "E" ON SOUTH SIDE OF CONCRETE PAD SURROUNDING WELL HYDRANT. STA. 224+30, 70' RT. ELEV. 889.60

DATE	BY	REVISION



SEC. 17, T.23 N., R.2 E., 3rd P.M.
MCLEAN COUNTY, ILLINOIS

DATE	BY	REVISION

