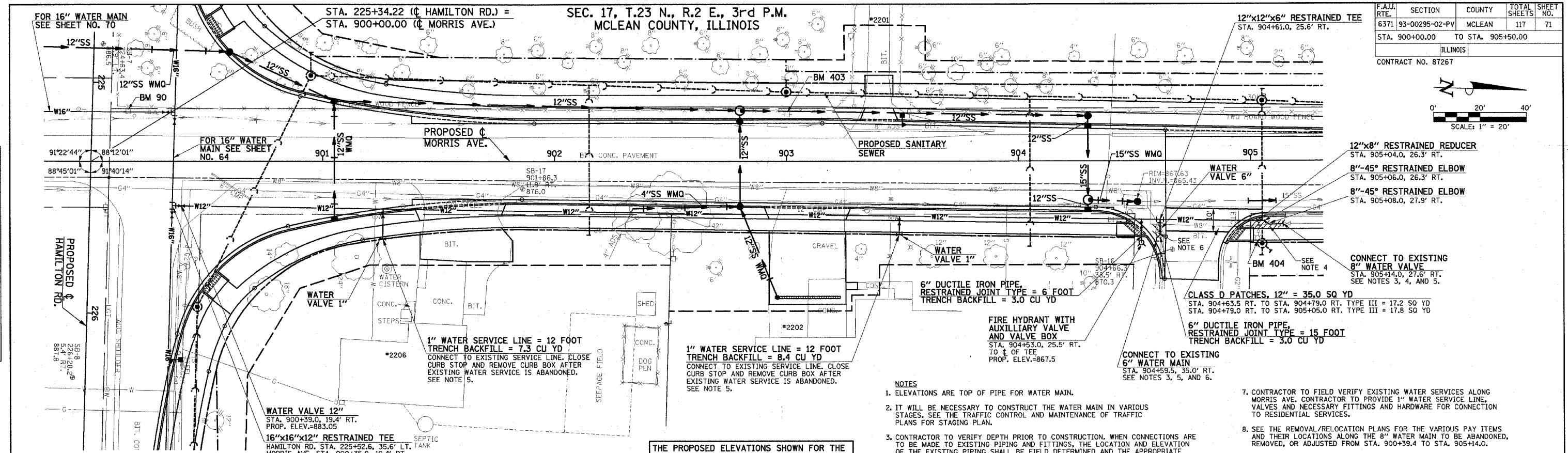
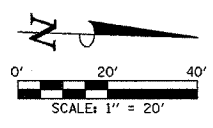


F.A.U. RTE.	SECTION	COUNTY	TOTAL SHEETS	SHEET NO.
6371	93-00295-02-PV	MCLEAN	117	71
STA. 900+00.00		TO STA. 905+50.00		
ILLINOIS				
CONTRACT NO. 87267				



- NOTES**
- ELEVATIONS ARE TOP OF PIPE FOR WATER MAIN.
 - IT WILL BE NECESSARY TO CONSTRUCT THE WATER MAIN IN VARIOUS STAGES. SEE THE TRAFFIC CONTROL AND MAINTENANCE OF TRAFFIC PLANS FOR STAGING PLAN.
 - CONTRACTOR TO VERIFY DEPTH PRIOR TO CONSTRUCTION. WHEN CONNECTIONS ARE TO BE MADE TO EXISTING PIPING AND FITTINGS, THE LOCATION AND ELEVATION OF THE EXISTING PIPING SHALL BE FIELD DETERMINED AND THE APPROPRIATE ADJUSTMENTS MADE.
 - CONTRACTOR TO PROVIDE ALL OTHER PIPING & GASKETS, FITTINGS, AND HARDWARE NECESSARY TO CONNECT TO EXISTING WATER MAIN.
 - REMOVE A JOINT OF EXISTING 8" WATER MAIN ON THE SOUTH SIDE OF THE EXISTING 8" VALVE AT STA. 905+14 AND INSTALL A RESTRAINED PLUG. CONNECT THE NEW WATER MAIN TO THE EXISTING 8" VALVE.
 - THE DOWNTIME ASSOCIATED WITH THE TIE-INS TO THE EXISTING WATER MAIN SHALL BE LIMITED TO A MAXIMUM OF 8 HOURS AND COORDINATED WITH THE OWNER.
 - CONNECT TO THE EXISTING 6" WATER MAIN BY REMOVING A JOINT OF PIPE AND INSTALLING 2 RESTRAINED 6"-45° ELBOWS WITH THRUST BLOCKS (BEARING AREA = 4 SQ FT). INSTALL A RESTRAINED PLUG IN THE EXISTING WATER MAIN WEST OF STA. 904+59.5, 35.0' RT.
 - CONTRACTOR TO FIELD VERIFY EXISTING WATER SERVICES ALONG MORRIS AVE. CONTRACTOR TO PROVIDE 1" WATER SERVICE LINE, VALVES AND NECESSARY FITTINGS AND HARDWARE FOR CONNECTION TO RESIDENTIAL SERVICES.
 - SEE THE REMOVAL/RELOCATION PLANS FOR THE VARIOUS PAY ITEMS AND THEIR LOCATIONS ALONG THE 8" WATER MAIN TO BE ABANDONED, REMOVED, OR ADJUSTED FROM STA. 900+39.4 TO STA. 905+14.0.
 - CONTRACTOR TO PROVIDE FOR FLUSHING AND SAMPLING TAPS EVERY 1200 FEET AND AT EVERY CONNECTION.

**SEC. 17, T.23 N., R.2 E., 3rd P.M.
MCLEAN COUNTY, ILLINOIS**

THE PROPOSED ELEVATIONS SHOWN FOR THE FIRE HYDRANTS AND THE WATER VALVES ARE THE FINISHED GRADE SURFACE ELEVATION ADJACENT TO THE HYDRANT OR THE VALVE.

