

F.A.U. R.T.E.	SECTION	COUNTY	TOTAL SHEETS	SHEET NO.
6371	93-00295-02-PV	MCLEAN	117	89
STA.	TO STA.		ILLINOIS	
CONTRACT NO. 87267				

**SIDEWALK GENERAL NOTES**

THE COST OF CONSTRUCTING THE DEPRESSED CURB AS SHOWN SHALL BE CONSIDERED INCLUDED IN THE COST OF CONSTRUCTING COMBINATION CONCRETE CURB AND GUTTER TYPE B-6.18 AND NO ADDITIONAL COMPENSATION WILL BE ALLOWED.

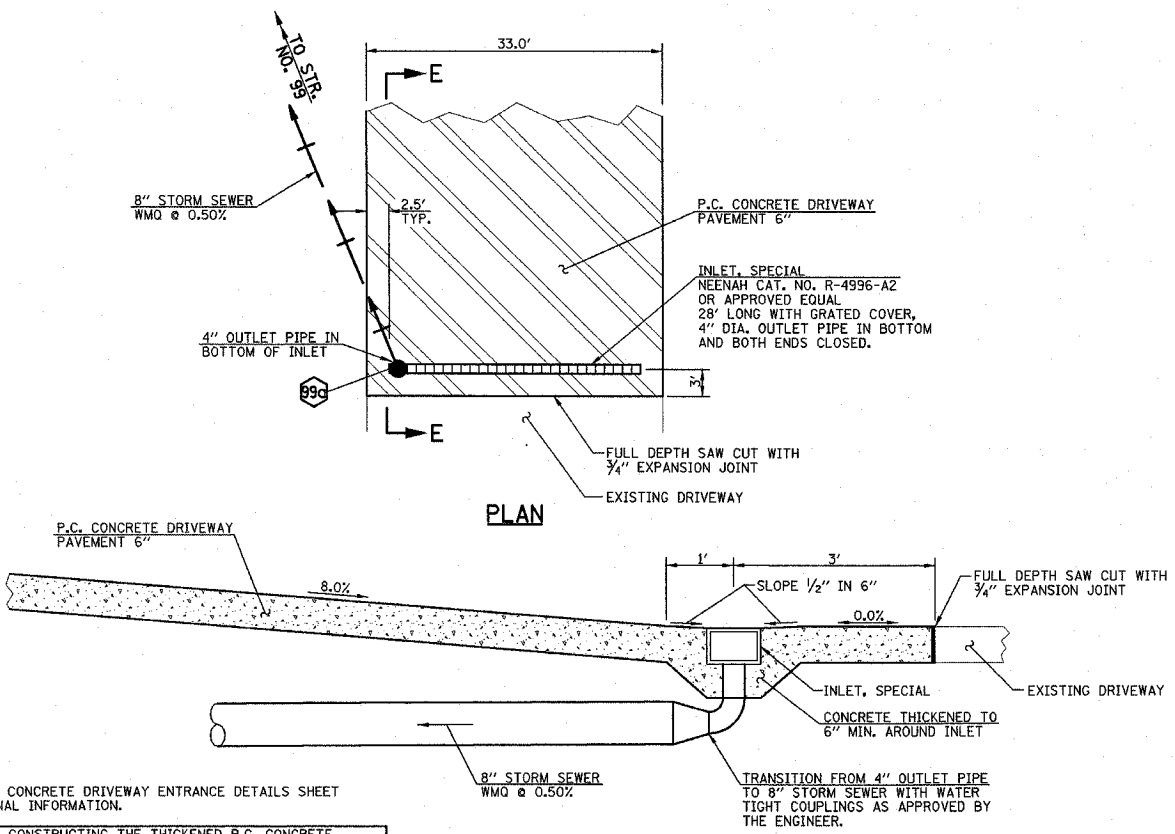
THE COST OF FURNISHING AND INSTALLING THE 3/4" EXPANSION JOINTS AND #6-24" LONG TIE BARS AND THE COST OF CONSTRUCTING THE P.C.C. SIDEWALK THICKNESS TRANSITION, INCLUDING THE ADJACENT CURBING AS SHOWN, SHALL BE INCLUDED IN THE COST OF CONSTRUCTING P.C. CONCRETE SIDEWALK 4" OR 6" AND NO ADDITIONAL COMPENSATION WILL BE ALLOWED.

THE INTEGRALLY COLORED CONCRETE RAMP INCLUDING CURBS AND DETECTABLE WARNINGS SHALL BE CONSTRUCTED IN ACCORDANCE WITH STD. 424001 AND THE SPECIAL PROVISIONS. THIS WORK SHALL NOT BE PAID FOR SEPARATELY, BUT SHALL BE CONSIDERED INCLUDED WITHIN THE CONTRACT UNIT PRICE FOR P.C. CONCRETE SIDEWALK 4" OR 6".

THE NORMAL CROSS SLOPES OF SIDEWALKS SHALL BE 2.0% EXCEPT AT THE RAMP LOCATIONS.

TRANSVERSE GROOVED JOINTS SHALL BE PLACED IN THE P.C. CONCRETE SIDEWALK 4" AT 5' CENTERS AND 3/4" EXPANSION JOINTS AT 100' CENTERS.

TRANSVERSE SAWED JOINTS SHALL BE PLACED IN THE P.C. CONCRETE SIDEWALK 6" AT 5' CENTERS AND 3/4" EXPANSION JOINTS AT 100' CENTERS.

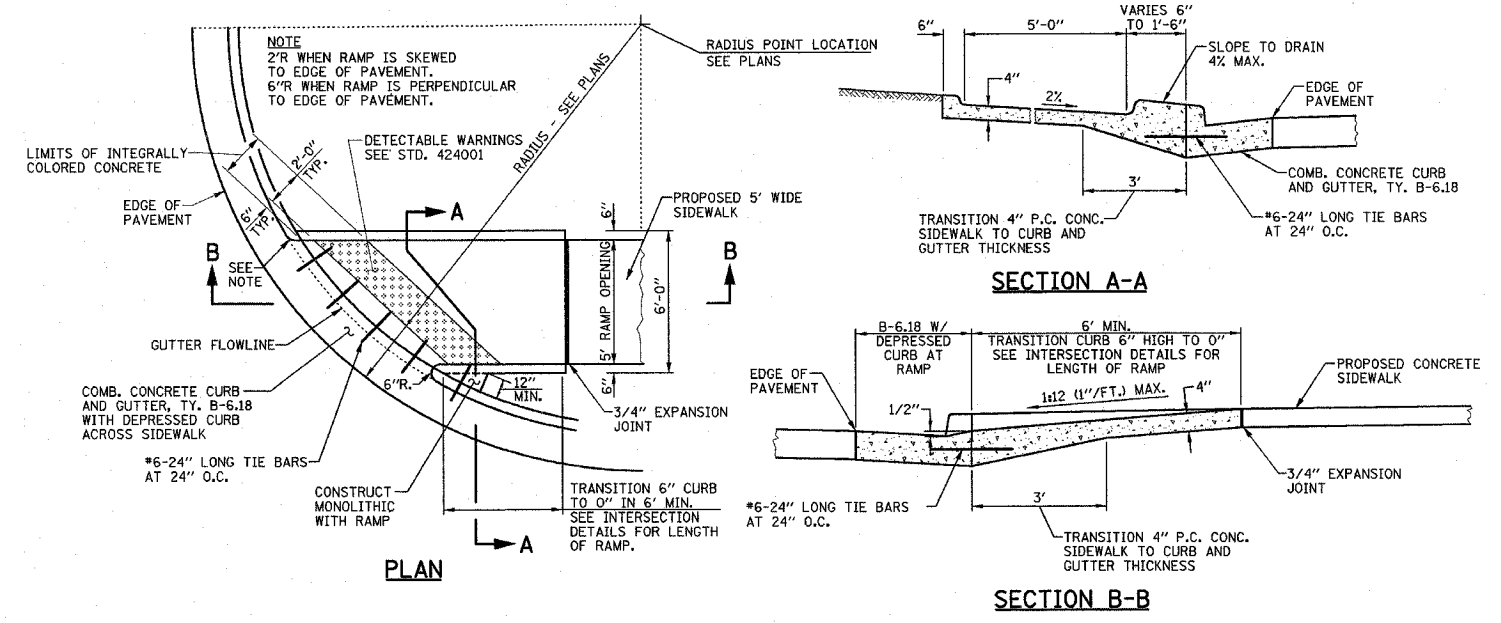


**NOTES**  
SEE THE P.C. CONCRETE DRIVEWAY ENTRANCE DETAILS SHEET FOR ADDITIONAL INFORMATION.

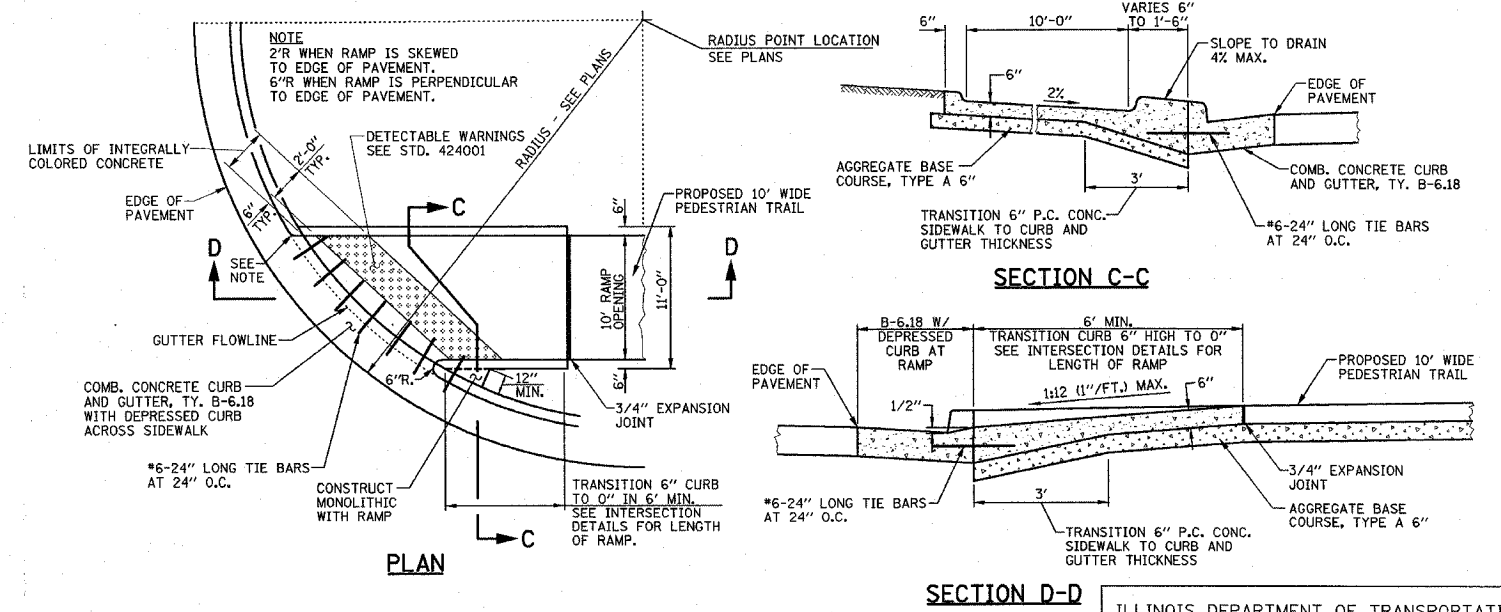
THE COST OF CONSTRUCTING THE THICKENED P.C. CONCRETE DRIVEWAY AROUND THE INLET, SPECIAL AS SHOWN ON SECTION E-E WILL BE CONSIDERED INCIDENTAL TO THE P.C. CONCRETE DRIVEWAY PAVEMENT AND NO ADDITIONAL COMPENSATION WILL BE ALLOWED.

THE COST OF PROVIDING AND INSTALLING THE FITTINGS AND COUPLINGS TO CONNECT THE 4" OUTLET PIPE TO THE 8" STORM SEWER WILL BE CONSIDERED INCIDENTAL TO THE INLET, SPECIAL AND NO ADDITIONAL COMPENSATION WILL BE ALLOWED.

**SECTION E-E**  
**INLET SPECIAL**  
STA. 903+09 RT.



**5' WIDE CONCRETE SIDEWALK RAMP DETAILS**



**PEDESTRIAN TRAIL RAMP DETAILS FOR P.C. CONCRETE SIDEWALK 6 INCH**

ILLINOIS DEPARTMENT OF TRANSPORTATION  
**MISCELLANEOUS DETAILS**  
DATE : 3-05  
DRAWN BY : J.L.B.  
CHECKED BY : R.L.H.  
SCALE : NONE