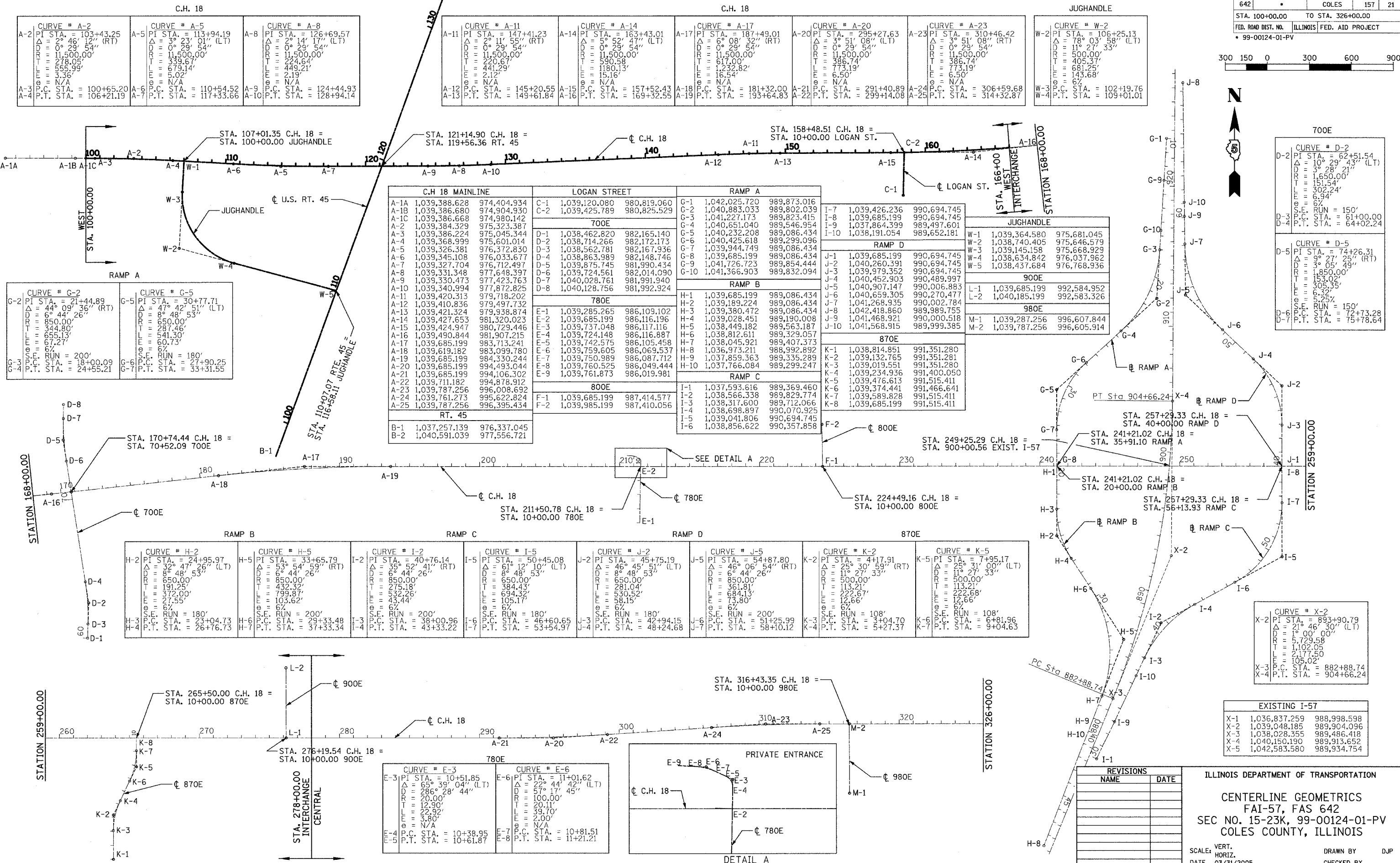
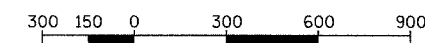


F.A.S. RTE.	SECTION	COUNTY	TOTAL SHEETS	SHEET NO.
642	*	COLES	157	21
STA. 100+00.00		TO STA. 326+00.00		
FED. ROAD DIST. NO.		ILLINOIS FED. AID PROJECT		
* 99-00124-01-PV				



700E

CURVE # D-2	PI STA. = 62+51.54
Δ = 10° 29' 43" (LT)	
D = 1,650.00'	
R = 151.54'	
T = 302.24'	
L = 6.94'	
E = 6.94'	
∅ = 6.94'	
S.E. RUN = 150'	
P.C. STA. = 61+00.00	
P.T. STA. = 64+02.24	

900E

CURVE # D-5	PI STA. = 74+26.31
Δ = 9° 27' 25" (RT)	
D = 1,850.00'	
R = 153.02'	
T = 305.35'	
L = 6.32'	
E = 6.32'	
∅ = 6.32'	
S.E. RUN = 150'	
P.C. STA. = 72+73.28	
P.T. STA. = 75+78.64	

CURVE # X-2

PI STA. = 893+90.79	
Δ = 21° 46' 30" (LT)	
D = 1,102.05'	
R = 5,729.58'	
T = 2,177.50'	
L = 105.02'	
E = 105.02'	
∅ = 105.02'	
P.C. STA. = 882+88.74	
P.T. STA. = 904+66.24	

EXISTING I-57

X-1	1,036,837.259	988,998.598
X-2	1,039,048.185	989,904.096
X-3	1,038,028.355	989,486.418
X-4	1,040,150.190	989,913.652
X-5	1,042,583.580	989,934.754

REVISIONS

NAME	DATE

ILLINOIS DEPARTMENT OF TRANSPORTATION
 CENTERLINE GEOMETRICS
 FAI-57, FAS 642
 SEC NO. 15-23K, 99-00124-01-PV
 COLES COUNTY, ILLINOIS

SCALE: VERT. HORIZ.
 DATE: 03/31/2005

DRAWN BY: DJP
 CHECKED BY:

LAYOUT: DJP 11/23/03
 DRAWN: DJP 11/23/03
 REVIEWED:
 03/31/2005
 P:\CIVIL\57PH2\c-ccc-1.updgn