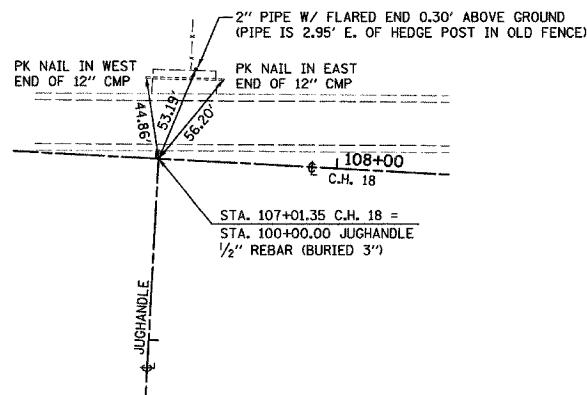


F.A.S. RTE.	SECTION	COUNTY	TOTAL SHEETS	SHEET NO.
642	99-00124-01-PV	COLES	157	24
STA.		TO STA.		
FED. ROAD DIST. NO.		ILLINOIS FED. AID PROJECT		

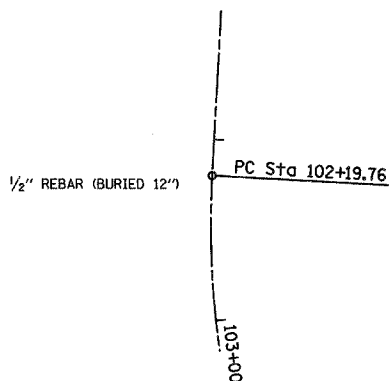
P.O.T.
JUGHANDLE STA.100+00.00

N 1039364.58
E 975681.04



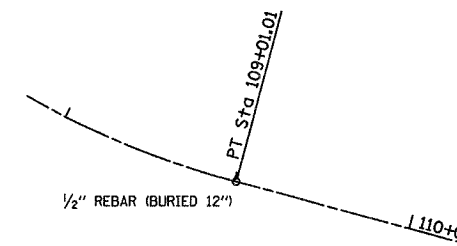
P.C.
JUGHANDLE STA.102+19.76

N 1039145.16
E 975668.93



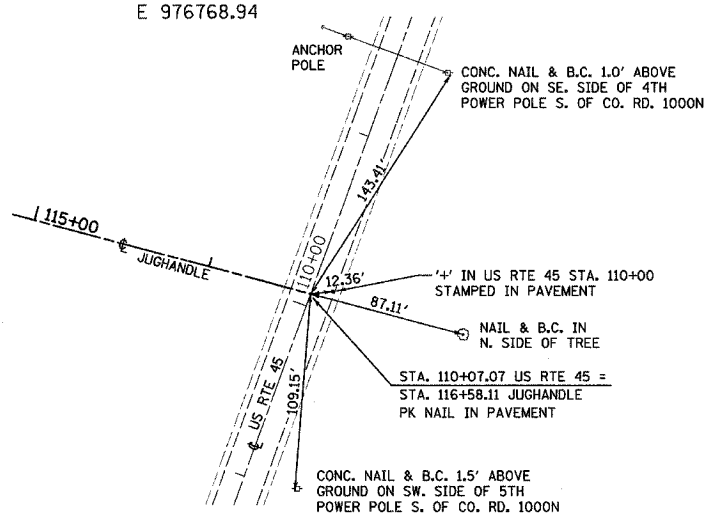
P.T.
JUGHANDLE STA.109+01.01

N 1038634.84
E 976037.96



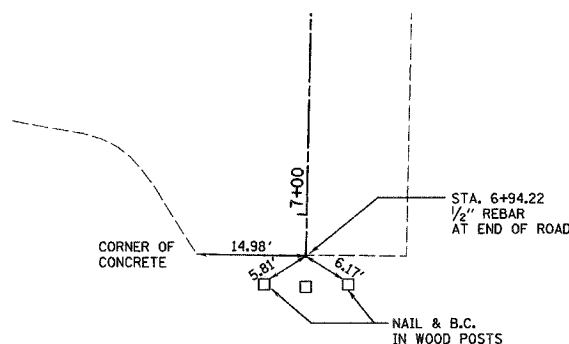
P.O.T.
JUGHANDLE STA.116+58.11

N 1038437.68
E 976768.94



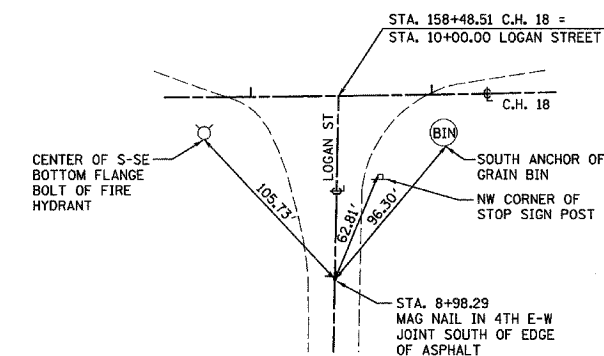
P.O.T.
LOGAN ST. STA.6+94.22

N 1039120.08
E 980819.06



P.O.T.
LOGAN ST. STA.8+98.29

N 1039324.10
E 980823.38



BENCHMARK	DESCRIPTION	STATION	OFFSET	ELEVATION	ROAD
B.M. 500	TOP OF 2" PIPE, 0.3' ABOVE GROUND, 2.9' EAST OF HEDGE POST	107+20	50' LT	702.27	C. H. 18
B.M. 12	S. E. BOLT PAINTED ORANGE ON R. R. SIGNAL FOUNDATION	123+10	104' LT	701.55	C. H. 18
B.M. 600A	TOP CAP BOLT NEXT TO "M" IN MUELLER, 1ST FIRE HYDRANT EAST OF INTERSECTION 620 E./1000 N., SOUTH SIDE OF ROAD	127+44	50' LT	699.58	C. H. 18
B.M. 13	CHISELED SQUARE ON SOUTH SIDE OF LIGHT FOUNDATION AT ENTRANCE TO KAL KAN PARKING LOT	130+57	132' LT	698.82	C. H. 18
B.M. 600B	TOP CAP BOLT NEXT TO "M" IN MUELLER, 2ND FIRE HYDRANT WEST OF AMPAD, S. SIDE OF ROAD	148+45	17' RT	696.79	C. H. 18
B.M. 600C	TOP CAP BOLT NEXT TO "M" IN MUELLER, FIRE HYDRANT EAST SIDE OF EAST ENTRANCE TO AMPAD WAREHOUSE LODGING DOCKS	154+74	14' RT	698.85	C. H. 18
B.M. 15	CHISELED SQUARE ON NORTH SIDE OF GRAIN BIN FOUNDATION	159+05	14' RT	697.35	C. H. 18

REVISIONS	
NAME	DATE

ILLINOIS DEPARTMENT OF TRANSPORTATION

TIE POINTS / BENCHMARKS

SCALE: VERT. N.T.S.
HORIZ. N.T.S.
DATE 04/08/2005

DRAWN BY CAI
CHECKED BY MED