

NOTE: SEE RIGHT OF WAY PLAN SHEETS FOR RIGHT OF WAY AND EASEMENT INFORMATION

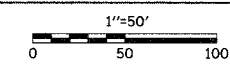
STEEL TRAFFIC BARRIER TERMINAL, TYPE 6	EACH	1
LOCATION		
134+50.07 LT. TO 134+80.07 LT.		

STEEL TRAFFIC BARRIER TERMINAL, TYPE 1 SPECIAL, FLARED	EACH	1
LOCATION		
136+72.50 RT. TO 137+22.50 RT.		
134+80.07 LT. TO 135+30.07 LT.		
TOTAL THIS SHEET		

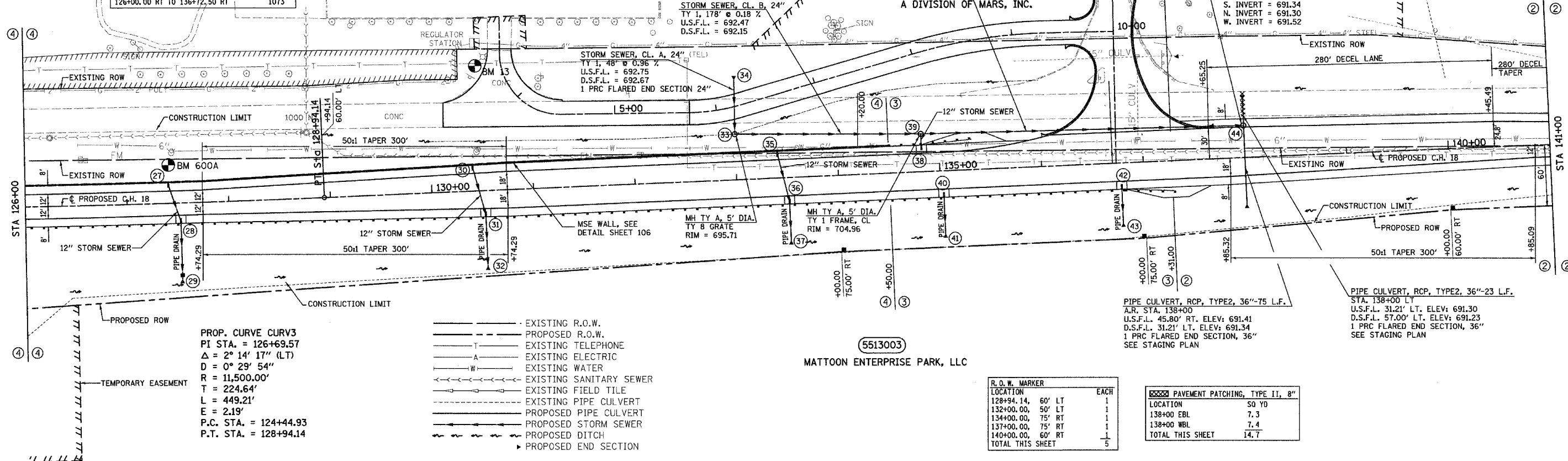
TERMINAL MARKER, DIRECT APPLIED	EACH	1
LOCATION		
137+22.50 RT.		
137+80.00 LT.		
TOTAL THIS SHEET		

STORM SEWER, CL. A, 24"		
TY 2, 312' @ 0.17%		
U.S.F.L. = 692.05		
D.S.F.L. = 691.52		

SEE SHEETS 49-50 FOR COMMERCIAL ENTRANCE DETAILS



F.A.S. RTE.	SECTION	COUNTY	TOTAL SHEETS	SHEET NO.
642	99-00124-01-PV	COLES	157	27
STA. 126+00		TO STA. 141+00		
FED. ROAD DIST. NO.		ILLINOIS FED. AID PROJECT		

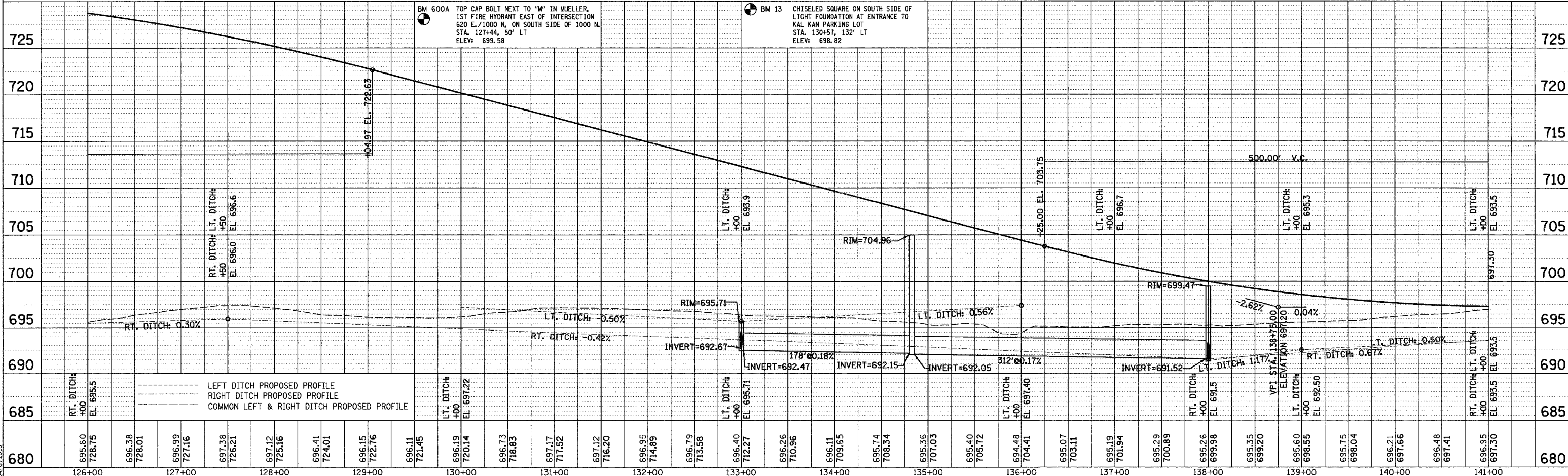


PROP. CURVE CURV3
 PI STA. = 126+69.57
 $\Delta = 2^\circ 14' 17''$ (LT)
 $D = 0^\circ 29' 54''$
 $R = 11,500.00'$
 $T = 224.64'$
 $L = 449.21'$
 $E = 2.19'$
 P.C. STA. = 124+44.93
 P.T. STA. = 128+94.14

- EXISTING R.O.W.
- - - PROPOSED R.O.W.
- - - EXISTING TELEPHONE
- - - EXISTING ELECTRIC
- - - EXISTING WATER
- - - EXISTING SANITARY SEWER
- - - EXISTING FIELD TILE
- - - EXISTING PIPE CULVERT
- - - PROPOSED PIPE CULVERT
- - - PROPOSED STORM SEWER
- - - PROPOSED DITCH
- ▶ PROPOSED END SECTION

R.O.W. MARKER	EACH	
LOCATION		
128+94.14, 60' LT		
132+00.00, 50' LT		
134+00.00, 75' RT		
137+00.00, 75' RT		
140+00.00, 60' RT		
TOTAL THIS SHEET		

PAVEMENT PATCHING, TYPE II, 8"		
LOCATION		
50 YD		
138+00 EBL		
138+00 WBL		
TOTAL THIS SHEET		



DRAWN BY: S.F. CHK'D BY: M.D. TUG PROJ. #1997022-5 11/20/2005