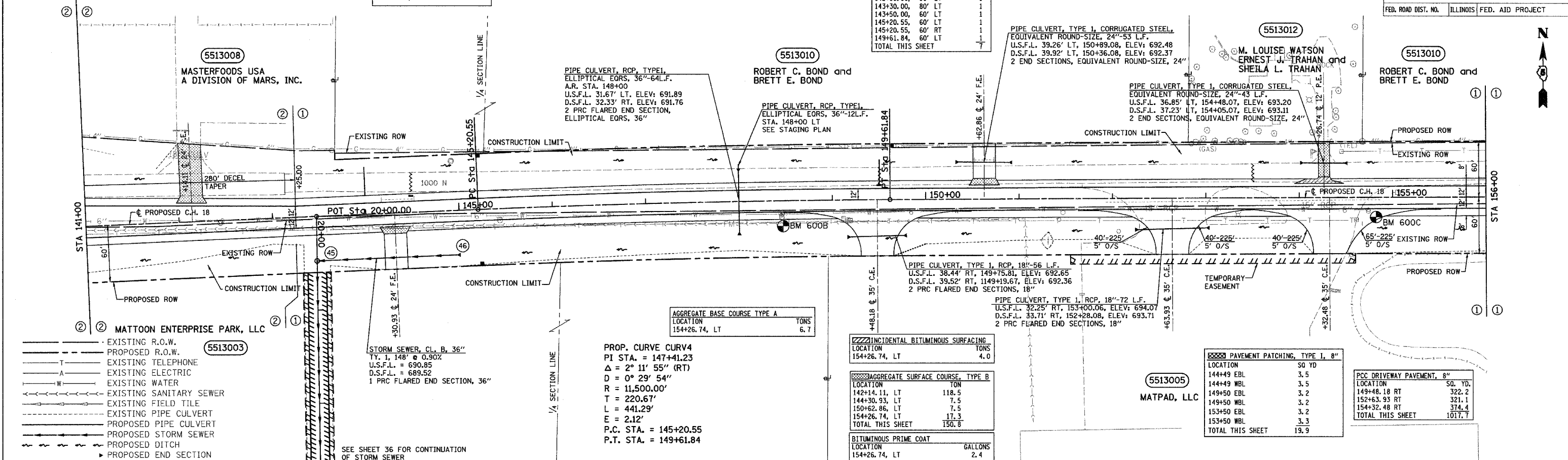
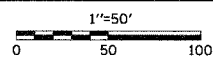


NOTE: SEE RIGHT OF WAY PLAN SHEETS FOR RIGHT OF WAY AND EASEMENT INFORMATION

SURVEY MARKER VAULT		
LOCATION	EACH	
145+24.03, 4.19' RT	1	

R.O.W. MARKER		
LOCATION	EACH	
142+00.00, 50' LT	1	
142+30.00, 80' LT	1	
143+30.00, 80' LT	1	
143+50.00, 60' LT	1	
145+20.55, 60' LT	1	
145+20.55, 60' RT	1	
149+61.84, 60' LT	1	
TOTAL THIS SHEET	7	

F.A.S. RTE.	SECTION	COUNTY	TOTAL SHEETS	SHEET NO.
642	99-00124-01-PV	COLES	157	28
STA. 141+00		TO STA. 156+00		
FED. ROAD DIST. NO.		ILLINOIS FED. AID PROJECT		



- EXISTING R.O.W.
- - - PROPOSED R.O.W.
- T EXISTING TELEPHONE
- A EXISTING ELECTRIC
- W EXISTING WATER
- EXISTING SANITARY SEWER
- EXISTING FIELD TILE
- - - EXISTING PIPE CULVERT
- - - PROPOSED PIPE CULVERT
- - - PROPOSED STORM SEWER
- - - PROPOSED DITCH
- ▶ PROPOSED END SECTION

STORM SEWER, CL. B, 36"	
TY. 1, 148" @ 0.90%	
U.S.F.L. = 690.85	
D.S.F.L. = 689.52	
1 PRC FLARED END SECTION, 36"	

PROP. CURVE CURV4	
PI STA. = 147+41.23	
Δ = 2° 11' 55" (RT)	
D = 0° 29' 54"	
R = 11,500.00'	
T = 220.67'	
L = 441.29'	
E = 2.12'	
P.C. STA. = 145+20.55	
P.T. STA. = 149+61.84	

AGGREGATE BASE COURSE TYPE A	
LOCATION	TONS
154+26.74, LT	6.7

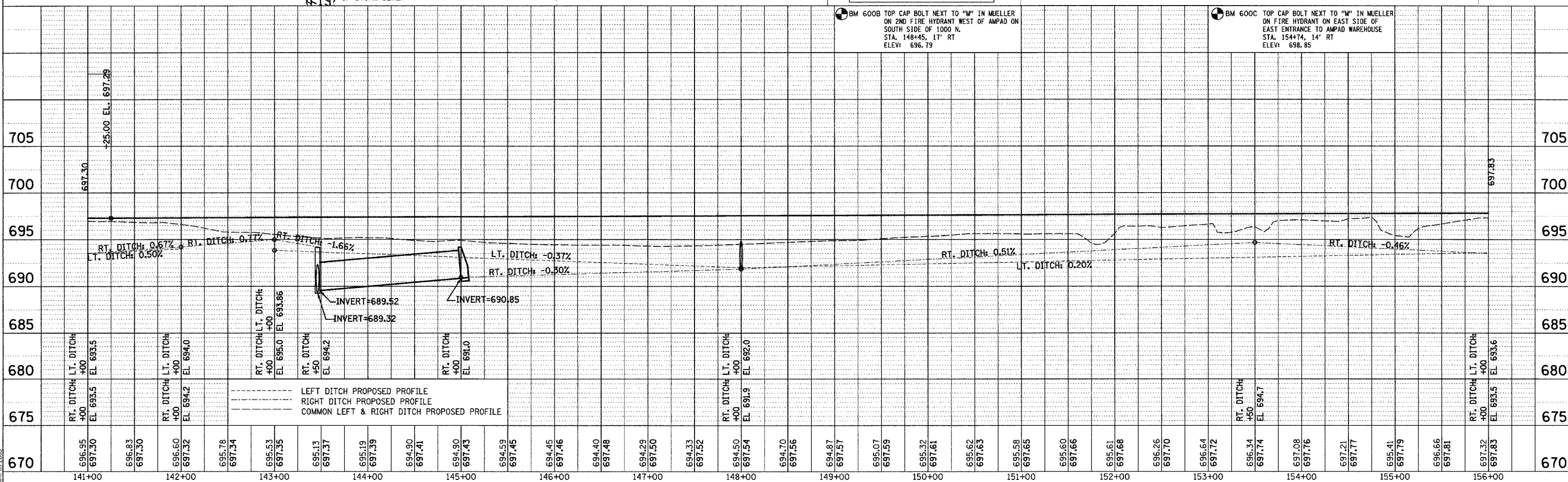
INCIDENTAL BITUMINOUS SURFACING	
LOCATION	TONS
154+26.74, LT	4.0

AGGREGATE SURFACE COURSE, TYPE B	
LOCATION	TONS
142+14.11, LT	118.5
144+30.93, LT	7.5
150+62.86, LT	7.5
154+26.74, LT	17.3
TOTAL THIS SHEET	150.8

BITUMINOUS PRIME COAT	
LOCATION	GALLONS
154+26.74, LT	2.4

PAVEMENT PATCHING, TYPE I, 8"	
LOCATION	SQ YD
144+49 EBL	3.5
144+49 WBL	3.5
149+50 EBL	3.2
149+50 WBL	3.2
153+50 EBL	3.2
153+50 WBL	3.3
TOTAL THIS SHEET	19.9

PCC DRIVEWAY PAVEMENT, 8"	
LOCATION	SQ. YD.
149+48.18 RT	322.2
152+63.93 RT	321.1
154+32.48 RT	374.4
TOTAL THIS SHEET	1017.7



LEFT DITCH PROPOSED PROFILE  
 RIGHT DITCH PROPOSED PROFILE  
 COMMON LEFT & RIGHT DITCH PROPOSED PROFILE

BM 600B TOP CAP BOLT NEXT TO "M" IN MUELLER ON 2ND FIRE HYDRANT WEST OF AMPAD ON SOUTH SIDE OF 1000 N. STA. 148+45, 17' RT ELEV: 696.79

BM 600C TOP CAP BOLT NEXT TO "M" IN MUELLER ON FIRE HYDRANT ON EAST SIDE OF EAST ENTRANCE TO AMPAD WAREHOUSE STA. 154+74, 14' RT ELEV: 698.85

DRAWN BY: S.F. CHOI  
 CHECKED BY: M.D. TULLOCH  
 DATE: 11/17/2005