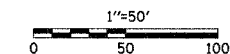


NOTE: SEE RIGHT OF WAY PLAN SHEETS FOR RIGHT OF WAY AND EASEMENT INFORMATION



F.A.S. RTE.	SECTION	COUNTY	TOTAL SHEETS	SHEET NO.
642	99-00124-01-PV	COLES	157	30
STA. 100+00		TO STA. 106+00		
FED. ROAD DIST. NO.		ILLINOIS	FED. AID PROJECT	

S. E. = 6.00%  
 SUPERELEVATION TRANSITIONS:  
 -1.5% TO 6.0% RT STA 100+82.26 TO RT STA 102+69.76  
 -1.5% TO -6.0% LT STA 101+57.26 TO LT STA 102+69.76  
 -6.0% TO -1.5% RT STA 108+51.01 TO RT STA 109+63.51  
 6.0% TO -1.5% RT STA 108+51.01 TO RT STA 110+38.51

PIPE CULVERTS, RCP, TYPE I,  
 ELLIPTICAL EQRS, 36"-56" L.F.  
 U.S.F.L. 24.23' RT, 104+84.76 ELEV: 693.97  
 D.S.F.L. 24.68' LT, 105+11.71 ELEV: 693.27  
 2' PRC FLARED END SECTIONS,  
 ELLIPTICAL EQRS, 36"

COMBINATION CONCRETE CURB & GUTTER TYPE B-6, 24

LOCATION	LIN. FT
100+24.98 LT TO 100+74.03 RT	91.3
100+51.00 RT TO 101+23.17 RT	115.7
TOTAL THIS SHEET	207.0

AGGREGATE SURFACE COURSE, TYPE B

LOCATION	TON
106+00.00, LT	7.5

R. O. W. MARKER

LOCATION	EACH
101+00.00, 75' RT	1
102+50.00, 60' RT	1
TOTAL THIS SHEET	2

- EXISTING R.O.W.
- - - PROPOSED R.O.W.
- T EXISTING TELEPHONE
- A EXISTING ELECTRIC
- W EXISTING WATER
- - - - - EXISTING SANITARY SEWER
- - - - - EXISTING FIELD TILE
- - - - - EXISTING PIPE CULVERT
- - - - - PROPOSED PIPE CULVERT
- - - - - PROPOSED STORM SEWER
- - - - - PROPOSED DITCH
- ▶ PROPOSED END SECTION

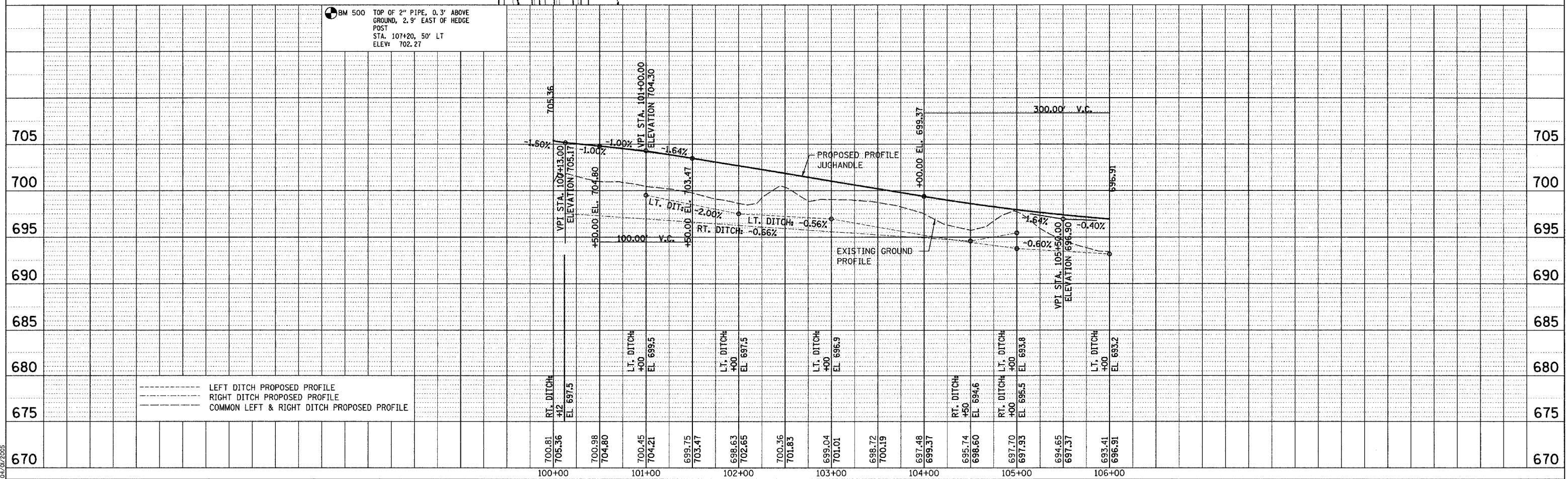
5513004  
 FRED HARTBANK and  
 KAREN HARTBANK

5513002  
 SUSANNE K. SCHNEIDER and  
 JOSEPHINE A. GUSS

5513001  
 ST. JOHN'S LUTHERAN  
 CHURCH OF MATTOON

PROP. CURVE CURVE1-45  
 PI STA. = 106+25.13  
 $\Delta = 78^\circ 03' 58''$  (LT)  
 D = 11' 27' 33"  
 R = 500.00'  
 T = 405.37'  
 L = 681.25'  
 E = 143.68'  
 P.C. STA. = 102+19.76  
 P.T. STA. = 109+01.01  
 $e = 6\%$   
 ATTAIN S.E. STA. 101+69.76 TO 103+19.76  
 REMOVE S.E. STA. 108+01.01 TO 109+51.01

BM 500 TOP OF 2" PIPE, 0.3' ABOVE GROUND, 2.9' EAST OF HEDGE POST  
 STA. 107+20, 50' LT  
 ELEV: 702.27



--- LEFT DITCH PROPOSED PROFILE  
 --- RIGHT DITCH PROPOSED PROFILE  
 --- COMMON LEFT & RIGHT DITCH PROPOSED PROFILE

DRAWN BY: S.J.F.  
 CHECKED BY: M.E.D.  
 TUC PROJ. #1597022-5  
 SHEET PLOT: P1-W-0501  
 5/12/2025