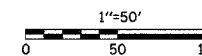


NOTE: SEE RIGHT OF WAY PLAN SHEETS FOR RIGHT OF WAY AND EASEMENT INFORMATION



F.A.S. RTE.	SECTION	COUNTY	TOTAL SHEETS	SHEET NO.
642	99-00124-01-PV	COLES	157	32
STA. 97+50		TO STA. 102+50		
FED. ROAD DIST. NO.		ILLINOIS		FED. AID PROJECT

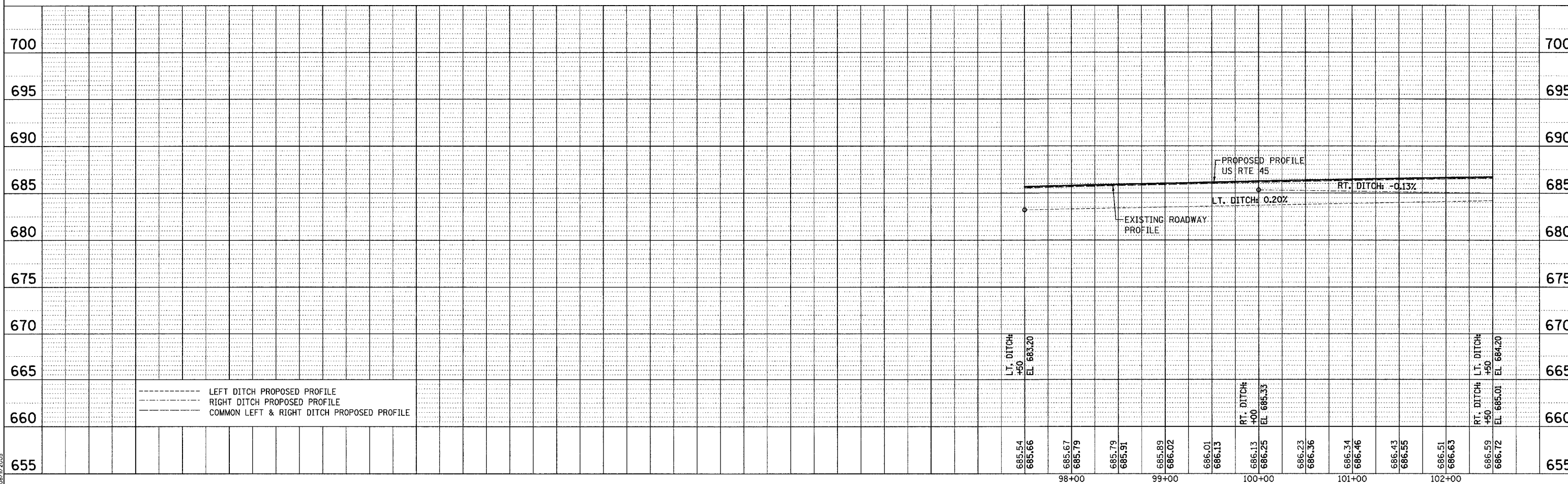
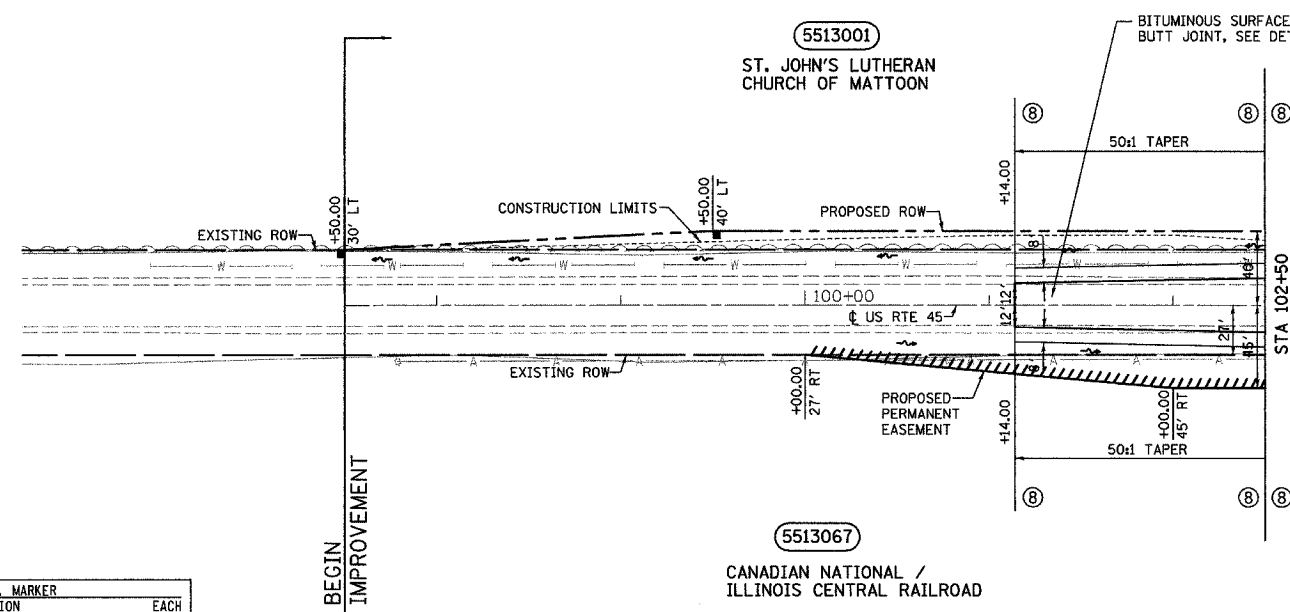
BIT. CONC. BASE COURSE, SUPERPAVE, 9"	
LOCATION	SO. YD.
101+14.00 LT TO 102+50.00 LT	31.1
101+14.00 RT TO 102+50.00 RT	31.9
TOTAL THIS SHEET	63.0

SUBBASE GRANULAR MATERIAL, TYPE B, 4"	
LOCATION	SO. YD.
101+14.00 LT TO 102+50.00 LT	31.1
101+14.00 RT TO 102+50.00 RT	31.9
TOTAL THIS SHEET	63.0

STRIP REFLECTIVE CRACK CONTROL	
LOCATION	FOOT
101+14.00 LT TO 102+50.00 LT	136
101+14.00 RT TO 102+50.00 RT	136
TOTAL THIS SHEET	272

- — — — — EXISTING R.O.W.
- — — — — PROPOSED R.O.W.
- T — — — — EXISTING TELEPHONE
- A — — — — EXISTING ELECTRIC
- W — — — — EXISTING WATER
- S — — — — EXISTING SANITARY SEWER
- F — — — — EXISTING FIELD TILE
- C — — — — EXISTING PIPE CULVERT
- P — — — — PROPOSED PIPE CULVERT
- S — — — — PROPOSED STORM SEWER
- D — — — — PROPOSED DITCH
- ▶ — — — — PROPOSED END SECTION

R.O.W. MARKER		
LOCATION		EACH
97+50.00, 30' LT		1
99+50.00, 40' LT		1
TOTAL THIS SHEET		2



DRAWN BY: SUP  
 TUG PROJ: W397022-5  
 SHEET: PR-W-001  
 09/17/2005