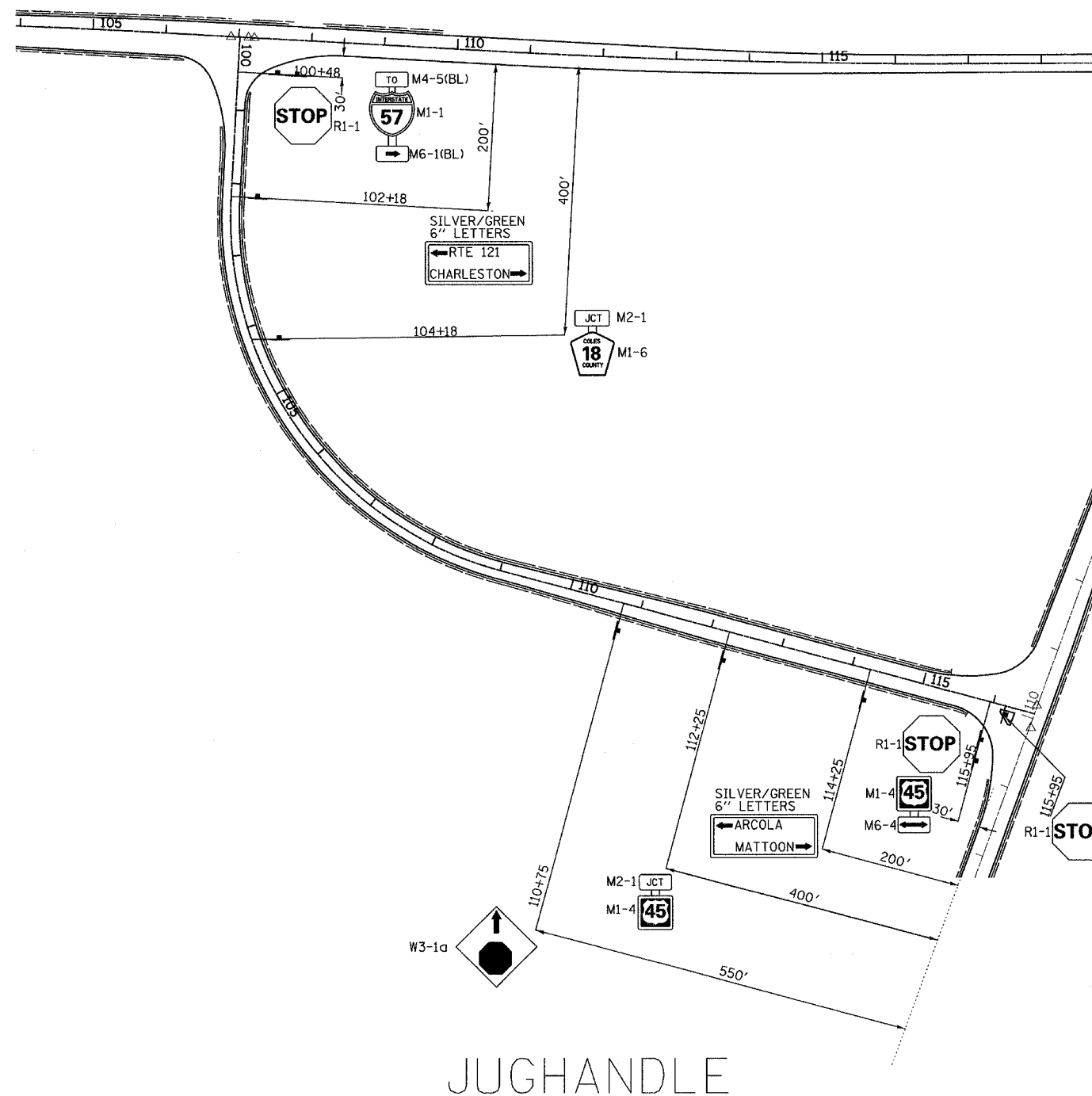
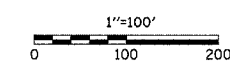


F.A.S. RTE.	SECTION	COUNTY	TOTAL SHEETS	SHEET NO.
642	99-00124-01-PV	COLES	157	56
STA.		TO STA.		
FED. ROAD DIST. NO.		ILLINOIS	FED. AID PROJECT	

STATION	SIDE	SIGN TYPE	DESCRIPTION	SIGN PANEL	SIGN PANEL	NUMBER OF POSTS EACH	TELESCOPING STEEL SIGN SUPPORT FOOT
				TYPE 1 SQ FT	TYPE 2 SQ FT		
100+48	LT	R1-1	STOP	6.3		1	16
100+48	LT	M4-5(BL)	TO	2.0		1	20
		M1-1	I-57	4.0			
		M6-1(BL)	DIRECTIONAL	2.2			
102+18	LT	D1-2	DIRECTIONAL		15.5	2	33
104+18	LT	M2-1	JUNCTION	2.0		1	17
		M1-6	COUNTY HIGHWAY 18	4.0			
110+75	RT	W3-1a	STOP AHEAD	6.3		1	16
112+25	RT	M2-1	JUNCTION	2.0		1	17
		M1-4	US 45	4.0			
114+25	RT	D1-2	DIRECTIONAL		12.7	2	33
115+95	RT	R1-1	STOP	6.3		1	16
115+95	RT	M1-4	US 45	4.0		1	18
		M6-4	DIRECTIONAL	2.2			
116+25	RT	R1-1	STOP	6.3		1	17
TOTALS				51.6	28.2	12	203



JUGHANDLE



REVISIONS	
NAME	DATE

ILLINOIS DEPARTMENT OF TRANSPORTATION

SIGNING PLAN

SCALE: VERT. 1" = 100'
 HORIZ. 1" = 100'
 DATE 04/01/2005

DRAWN BY RLH
 CHECKED BY MED

TUG PROJ #197022-5
 \SHEETS\DWG.dgn
 04/01/2005