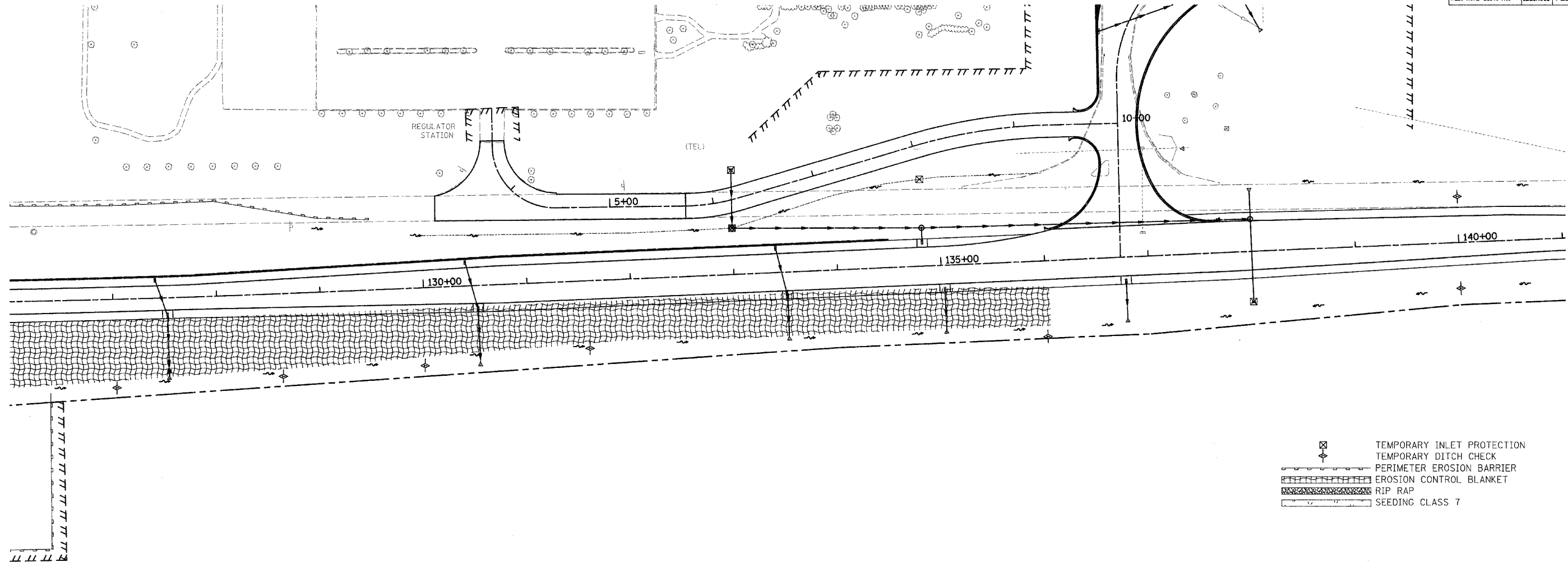


F.A.S. RTE.	SECTION	COUNTY	TOTAL SHEETS	SHEET NO.
642	99-00124-01-PV	COLES	157	66
STA. 126+00		TO STA. 141+00		
FED. ROAD DIST. NO.	ILLINOIS	FED. AID PROJECT		



- ⊠ TEMPORARY INLET PROTECTION
- ⊕ TEMPORARY DITCH CHECK
- ▬ PERIMETER EROSION BARRIER
- ▨ EROSION CONTROL BLANKET
- ▩ RIP RAP
- ▭ SEEDING CLASS 7

▨ EROSION CONTROL BLANKET	
STATION TO STATION	SQ YD
126+00 RT - 136+00 RT	5803.3

⊕ TEMPORARY DITCH CHECKS	
LOCATION	EACH
127+00, RT	1
128+50, RT	1
130+00, RT	1
131+50, RT	1
136+00, RT	1
140+00, LT	1
140+00, RT	1
TOTAL THIS SHEET	7

▬ PERIMETER EROSION BARRIER	
STATION TO STATION	LIN FT
126+00 RT - 126+43 RT	43.6
126+00 LT - 129+50 LT	349.9
126+43 RT - 126+45 RT	154.2
TOTAL THIS SHEET	547.7

⊠ INLET AND PIPE PROTECTION	
STATION	EACH
133+00, LT	1
133+01, LT	1
133+07, LT	1
134+83, LT	1
138+00, RT	1
TOTAL ON THIS SHEET	5

- INTENDED SEQUENCE**
- 1) PLACE PERIMETER EROSION CONTROL BARRIER PRIOR TO COMMENCEMENT OF ANY WORK. SEE STD. 280001
  - 2) CONSTRUCT EARTHWORK, DITCHES FIRST. (MAXIMUM 10 ACRES DISTURBED AT ONE TIME PRIOR TO SEEDING. SEE ART. 202 & 280)
  - 3) PLACE AND MAINTAIN TEMPORARY AND PERMANENT EROSION CONTROLS AS WORK PROGRESSES, SEED EVERY 7 DAYS. SEE ART. 280
  - 4) FINAL SHAPE, GRADE, AND PAVE ROADWAY
  - 5) PLACE REMAINING PERMANENT EROSION CONTROLS.

REVISIONS	
NAME	DATE

ILLINOIS DEPARTMENT OF TRANSPORTATION

**EROSION CONTROL PLAN**

SCALE: VERT. \_\_\_\_\_  
 HORIZ. 1" = 50'  
 DATE 04/01/2005

DRAWN BY RLH  
 CHECKED BY MED

TUC PROJ. #13197022-5  
 ...SHEET EROSION-W.dgn  
 04/01/2005