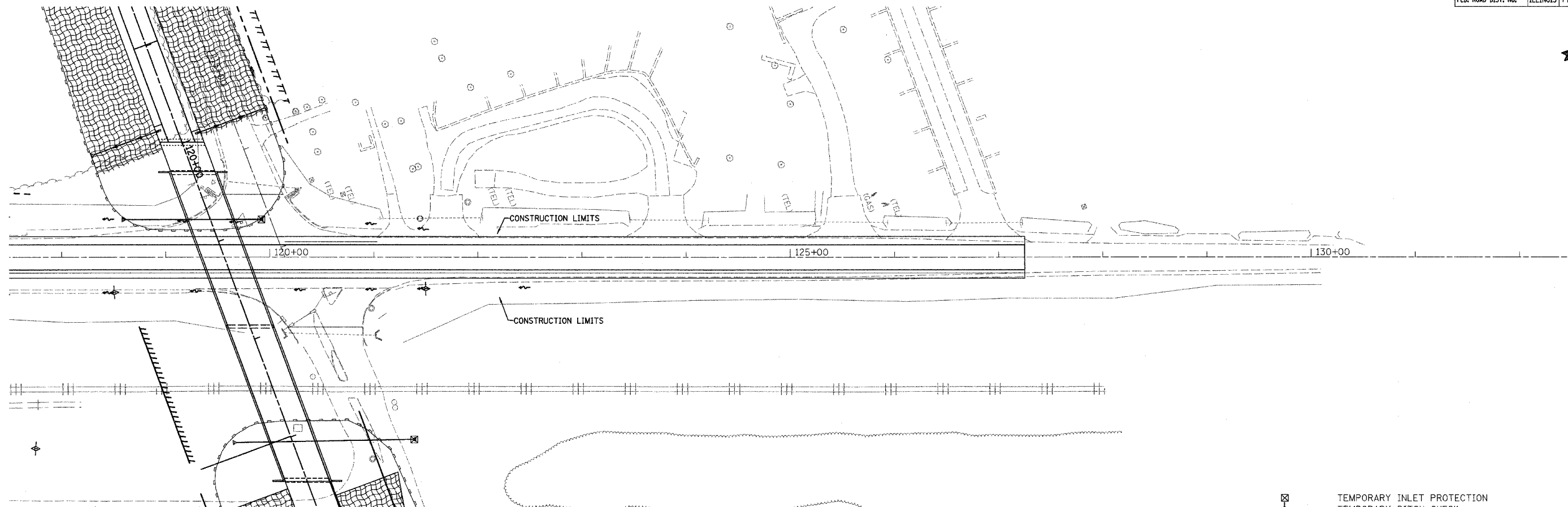


F.A.S. RTE.	SECTION	COUNTY	TOTAL SHEETS	SHEET NO.
642	99-00124-01-PV	COLES	157	71
STA. 117+50		TO STA. 132+50		
FED. ROAD DIST. NO.	ILLINOIS	FED. AID PROJECT		



- TEMPORARY INLET PROTECTION
- TEMPORARY DITCH CHECK
- PERIMETER EROSION BARRIER
- EROSION CONTROL BLANKET
- RIP RAP
- SEEDING CLASS 7

TEMPORARY DITCH CHECKS	
LOCATION	EACH
118+50, RT	1
121+50, RT	1
TOTAL THIS SHEET	2

INTENDED SEQUENCE

- 1) PLACE PERIMETER EROSION CONTROL BARRIER PRIOR TO COMMENCEMENT OF ANY WORK. SEE STD. 280001
- 2) CONSTRUCT EARTHWORK, DITCHES FIRST. (MAXIMUM 10 ACRES DISTURBED AT ONE TIME PRIOR TO SEEDING. SEE ART. 202 & 280)
- 3) PLACE AND MAINTAIN TEMPORARY AND PERMANENT EROSION CONTROLS AS WORK PROGRESSES, SEED EVERY 7 DAYS. SEE ART. 280
- 4) FINAL SHAPE, GRADE, AND PAVE ROADWAY
- 5) PLACE REMAINING PERMANENT EROSION CONTROLS.

REVISIONS	
NAME	DATE

ILLINOIS DEPARTMENT OF TRANSPORTATION

EROSION CONTROL PLAN

SCALE: VERT. _____
 HORIZ. 1" = 50'
 DATE 04/01/2005

DRAWN BY RLH
 CHECKED BY MED

TUG PROJ. #9197022-5
 SHEET EROSION-W.dgn
 04/01/2005