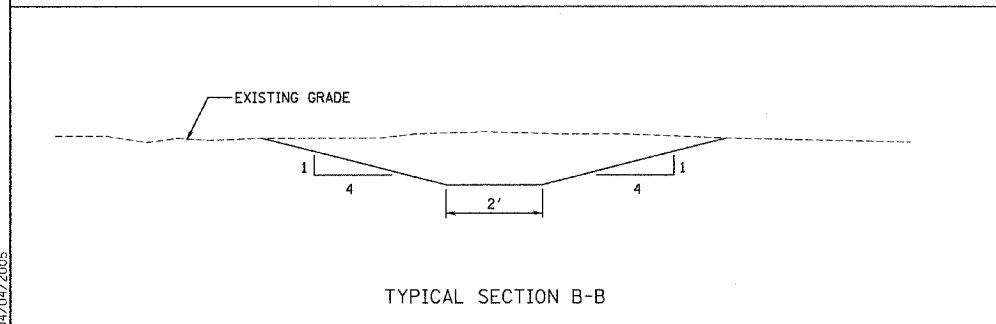
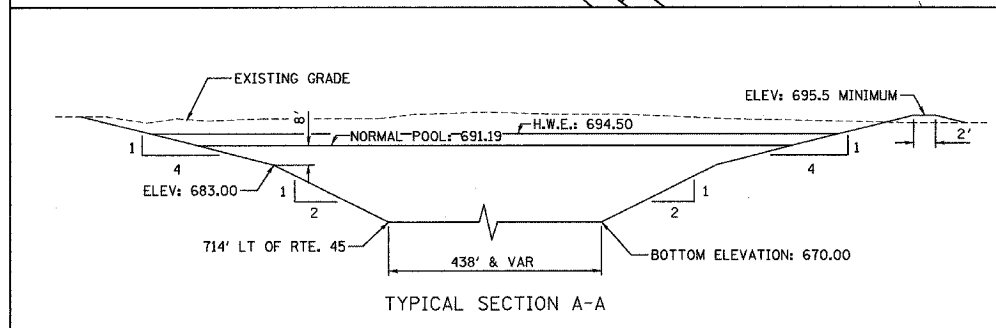
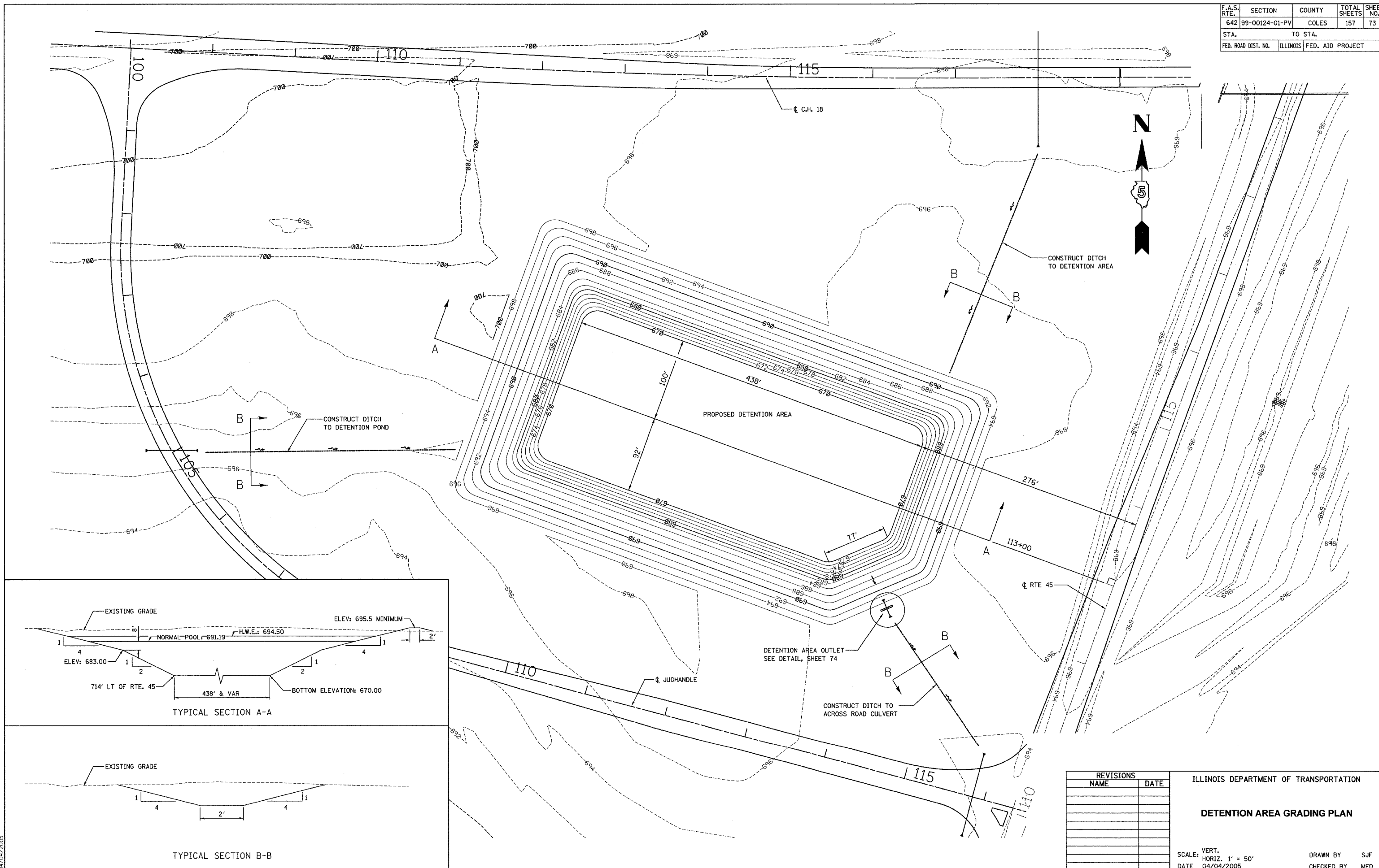


F.A.S. RTE.	SECTION	COUNTY	TOTAL SHEETS	SHEET NO.
642	99-00124-01-PV	COLES	157	73
STA.	TO STA.			
FED. ROAD DIST. NO.	ILLINOIS	FED. AID PROJECT		



REVISIONS	
NAME	DATE

ILLINOIS DEPARTMENT OF TRANSPORTATION  
**DETENTION AREA GRADING PLAN**

SCALE: VERT. 1" = 50'  
 HORIZ. 1" = 50'  
 DATE 04/04/2005  
 DRAWN BY SJF  
 CHECKED BY MED

T:\C PROJ #3187022-5  
 \S\SHEET\DETENTION.dgn  
 04/04/2005