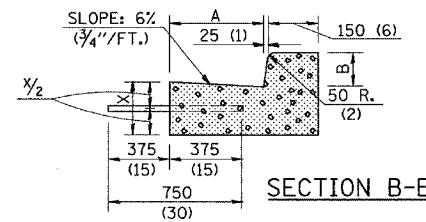
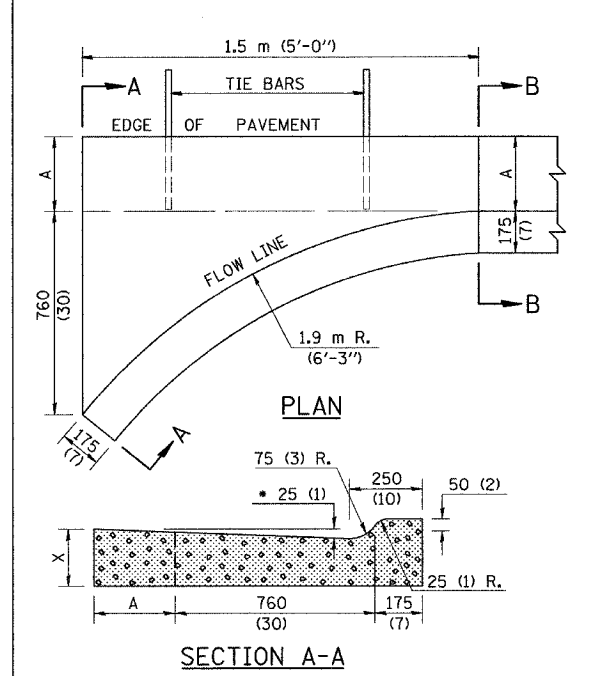


F.A.S. RTE.	SECTION	COUNTY	TOTAL SHEETS	SHEET NO.
642	99-00124-01-PV	COLES	157	74
STA.	TO STA.			
FED. ROAD DIST. NO.	ILLINOIS	FED. AID PROJECT		

### DETAIL OF SPECIAL INLET FOR COMBINATION CONCRETE CURB AND GUTTER (BARRIER CURB)



\* NOTE: INCREASE TO 50 mm (2") WHERE IN THE PLANS IT IS SPECIFIED THAT THESE SPECIAL INLETS ARE TO BE CONSTRUCTED AS OUTLETS. ALL OUTLET LOCATIONS WILL BE CONFIRMED BY THE ENGINEER.

CONVERSION	B-15.30 (B-6.12)	B-22.30 (B-9.12)	B-15.45 (B-6.18)	B-22.45 (B-9.18)	B-15.60 (B-6.24)	B-22.60 (B-9.24)
A	300	300	300	300	450	450
B	150	150	225	225	150	150
X	225	250	225	250	225	250
m <sup>2</sup>	0.28	0.32	0.29	0.32	0.34	0.37
(CU. YDS.)	(0.37)	(0.42)	(0.38)	(0.42)	(0.44)	(0.49)
CLASS SI CONCRETE (OUTLETS)	(0.45)	(0.50)	(0.51)	(0.56)	(0.52)	(0.57)

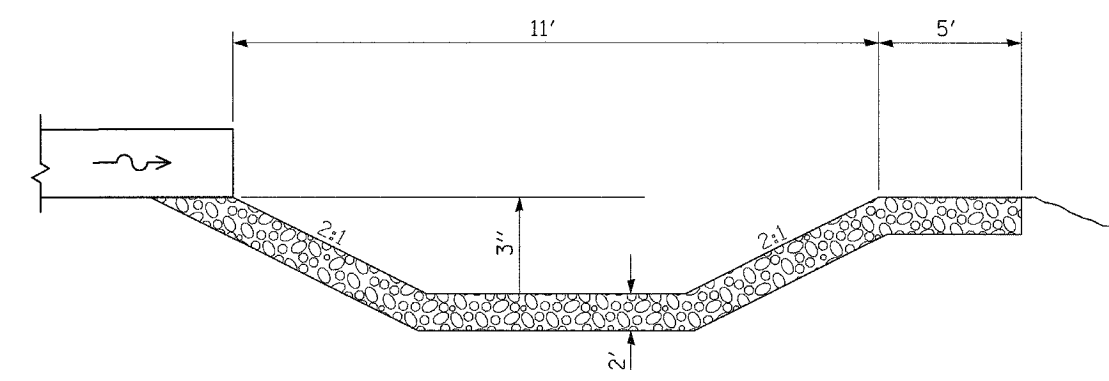
#### GENERAL NOTES

1. CLASS SI CONCRETE SHALL BE USED THROUGHOUT.
  2. TIE BARS SHALL BE NO. 20 (NO. 6) AT 600 mm (24") CENTERS UNLESS OTHERWISE SHOWN. SPECIAL INLETS AND OUTLETS SHALL BE TIED TO THE PAVEMENT IN ACCORDANCE WITH DETAILS FOR LONGITUDINAL CONSTRUCTION JOINT SHOWN ON STANDARD 420001.
  3. TIE BARS SHOWN ABOVE WILL NOT BE PAID FOR SEPARATELY BUT SHALL BE CONSIDERED AS INCIDENTAL TO CLASS SI CONCRETE OUTLETS.
  4. WHEN SPECIAL INLET IS CONSTRUCTED ADJACENT TO FLEXIBLE PAVEMENT, THE TIE BARS SHALL BE OMITTED AND ALL CONSTRUCTION JOINTS SHALL BE PROVIDED WITH A DOWEL BAR CONFORMING TO ARTICLE 1006.11(b) [(706.11(b))].
  5. THIS WORK WILL BE PAID FOR AT THE CONTRACT UNIT PRICE PER m<sup>3</sup> (CU. YD.) FOR CLASS SI CONCRETE (OUTLETS) WHICH PRICE SHALL INCLUDE ALL LABOR AND MATERIAL AS SPECIFIED AND NO ADDITIONAL COMPENSATION WILL BE ALLOWED.
- All dimensions are in millimeters (inches) unless otherwise shown.

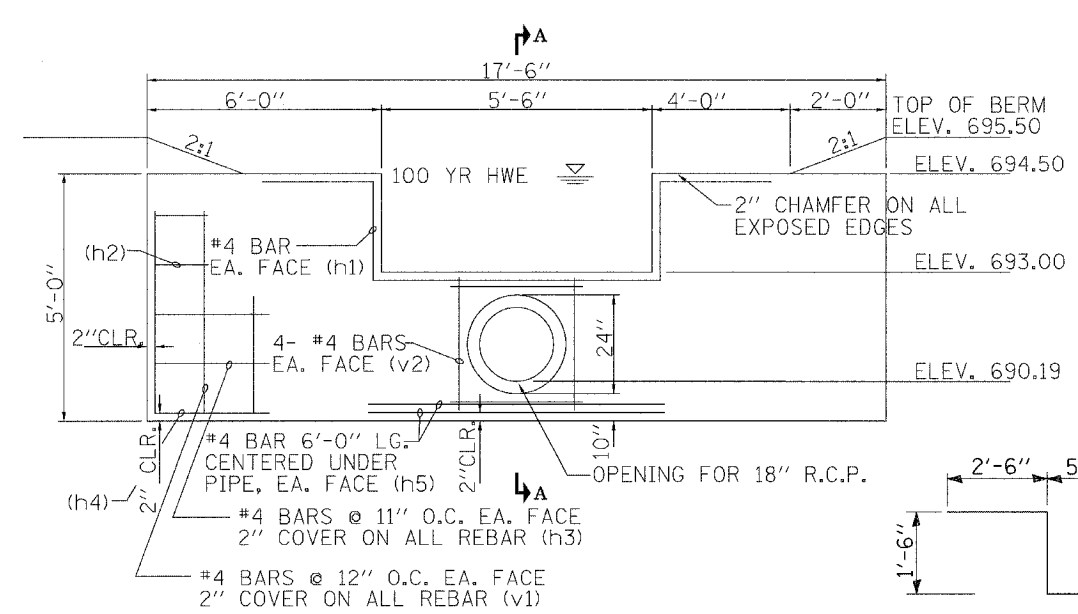
DESIGNED	NAME	DATE	REVISIONS	NAME	DATE
J.H.M.	J.H.M.	6/88			
P.E.K.	P.E.K.	6/88		G.A.M. (metric)	10/95
A-2.01	A-2.01			D.L.P.	10/96

STATION	DEPTH	POOL LENGTH	APRON LENGTH	WIDTH OF POOL AT OUTLET	THICKNESS AT APRON	THICKNESS AT REST OF BASIN
WATERWAY	0.25	11	5	10.0	2.00	1.50

NOTE: WARP BASIN TO CONFORM TO NATURAL STREAM CHANNEL. TOP OF RIPRAP IN FLOOR OF BASIN SHOULD BE AT THE SAME ELEVATION OR LOWER THAN NATURAL CHANNEL BOTTOM AT END OF APRON.

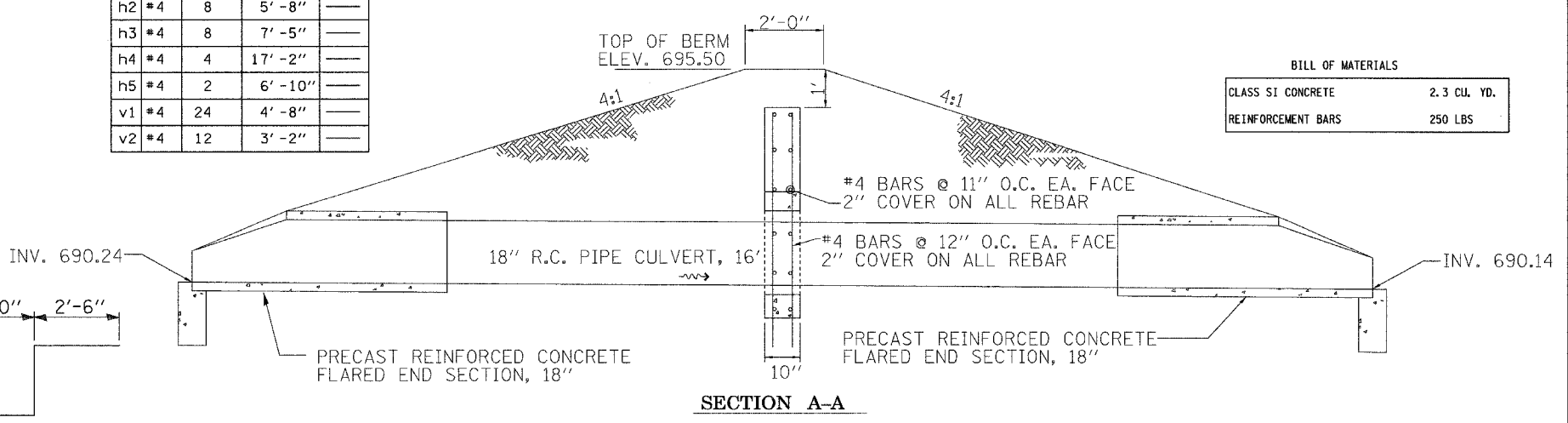


### RIPRAP STILLING BASIN DETAIL



BAR SIZE	NUMBER	LENGTH	SHAPE
h1 #4	2	13'-10"	┌
h2 #4	8	5'-8"	—
h3 #4	8	7'-5"	—
h4 #4	4	17'-2"	—
h5 #4	2	6'-10"	—
v1 #4	24	4'-8"	—
v2 #4	12	3'-2"	—

BAR h1



SECTION A-A

BILL OF MATERIALS	
CLASS SI CONCRETE	2.3 CU. YD.
REINFORCEMENT BARS	250 LBS

ELEVATION OF WEIR  
LOOKING SOUTH EAST

### DETENTION AREA OUTLET DETAIL US RTE 45, STA. 111+82 LT

REVISIONS	
NAME	DATE

ILLINOIS DEPARTMENT OF TRANSPORTATION  
**DETAILS**  
SCALE: VERT. \_\_\_\_\_  
HORIZ. \_\_\_\_\_  
DATE 04/04/2005  
DRAWN BY RLH  
CHECKED BY MED

TUG PROJ. #13197022-5  
SHEET DETAILS-W.dgn  
04/04/2005