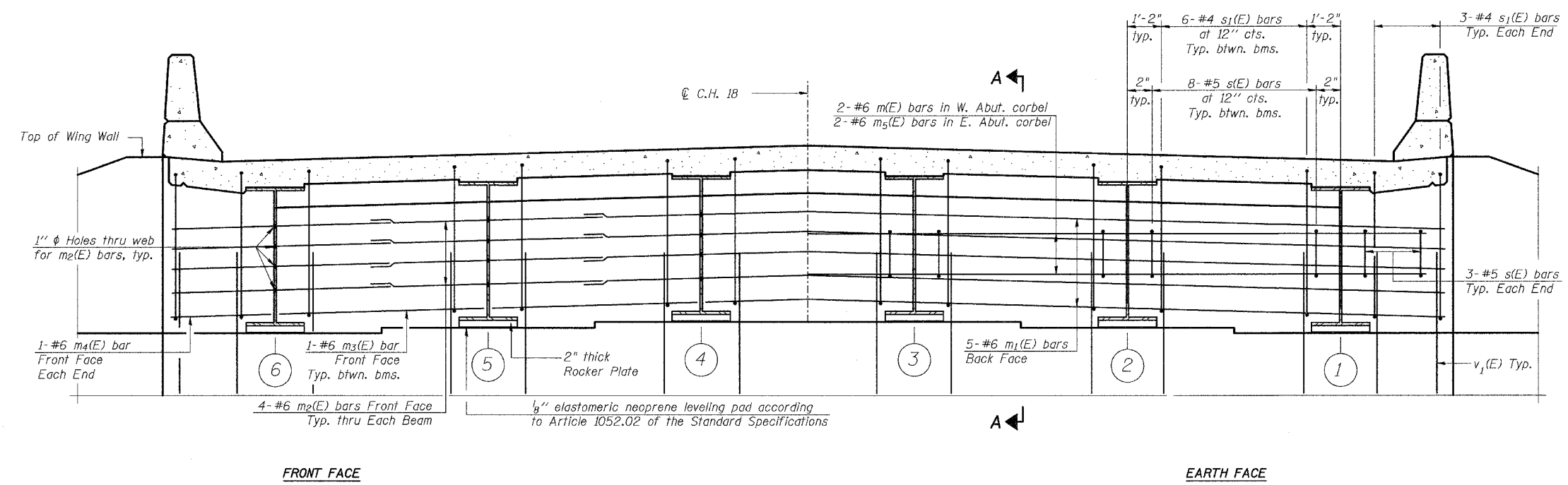
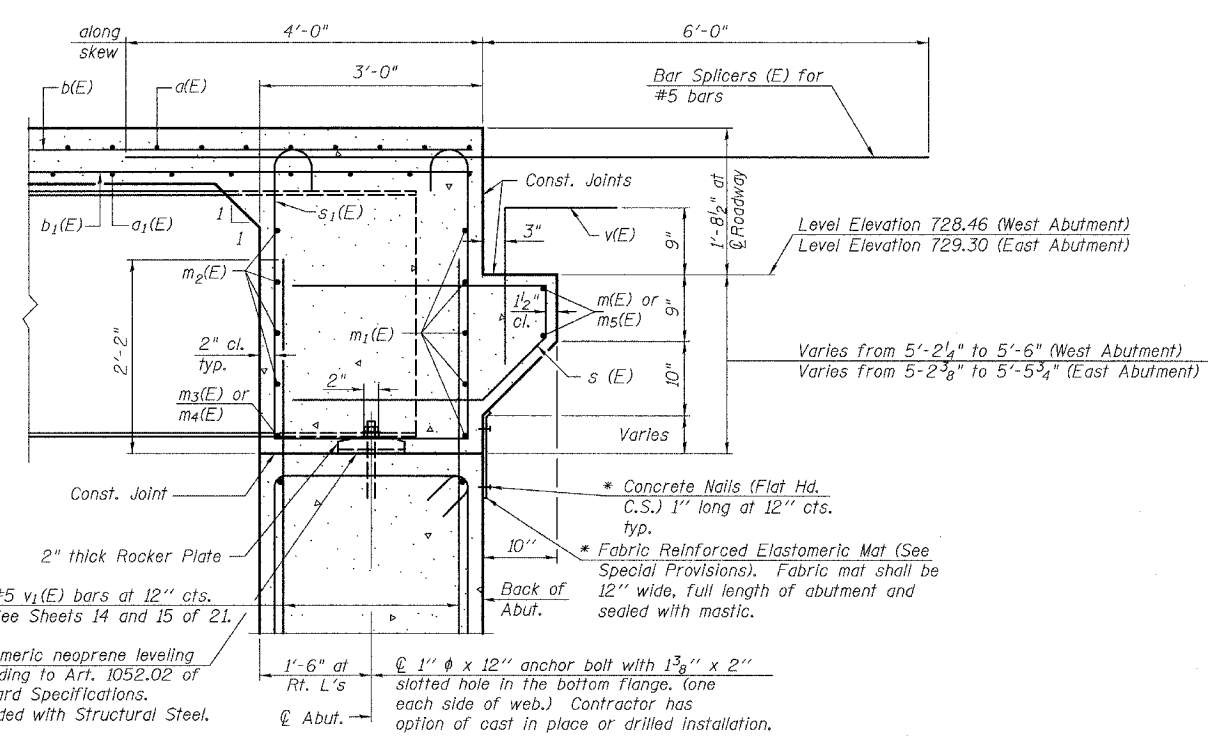


F.A.P. RTE.	SECTION	COUNTY	TOTAL SHEETS	SHEET NO.
642	99-00124-01-PV	COLES	157	91
STA.		TO STA.		
FED. ROAD DIST. NO.		ILLINOIS FED. AID PROJECT		



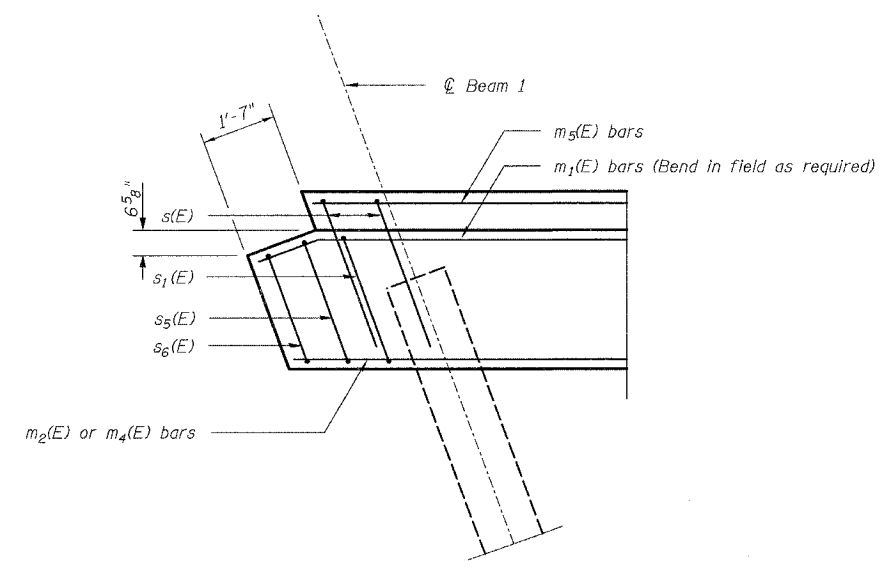
**END DIAPHRAGM AT WEST ABUTMENT**

(Looking West)  
 (East Abutment Similar)  
 (Dimensions are perpendicular to  $\text{C.R.}$  Roadway)



**SECTION A-A**

Dimensions at right angles to abutment, except as shown.  
 \* Cost Included with Concrete Structures.



**PLAN VIEW**

(North Corner of Diaphragm at East Abutment)

- Notes:
- Reinforcement bars designated (E) shall be epoxy coated.
  - Reinforcement bars in diaphragm are billed with superstructure on Sheet 9 of 21.
  - Concrete in diaphragm is included with Concrete Superstructure on Sheet 9 of 21.
  - For details of bars s(E), s1(E), s5(E) & s6(E), see Sheet 9 of 21.
  - The s(E) and s1(E) bars shall be placed parallel to the beams. Spacing for these bars shall be at right angles to the beams.
  - Work this sheet with Sheets 7 and 9 of 21.
  - Pour Abutment Diaphragm monolithically with Slab.
  - See Sheet 18 of 21 for Bar Splicer details.
  - See Sheet 17 of 21 for Anchor Bolt details.

**MIN. BAR LAP**  
 #6 bar = 2'-9"

REVISIONS	
NAME	DATE

ILLINOIS DEPARTMENT OF TRANSPORTATION  
**END DIAPHRAGM DETAILS**  
 CH 18 OVER US 45 AND CN/IC RR  
 FAS 642 SECTION 99-00124-01-PV  
 COLES COUNTY  
 STA. 121+87.25 STR. No. 015-3400  
 SCALE: DRAWN BY AGG  
 DATE: 1-21-2004 CHECKED BY MJS

**THE UPCHURCH GROUP**  
 HILLSIDE, IL. (708) 449-2321  
 MATTOON, IL. (217) 236-3177