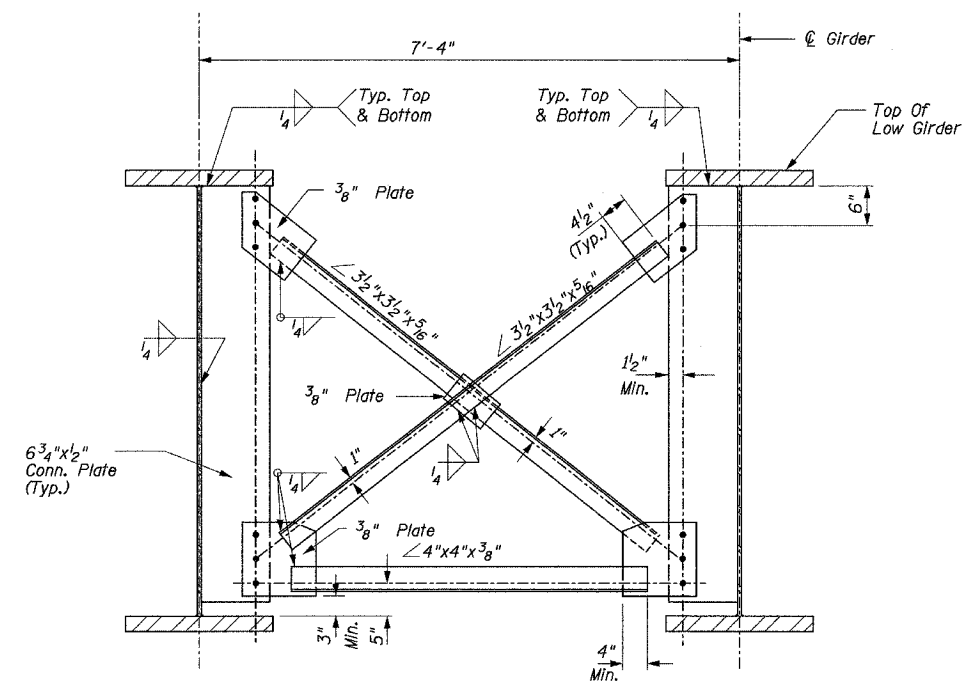
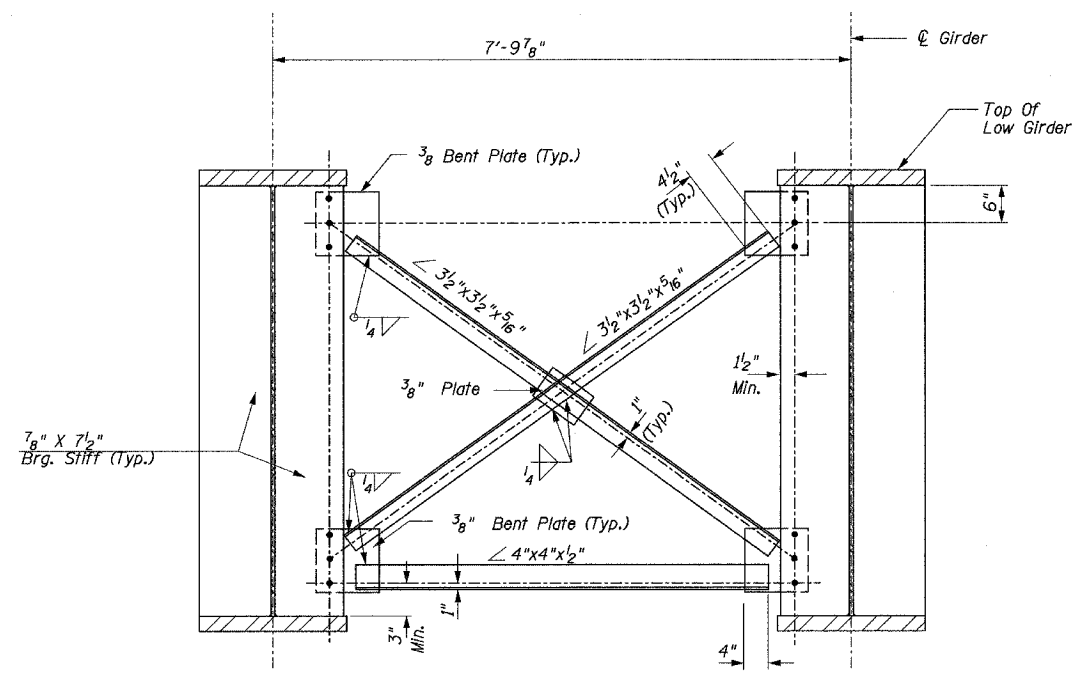


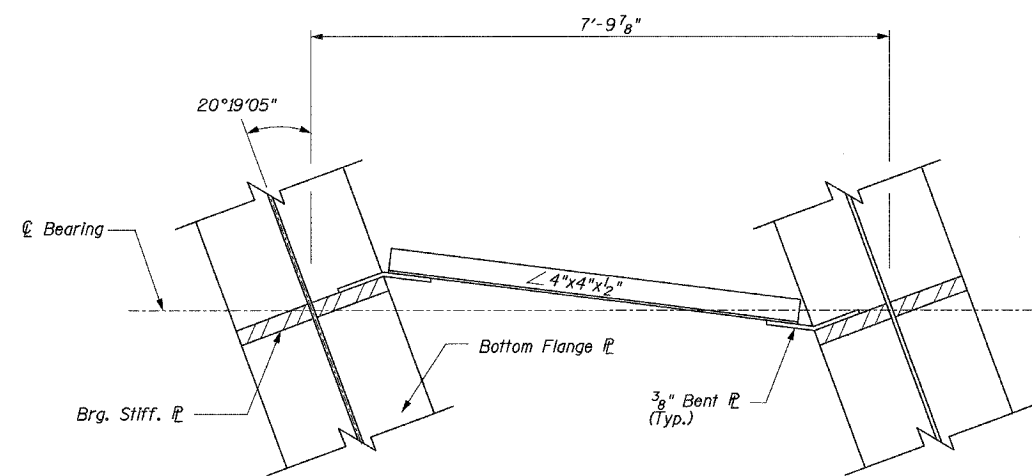
F.A.P. RTE.	SECTION	COUNTY	TOTAL SHEETS	SHEET NO.
642	99-00124-01-PV	COLES	157	95
STA.	TO STA.			
FED. ROAD DIST. NO.	ILLINOIS	FED. AID PROJECT		



CROSS FRAME C-1
(80 Required)



CROSS FRAME C-2
(5 Required)



PARTIAL PLAN
CROSS FRAME C-2

Notes:

1. Work this sheet with Sheets 10 and 11 of 21.
2. Provide 1/16" ϕ holes for all 7/8" ϕ H.S. bolts.
3. Two hardened washers shall be required over all oversized holes.

THE UPCHURCH GROUP

HILLSIDE, IL. (708) 449-2321
MATTOON, IL. (217) 235-3177

REVISIONS	
NAME	DATE

ILLINOIS DEPARTMENT OF TRANSPORTATION
CROSS FRAME DETAILS
CH 18 OVER US 45 AND CN/IC RR
FAS 642 SECTION 99-00124-01-PV
COLES COUNTY
STA. 121+87.25 STR. No. 015-3400

SCALE: DATE: 1-21-2004 DRAWN BY LMP CHECKED BY MJS