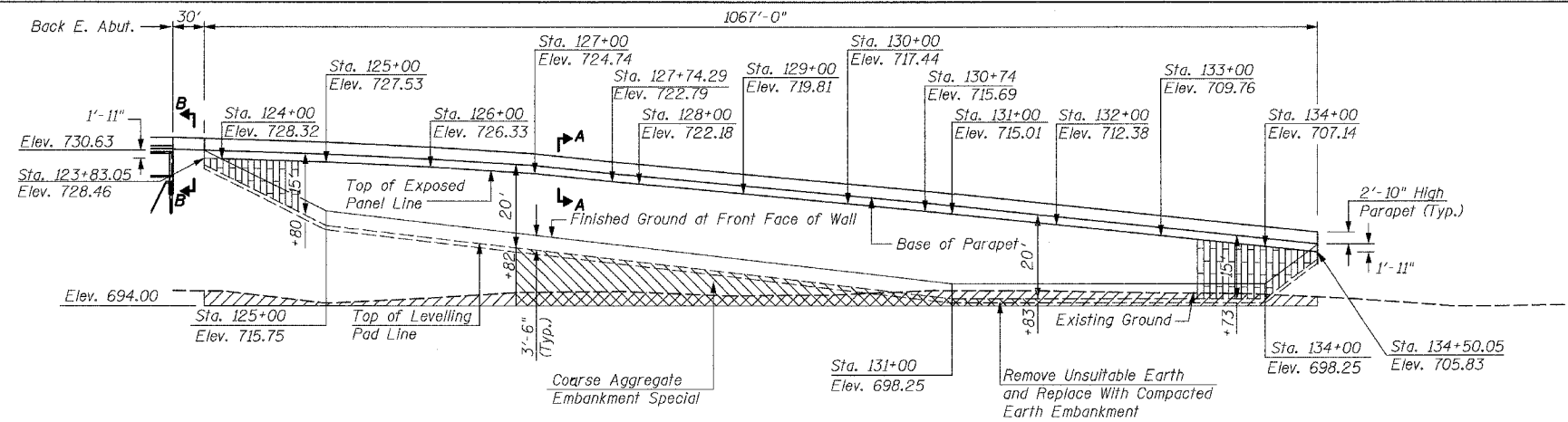


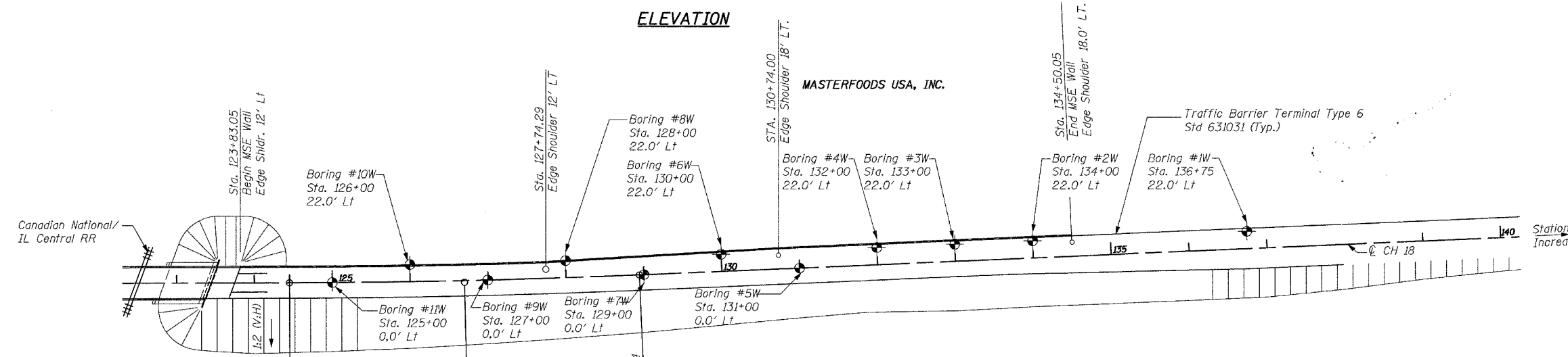
Benchwork: B.M. 600A Top Cap Bolt next to M in Mueller.
1st F.H. E of Inters. 620E/1000N,
S. Side of Rd. Elev. 699.58
Existing Structure: None

| F.A.P. RTE. | SECTION | COUNTY | TOTAL SHEETS | SHEET NO. |
|---------------------|----------------|----------|------------------|-----------|
| 642 | 99-00124-01-PV | COLES | 157 | 106 |
| STA. | | TO STA. | | |
| FED. ROAD DIST. NO. | | ILLINOIS | FED. AID PROJECT | |



MARTIN J. SILVESTER
STRUCTURAL ENGINEER
LICENSE EXP. DATE 11-30-06

ELEVATION

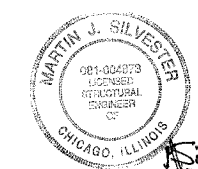


Prop. Curve 3
PI Sta. = 126+69.57
 $\Delta = 2^\circ 14' 17''$ (LT)
 $D = 0^\circ 29' 54''$
 $R = 11,500.00'$
 $T = 224.64'$
 $L = 449.21'$
 $E = 2.19'$
S.E. Run = None
P.C. Sta. = 124+44.93
P.T. Sta. = 128+94.14

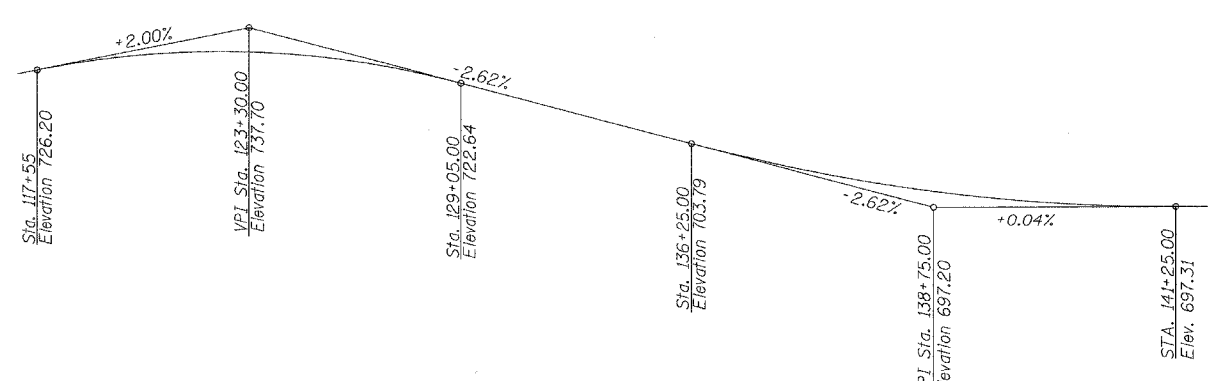
PLAN

BILL OF MATERIAL

| Item | Unit | Qty |
|--|------|-------|
| Mechanically Stabilized Earth Retaining Wall | S.F. | 17341 |



- The Contractor shall submit Shop Drawings and Calculations (Sealed by an Illinois Licensed Structural Engineer) of the Mechanically Stabilized Earth Retaining Wall in accordance with the Special Provision "Mechanically Stabilized Earth Retaining Walls".
- Work this Sheet with Sheets 2 and 3.
- See Sheet 3 for Section A-A.
- See "Bridge Approach Pavement Special" for Section B-B



PROFILE GRADE

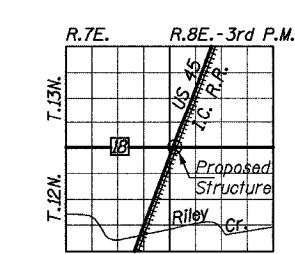
Along C.H. 18

DESIGN SPECIFICATIONS

2002 AASHTO

DESIGN STRESSES

$f'_c = 3,500$ psi (Concrete)
 $f'_c = 4,500$ psi (Panels)
 $f_y = 60,000$ psi (Reinf.)



LOCATION SKETCH

THE UPCHURCH GROUP
HILLSIDE, IL. (708) 449-2321
MATTOON, IL. (217) 235-3177

| REVISIONS | |
|-----------|------|
| NAME | DATE |
| | |
| | |
| | |
| | |
| | |

ILLINOIS DEPARTMENT OF TRANSPORTATION
GENERAL PLAN
RETAINING WALL ON CH 18
FAS 642 SECTION 99-00124-01-PV
COLES COUNTY STR. No. 015-3412
STA. 123+53.07 TO STA. 135+50.07
SCALE: N.T.S. DRAWN BY LMP
DATE: 1-21-2004 CHECKED BY