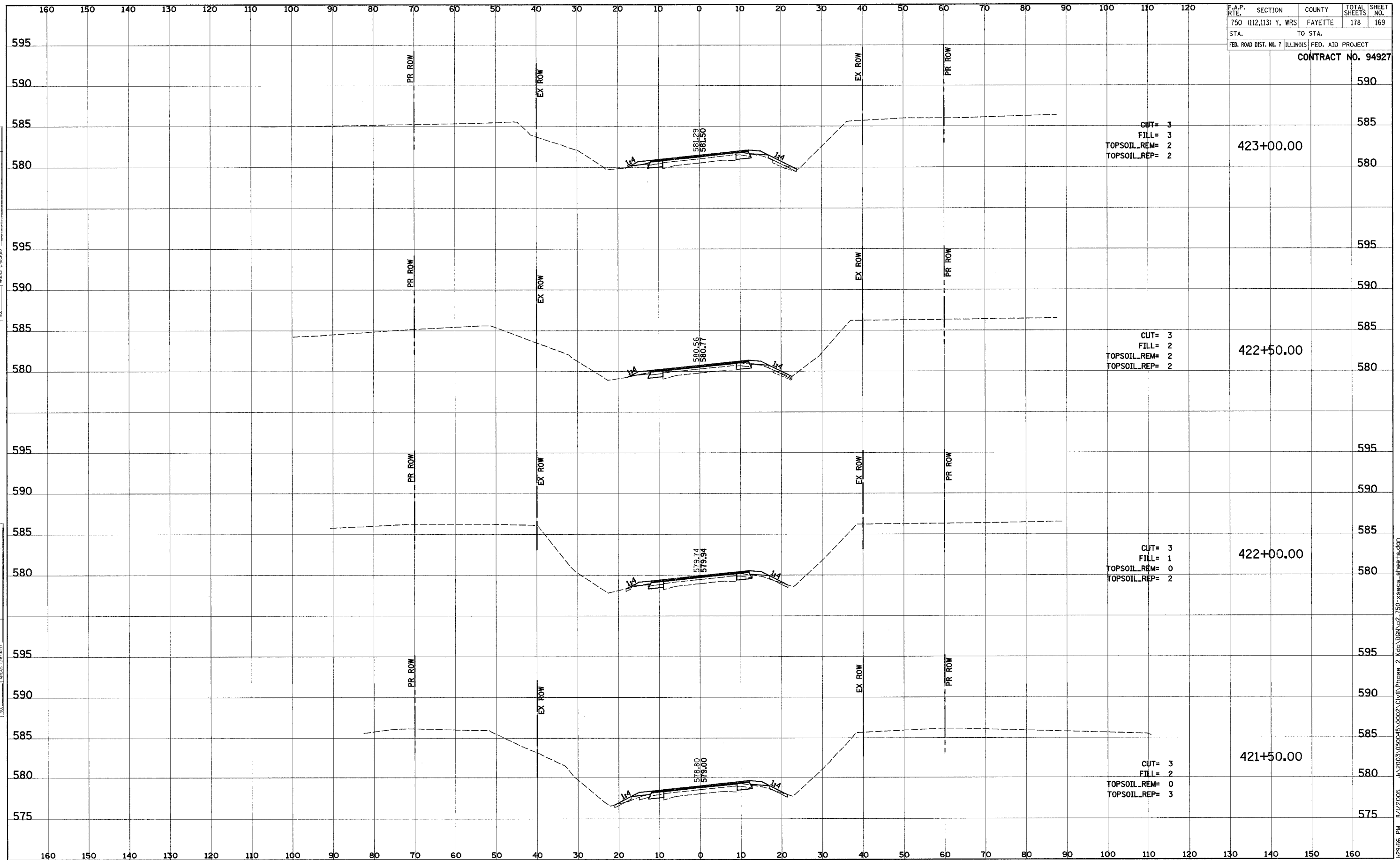


F.A.P. RTE.	SECTION	COUNTY	TOTAL SHEETS	SHEET NO.
750	(112,113) Y, WRS	FAYETTE	178	169
STA.		TO STA.		
FED. ROAD DIST. NO. 7		ILLINOIS	FED. AID PROJECT	
CONTRACT NO. 94927				

FINAL SURVEY	SUPERVED	DATE
NOTE BOOK	PLOTTED	
NO.	TEMPLATE	
	AREAS CHECKED	

ORIGINAL SURVEY	SUPERVED	DATE
NOTE BOOK	PLOTTED	
NO.	TEMPLATE	
	AREAS CHECKED	



8/1/2005 12:25:56 PM J:\2003\030045\0002\CIVIL\Phase 2 Kgd\DRN\p2_750-xsecs_sheets.dgn