

SECTION	COUNTY	TOTAL SHEETS	SHEET NO.
99-00007-00-HP	JERSEY	5	3

FEDERAL AID PROJECT  
CONTRACT NO. 97253

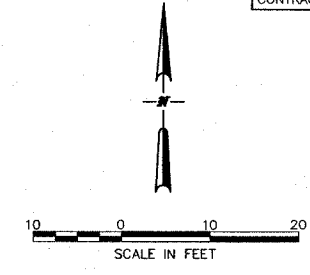
G.P. NORTH EAST

CONTROL POINT A (10)	10070.40	5086.39
CONTROL POINT B (20)	10094.93	5042.46
CONTROL POINT C (21)	10039.68	5131.74

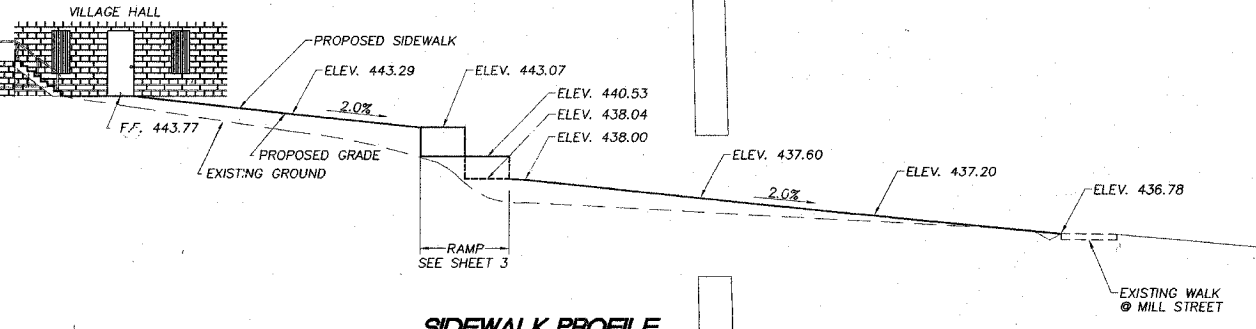
NOTE: CONTROL POINTS HAVE BEEN PLACED BY SMS SURVEYORS.

RADIUS POINTS NORTH EAST

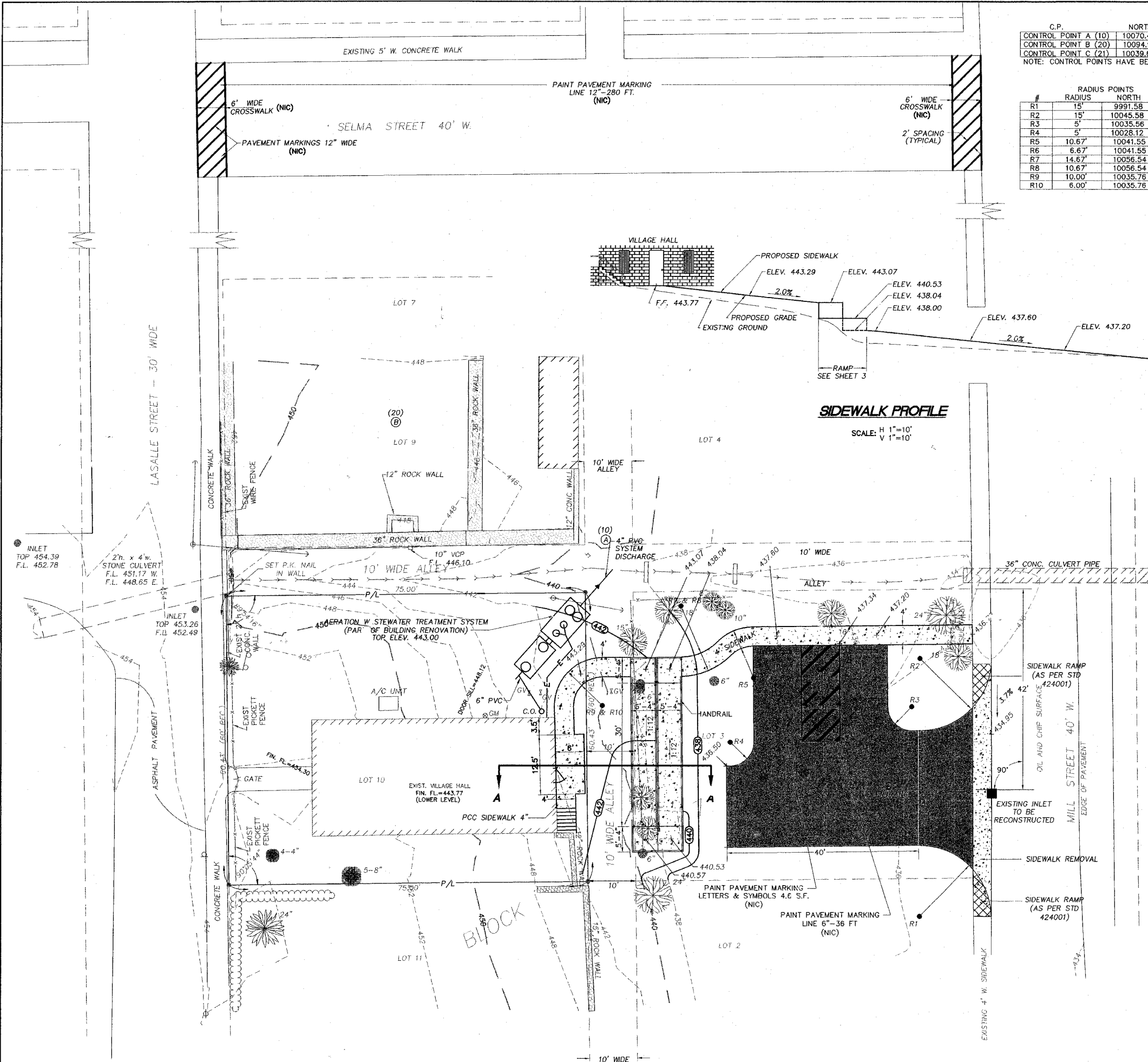
#	RADIUS	NORTH	EAST
R1	15'	9991.58	5152.03
R2	15'	10045.58	5152.05
R3	5'	10035.56	5150.35
R4	5'	10028.12	5112.44
R5	10.67'	10041.55	5117.3
R6	6.67'	10041.55	5117.3
R7	14.67'	10056.54	5102.11
R8	10.67'	10056.54	5102.11
R9	10.00'	10035.76	5085.71
R10	6.00'	10035.76	5085.71



**SIDEWALK PROFILE**  
SCALE: H 1"=10'  
V 1"=10'



**SITE PLAN**



REVISIONS

10/20/03	
5/28/04	
6/11/04	
8/09/04	
11/30/04	
5/15/05	
6/27/05	

**Sheppard Morgan & Schwaab, Inc.**  
CONSULTING ENGINEERS & LAND SURVEYORS  
215 Market Street  
Alton, Illinois 62002  
618/7482-9765  
10 Central Industrial Dr  
Northgate Center  
Greene City, IL 62040  
618/977-1900



**ELSAH VILLAGE HALL**  
ELSAH, JERSEY COUNTY, ILLINOIS  
**PUBLIC BATHROOM PROJECT**  
SITE PLAN

DWG. NO.	JC-717
PROJECT	ELSAH 10-20-03.DWG
REF. BK.	186 PG. 43
JOB NO.	424628
DSN. BY:	CAS
DWN. BY:	CAD
CHK. BY:	CAS
DATE:	JUNE, 2004
SCALE:	1" = 10'
SHEET	3 OF 5

S:\Land Projects\shah\dwg\elsh 10-20-03.dwg, 9/31/2006 2:24:01 PM, jman, 1:10