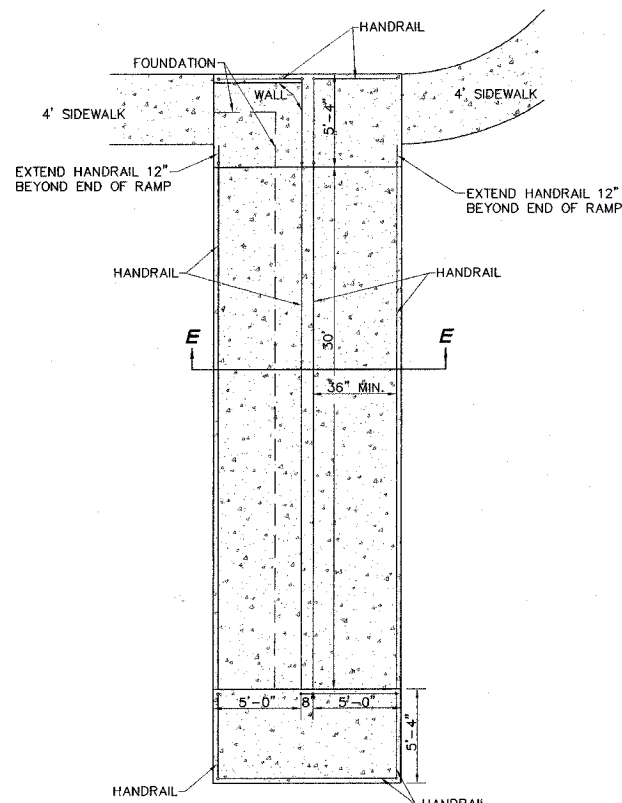
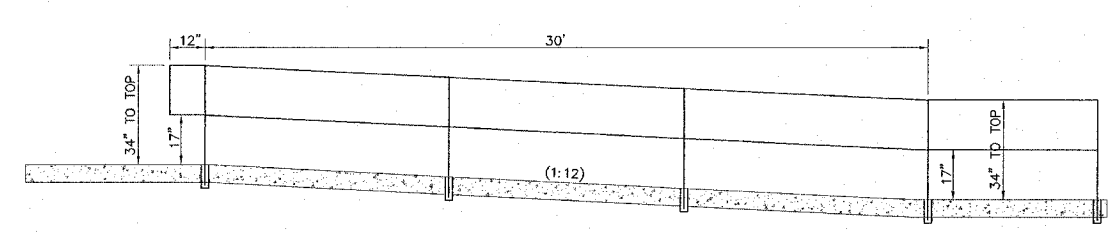


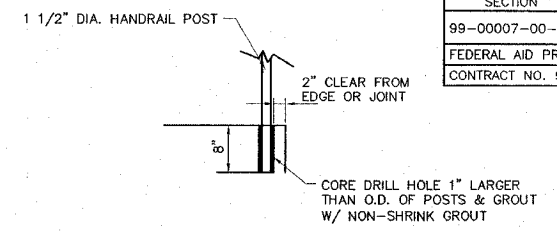
SECTION	COUNTY	TOTAL SHEETS	SHEET NO.
99-00007-00-HP	JERSEY	5	4
FEDERAL AID PROJECT			
CONTRACT NO. 97253			



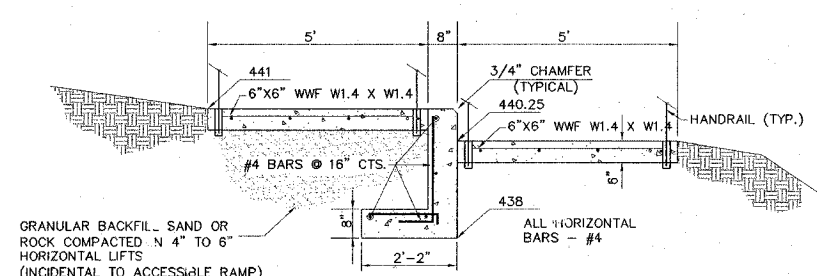
ACCESSIBLE RAMP DETAIL
SCALE: 1" = 5'



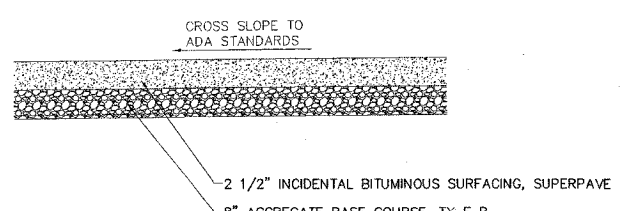
ACCESSIBLE HANDRAIL DETAIL
NOT TO SCALE



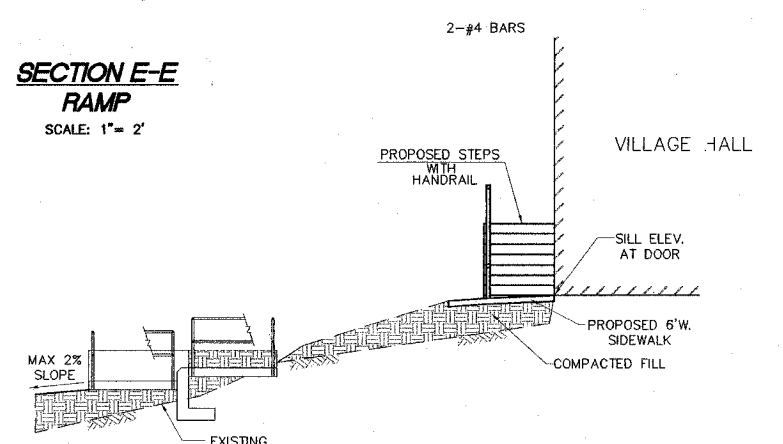
**TYPICAL DETAIL
HANDRAIL POST SET IN CONCRETE**
NOT TO SCALE



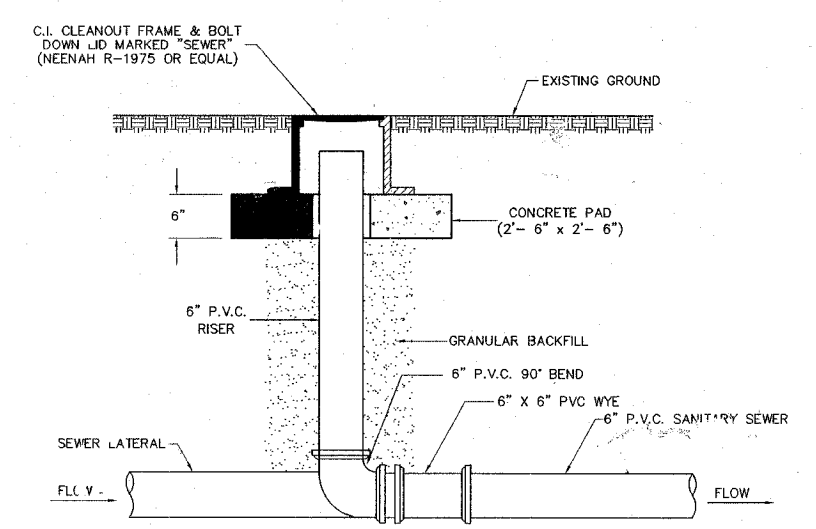
**SECTION E-E
RAMP**
SCALE: 1" = 2'



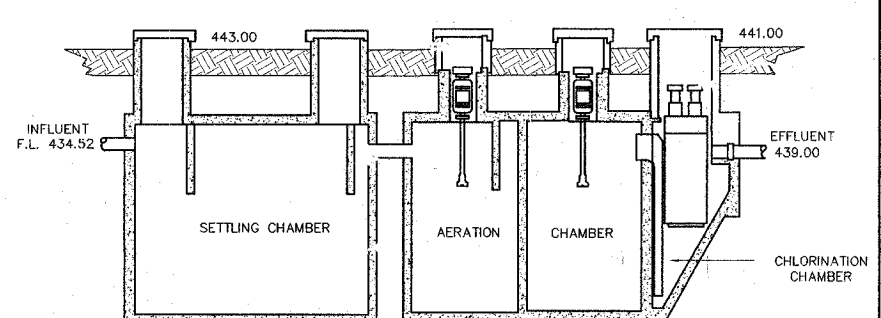
PARKING LOT SECTION
NOT TO SCALE



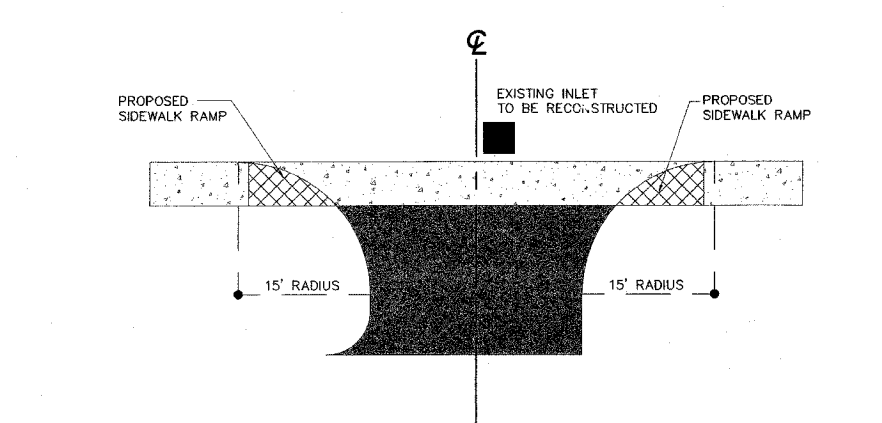
SECTION A-A
SCALE: 1" = 5'



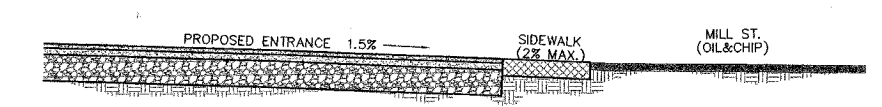
CLEANOUT
NOT TO SCALE



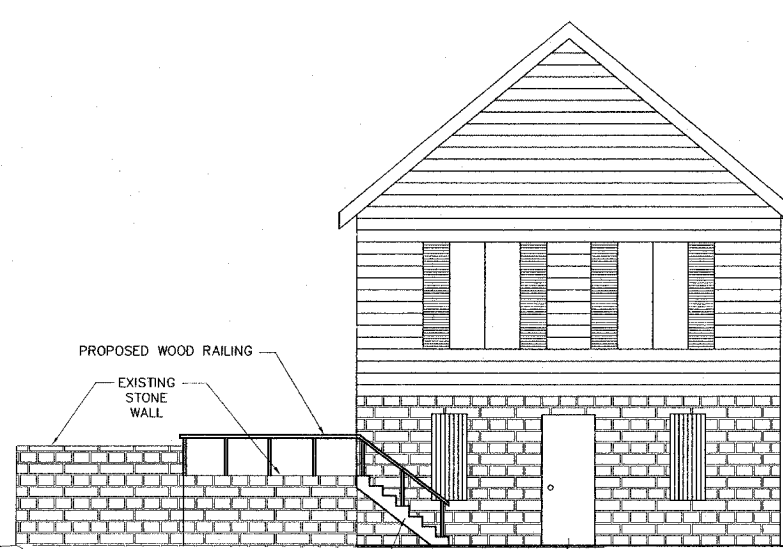
**AERATION WASTEWATER
TREATMENT SYSTEM**
NOT TO SCALE



ENTRANCE DETAIL
SCALE: 1" = 10'



ENTRANCE PROFILE AT C
NOT TO SCALE



EAST ELEVATION
SCALE: 1" = 5'

NOTE: PROPOSED WOOD STEPS AND RAILING SHALL BE INCIDENTAL TO BUILDING RENOVATIONS

REVISIONS	DATE	BY
10/20/03		
5/28/04		
6/11/04		
11/30/04		
3/15/05		
5/27/05		

Sheppard Morgan & Schwaab, Inc.
CONSULTING ENGINEERS & LAND SURVEYORS
10 Central Industrial Dr
Cortlandt Center, N.J. 08040
818/877-8700



ELSAH VILLAGE HALL
ELSAH, JERSEY COUNTY, ILLINOIS
PUBLIC BATHROOM PROJECT
DETAILS

DWG. NO.	DETAILS 10-20-03.DWG
PROJECT	ELSAH
REF. BK.	186 PG. 43
JOB NO.	424828
DSN. BY:	CAS
DWN. BY:	CAD
CHK. BY:	CAS
DATE:	OCTOBER, 2001
SCALE:	AS SHOWN
SHEET	4 OF 5