

STATE OF ILLINOIS
 DEPARTMENT OF TRANSPORTATION
 DIVISION OF HIGHWAYS

F.A.B. RTE.	SECTION	COUNTY	TOTAL SHEETS	SHEET NO.
840	143N	WILL	121*	1

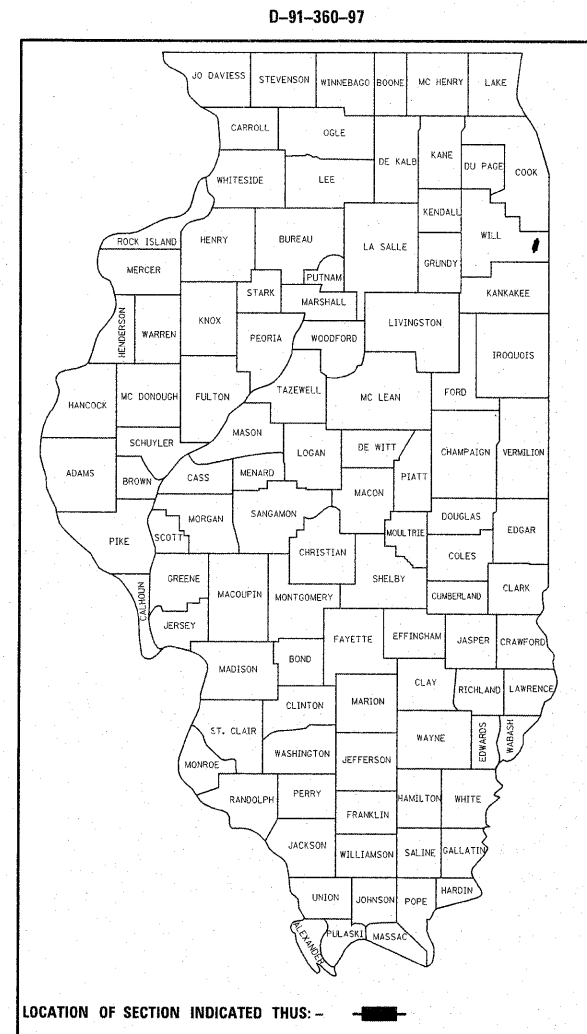
* 121-10+2=113
 CONTRACT NO. - 60445

FOR INDEX OF SHEETS, SEE SHEET NO. 2

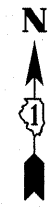
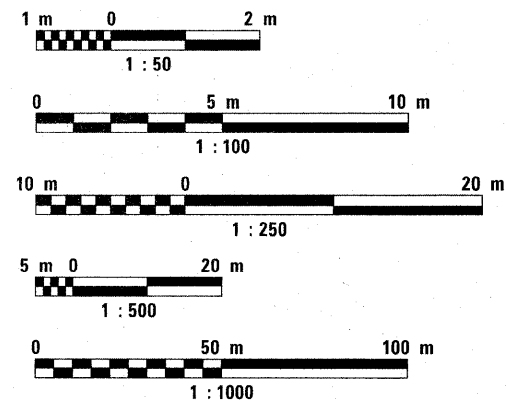
THE IMPROVEMENT IS LOCATED
 IN THE VILLAGE OF MONEE

AVERAGE DAILY TRAFFIC
 IL-50-2009 ADT=10,000
 DESIGN DESIGNATION:
 IL 50
 1360 (14) ARTERIAL 6.03 (PCC-20)
 SPEED LIMIT (POSTED):
 IL 50 = 60 KPH (35 MPH)
 COURT ST. = 50 KPH (30 MPH)

**PLANS FOR PROPOSED
 HIGHWAY**
 FAP 840 (IL-50 GOVERNORS HIGHWAY)
 AT COURT STREET
 SECTION: 143 N
 INTERSECTION RECONSTRUCTION,
 LIGHTING AND TRAFFIC SIGNAL MODERNIZATION.
 PROJECT: NHF-0840(064)
 WILL COUNTY
 C-91-360-97



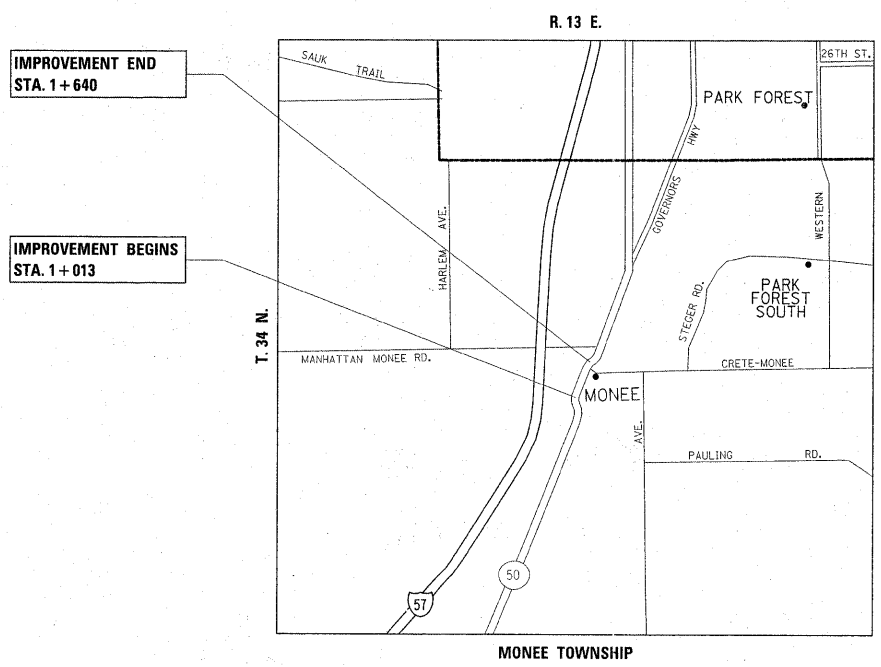
METRIC RATIOS



FULL SIZE PLANS HAVE BEEN PREPARED USING STANDARD
 ENGINEERING SCALES. REDUCED SIZED PLANS WILL NOT
 CONFORM TO STANDARD SCALES. IN MAKING MEASUREMENTS
 ON REDUCED PLANS, THE ABOVE SCALES MAY BE USED.

J.U.L.I.E.
 JOINT UTILITY LOCATION INFORMATION FOR EXCAVATION
 1-800-892-0123

PROJECT ENGINEER: JENPAI CHANG (847) 705-4432
 PROJECT MANAGER: KEN ENG
 CONTRACT NO. 60445



GROSS LENGTH OF PROJECT=627m (0.627km)
 NET LENGTH OF PROJECT=627m (0.627km)

STATE OF ILLINOIS
 DEPARTMENT OF TRANSPORTATION
 DIVISION OF HIGHWAYS

SUBMITTED 5/4/11 20 11
 Diana M. O'Keefe
 DEPUTY DIRECTOR OF HIGHWAYS, REGION ENGINEER

July 1 20 11
 Scott E. Stitt, P.E.
 ENGINEER OF DESIGN AND ENVIRONMENT

July 1 20 11
 Christine M. Reed
 DIRECTOR OF HIGHWAYS, CHIEF ENGINEER

PRINTED BY THE AUTHORITY
 OF THE STATE OF ILLINOIS