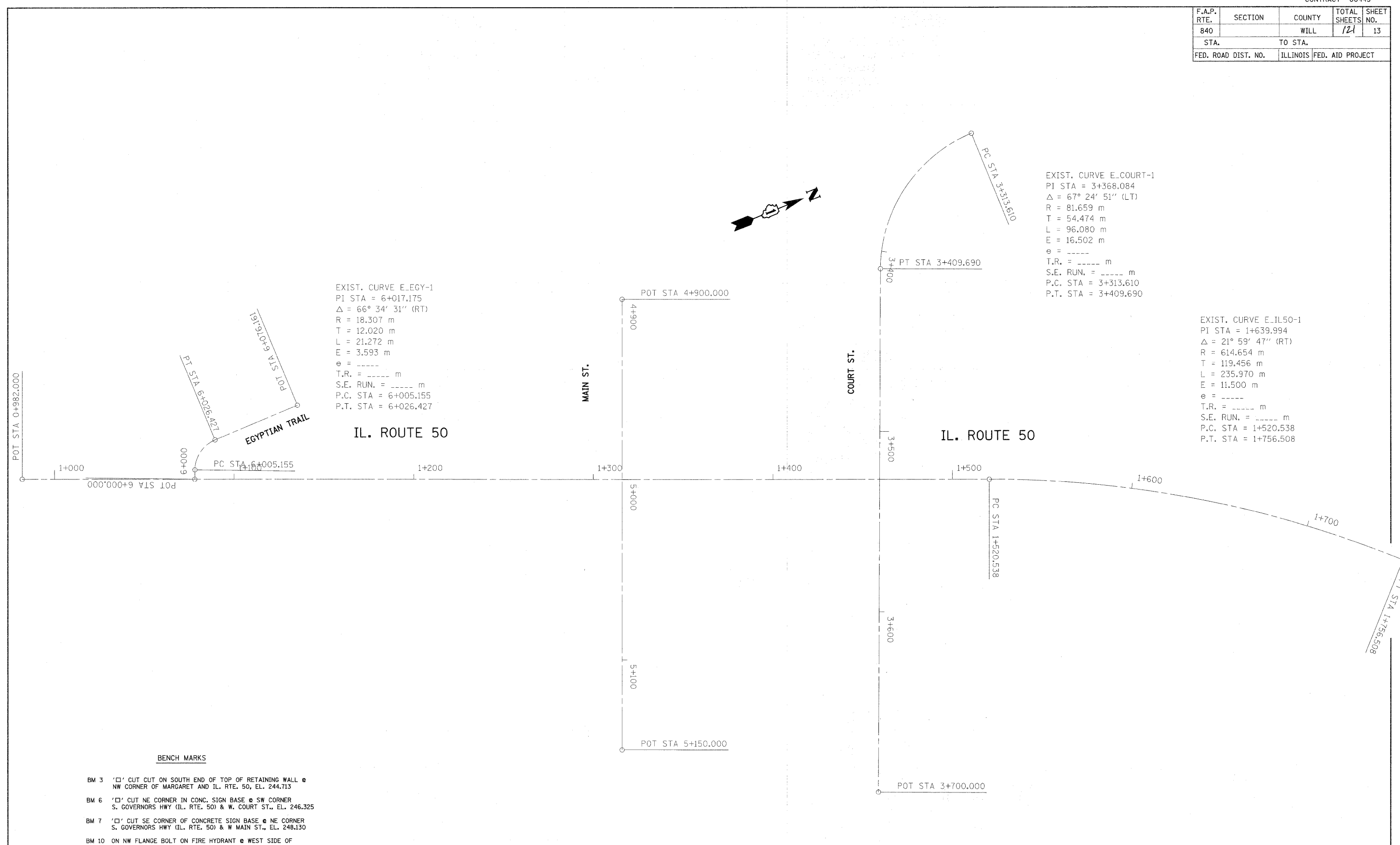


F.A.P. RTE.	SECTION	COUNTY	TOTAL SHEETS	SHEET NO.
840		WILL	121	13
STA.		TO STA.		
FED. ROAD DIST. NO.		ILLINOIS FED. AID PROJECT		



EXIST. CURVE E_GY-1
 PI STA = 6+017.175
 $\Delta = 66^\circ 34' 31''$ (RT)
 R = 18.307 m
 T = 12.020 m
 L = 21.272 m
 E = 3.593 m
 $e =$ -----
 T.R. = ----- m
 S.E. RUN. = ----- m
 P.C. STA = 6+005.155
 P.T. STA = 6+026.427

EXIST. CURVE E_COURT-1
 PI STA = 3+368.084
 $\Delta = 67^\circ 24' 51''$ (LT)
 R = 81.659 m
 T = 54.474 m
 L = 96.080 m
 E = 16.502 m
 $e =$ -----
 T.R. = ----- m
 S.E. RUN. = ----- m
 P.C. STA = 3+313.610
 P.T. STA = 3+409.690

EXIST. CURVE E_IL50-1
 PI STA = 1+639.994
 $\Delta = 21^\circ 59' 47''$ (RT)
 R = 614.654 m
 T = 119.456 m
 L = 235.970 m
 E = 11.500 m
 $e =$ -----
 T.R. = ----- m
 S.E. RUN. = ----- m
 P.C. STA = 1+520.538
 P.T. STA = 1+756.508

BENCH MARKS

- BM 3 '□' CUT CUT ON SOUTH END OF TOP OF RETAINING WALL @ NW CORNER OF MARGARET AND IL. RTE. 50, EL. 244.713
- BM 6 '□' CUT NE CORNER IN CONC. SIGN BASE @ SW CORNER S. GOVERNORS HWY (IL. RTE. 50) & W. COURT ST., EL. 246.325
- BM 7 '□' CUT SE CORNER OF CONCRETE SIGN BASE @ NE CORNER S. GOVERNORS HWY (IL. RTE. 50) & W MAIN ST., EL. 248.130
- BM 10 ON NW FLANGE BOLT ON FIRE HYDRANT @ WEST SIDE OF EGYPTIAN TRAIL AND IL. RTE. 50 BUSINESS 25964, EL. 242.802
- BM 11 ON NW FLANGE BOLT ON FIRE HYDRANT @ NORTH SIDE OF COURT ST. AT BRIAR, EL. 246.020
- BM 13 ON NE FLANGE BOLT ON FIRE HYDRANT @ NE CORNER OF COURT ST. AND CHESTNUT, EL. 246.547
- BM 14 ON NW FLANGE BOLT ON FIRE HYDRANT @ NW CORNER OF MAIN ST. AND CHESTNUT, EL. 245.879

REVISIONS		ILLINOIS DEPARTMENT OF TRANSPORTATION
NAME	DATE	
		IL. RTE. 50 AT MAIN ST. & COURT ST. ALIGNMENT & TIES PLAN
SCALE 1:1000		DRAWN BY
DATE 5/11/2011		CHECKED BY