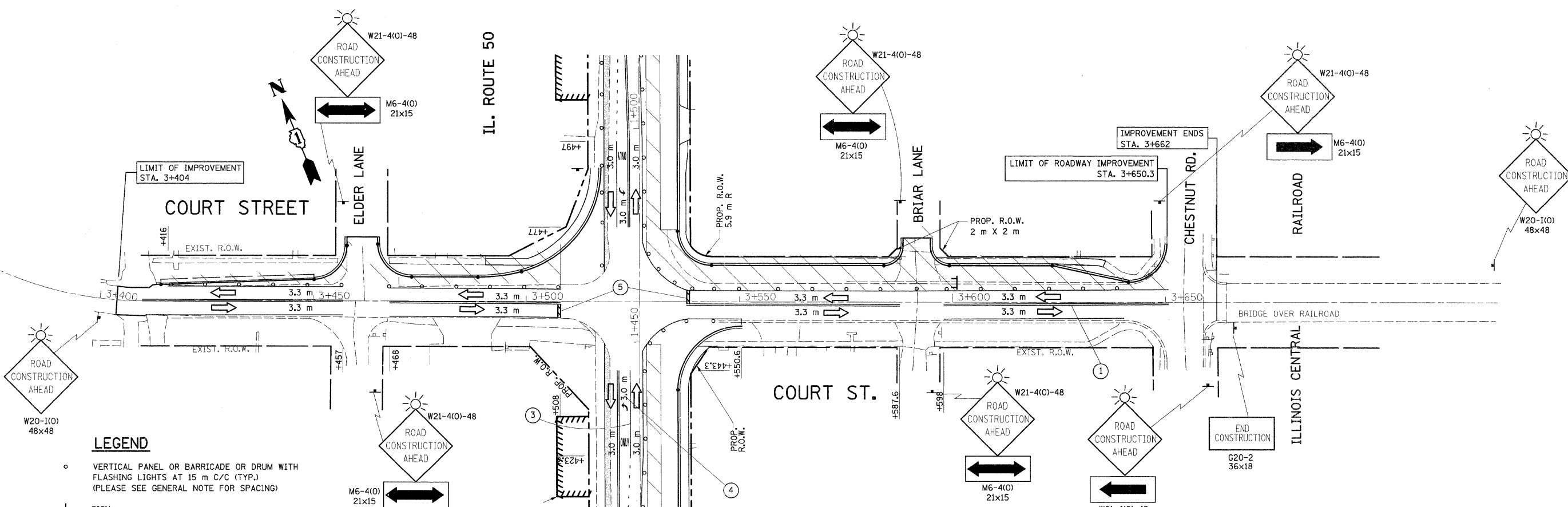
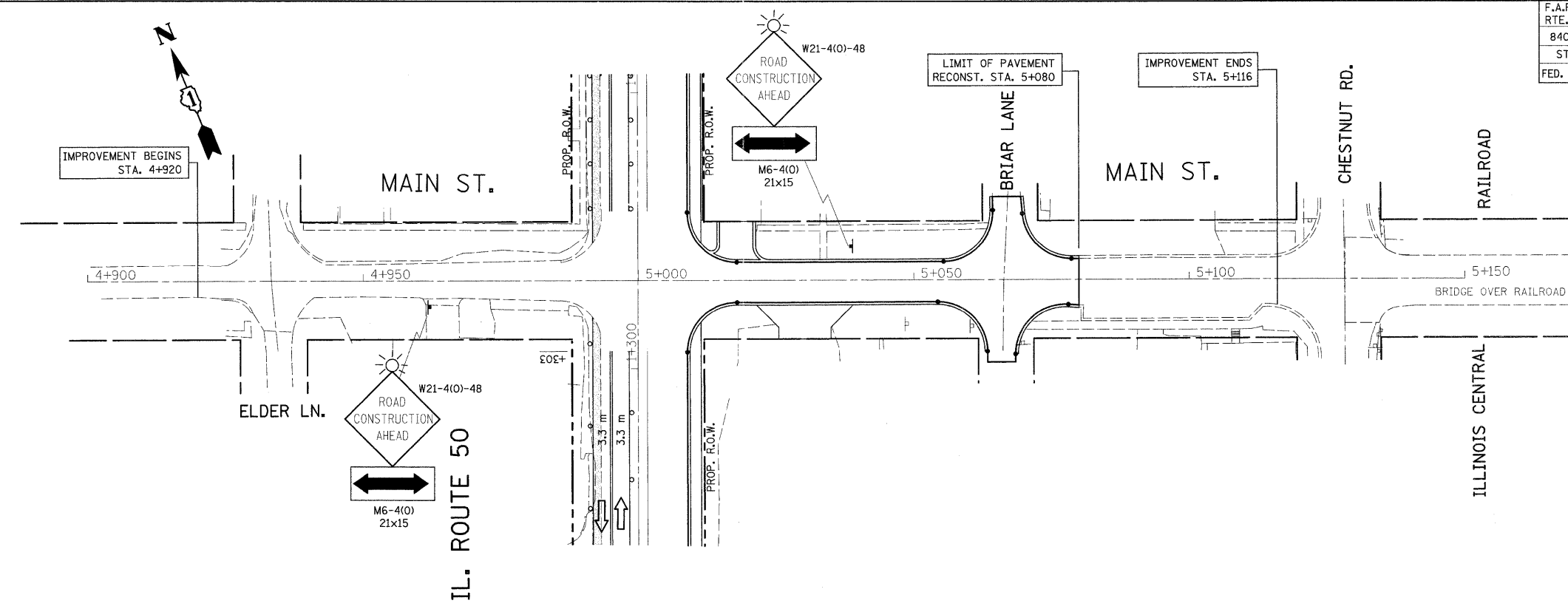


F.A.P. RTE.	SECTION	COUNTY	TOTAL SHEETS	SHEET NO.
840	143N	WILL	121	24
STA.		TO STA.		
FED. ROAD DIST. NO.		ILLINOIS	FED. AID PROJECT	
CONTRACT #60445				



- LEGEND**
- VERTICAL PANEL OR BARRICADE OR DRUM WITH FLASHING LIGHTS AT 15 m C/C (TYP.) (PLEASE SEE GENERAL NOTE FOR SPACING)
  - ⊥ SIGN
  - ⊥ BARRICADE TYPE III
  - ➡ DIRECTION OF TRAFFIC
  - ➡ ARROW BOARD
  - ▨ WORK AREA

- PAVEMENT MARKINGS**
- ① TEMPORARY PAVEMENT MARKINGS, YELLOW DOUBLE LINE (100 mm) CENTERLINE WITH TEMP. YELLOW RAISED REFLECTIVE PAVEMENT MARKERS
  - ② TEMPORARY PAVEMENT MARKINGS, WHITE SKIP DASH (100 mm) LANE LINE
  - ③ TEMPORARY PAVEMENT MARKINGS, SOLID WHITE LINE (150 mm) LANE LINE
  - ④ TEMPORARY PAVEMENT MARKINGS, LETTERS AND SYMBOLS
  - ⑤ TEMPORARY PAVEMENT MARKINGS, SOLID WHITE LINE (600 mm) STOP BAR

NOTE:  
FOR TRAFFIC CONTROL & PROTECTION USE STATE STD. #701301, 701606, 701701 AND DIST. DETAILS FOR SIDE ROAD, INTERSECTION AND DRIVEWAYS.

REVISIONS	
NAME	DATE

ILLINOIS DEPARTMENT OF TRANSPORTATION  
**SUGGESTED STAGES OF CONSTRUCTION AND TRAFFIC CONTROL**  
**STAGE IA**  
**MAIN ST. AND COURT ST.**

SCALE 1:500  
DATE 10/17/2011

DRAWN BY  
CHECKED BY