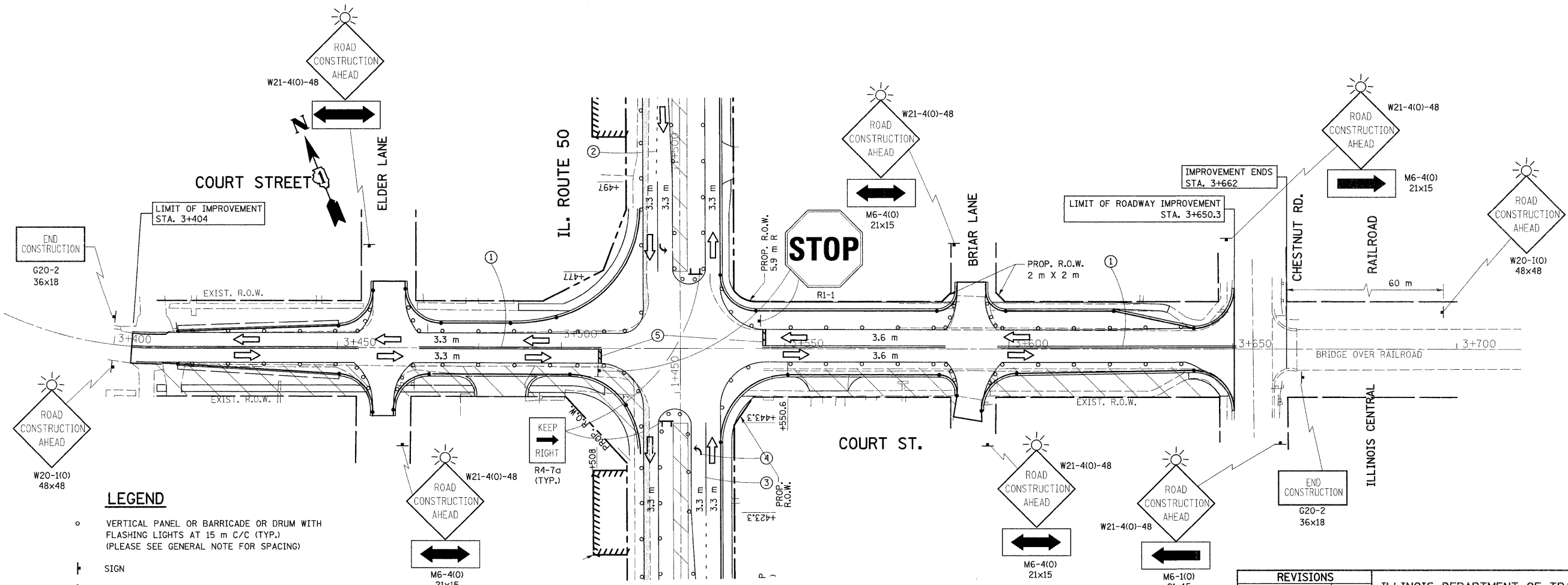
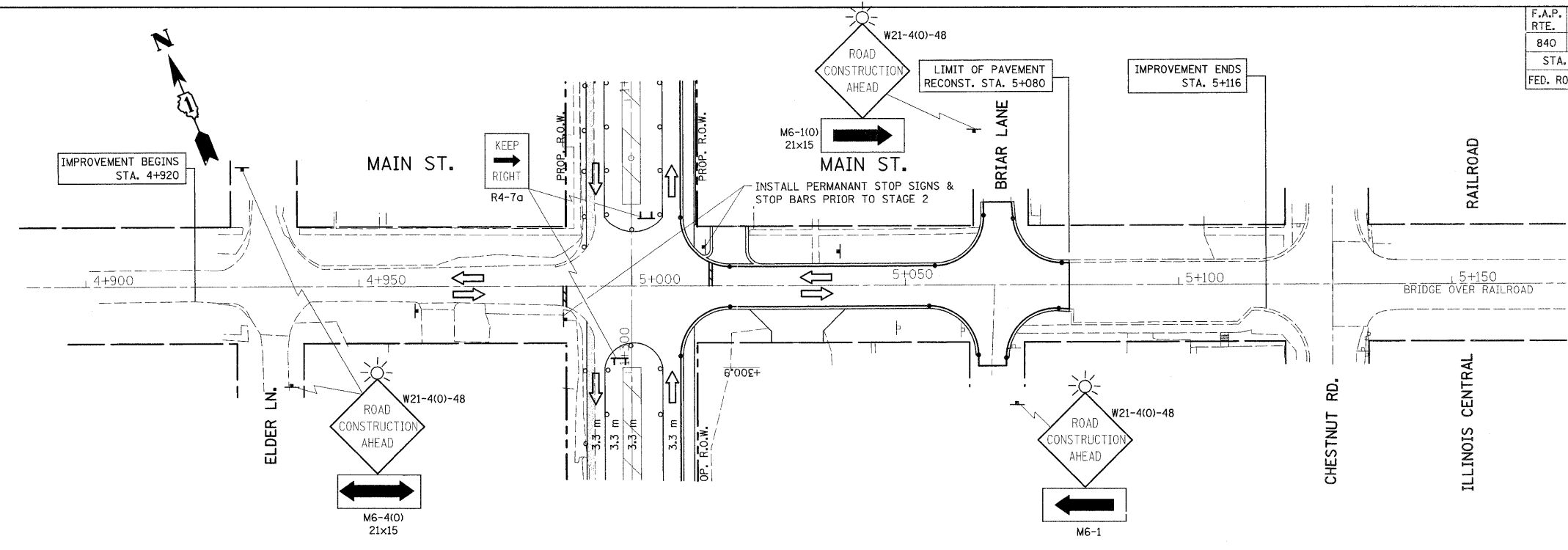


F.A.P. RTE.	SECTION	COUNTY	TOTAL SHEETS	SHEET NO.
840	143N	WILL	121	26
STA.		TO STA.		
FED. ROAD DIST. NO.		ILLINOIS FED. AID PROJECT		
CONTRACT #60445				



**LEGEND**

- VERTICAL PANEL OR BARRICADE OR DRUM WITH FLASHING LIGHTS AT 15 m C/C (TYP.) (PLEASE SEE GENERAL NOTE FOR SPACING)
- ⊥ SIGN
- ⊥ BARRICADE TYPE III
- ➡ DIRECTION OF TRAFFIC
- ➡ ARROW BOARD
- ▨ WORK AREA

**PAVEMENT MARKINGS**

- ① TEMPORARY PAVEMENT MARKINGS, YELLOW DOUBLE LINE (100 mm) CENTERLINE WITH TEMP. YELLOW RAISED REFLECTIVE PAVEMENT MARKERS
- ② TEMPORARY PAVEMENT MARKINGS, WHITE SKIP DASH (100 mm) LANE LINE
- ③ TEMPORARY PAVEMENT MARKINGS, SOLID WHITE LINE (150 mm) LANE LINE
- ④ TEMPORARY PAVEMENT MARKINGS, LETTERS AND SYMBOLS
- ⑤ TEMPORARY PAVEMENT MARKINGS, SOLID WHITE LINE (600 mm) STOP BAR

NOTE:  
FOR TRAFFIC CONTROL & PROTECTION USE STATE STD. #701301, 701606, 701701 AND DIST. DETAILS FOR SIDE ROAD, INTERSECTION AND DRIVEWAYS.

REVISIONS	
NAME	DATE

ILLINOIS DEPARTMENT OF TRANSPORTATION  
SUGGESTED STAGES OF CONSTRUCTION  
AND TRAFFIC CONTROL  
STAGE II  
MAIN ST. AND COURT ST.  
SCALE 1:500  
DATE 10/17/2011  
DRAWN BY  
CHECKED BY