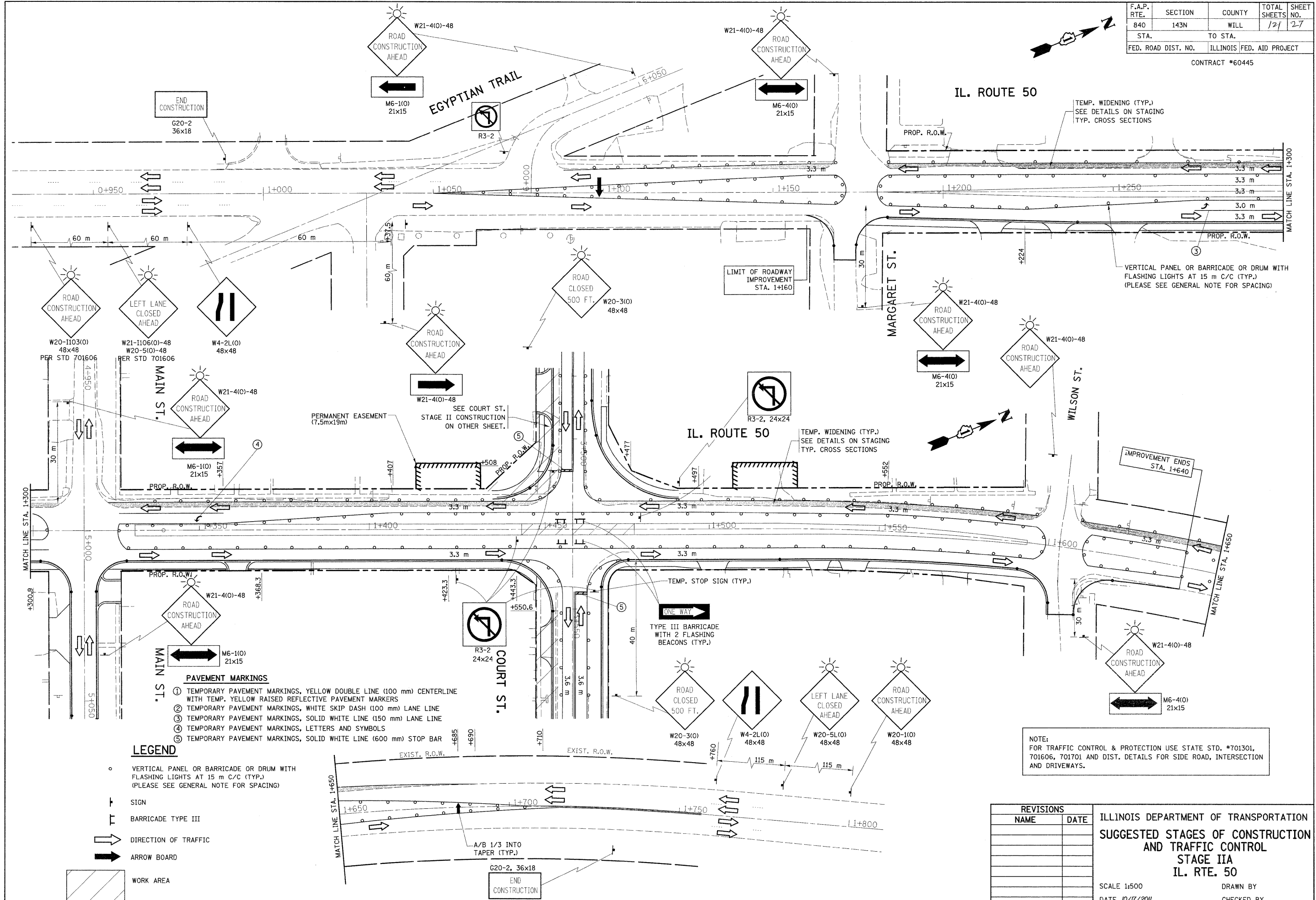


F.A.P. RTE.	SECTION	COUNTY	TOTAL SHEETS	SHEET NO.
840	143N	WILL	121	27
STA.		TO STA.		
FED. ROAD DIST. NO.		ILLINOIS FED. AID PROJECT		

CONTRACT #60445



- PAVEMENT MARKINGS**
- TEMPORARY PAVEMENT MARKINGS, YELLOW DOUBLE LINE (100 mm) CENTERLINE WITH TEMP. YELLOW RAISED REFLECTIVE PAVEMENT MARKERS
 - TEMPORARY PAVEMENT MARKINGS, WHITE SKIP DASH (100 mm) LANE LINE
 - TEMPORARY PAVEMENT MARKINGS, SOLID WHITE LINE (150 mm) LANE LINE
 - TEMPORARY PAVEMENT MARKINGS, LETTERS AND SYMBOLS
 - TEMPORARY PAVEMENT MARKINGS, SOLID WHITE LINE (600 mm) STOP BAR

- LEGEND**
- VERTICAL PANEL OR BARRICADE OR DRUM WITH FLASHING LIGHTS AT 15 m C/C (TYP.) (PLEASE SEE GENERAL NOTE FOR SPACING)
 - ⊥ SIGN
 - ⊥ BARRICADE TYPE III
 - DIRECTION OF TRAFFIC
 - ARROW BOARD
 - ▨ WORK AREA

NOTE:
 FOR TRAFFIC CONTROL & PROTECTION USE STATE STD. #701301, 701606, 701701 AND DIST. DETAILS FOR SIDE ROAD, INTERSECTION AND DRIVEWAYS.

REVISIONS	
NAME	DATE

ILLINOIS DEPARTMENT OF TRANSPORTATION
 SUGGESTED STAGES OF CONSTRUCTION
 AND TRAFFIC CONTROL
 STAGE IIA
 IL. RTE. 50

SCALE 1:500
 DATE 10/17/2011
 DRAWN BY
 CHECKED BY