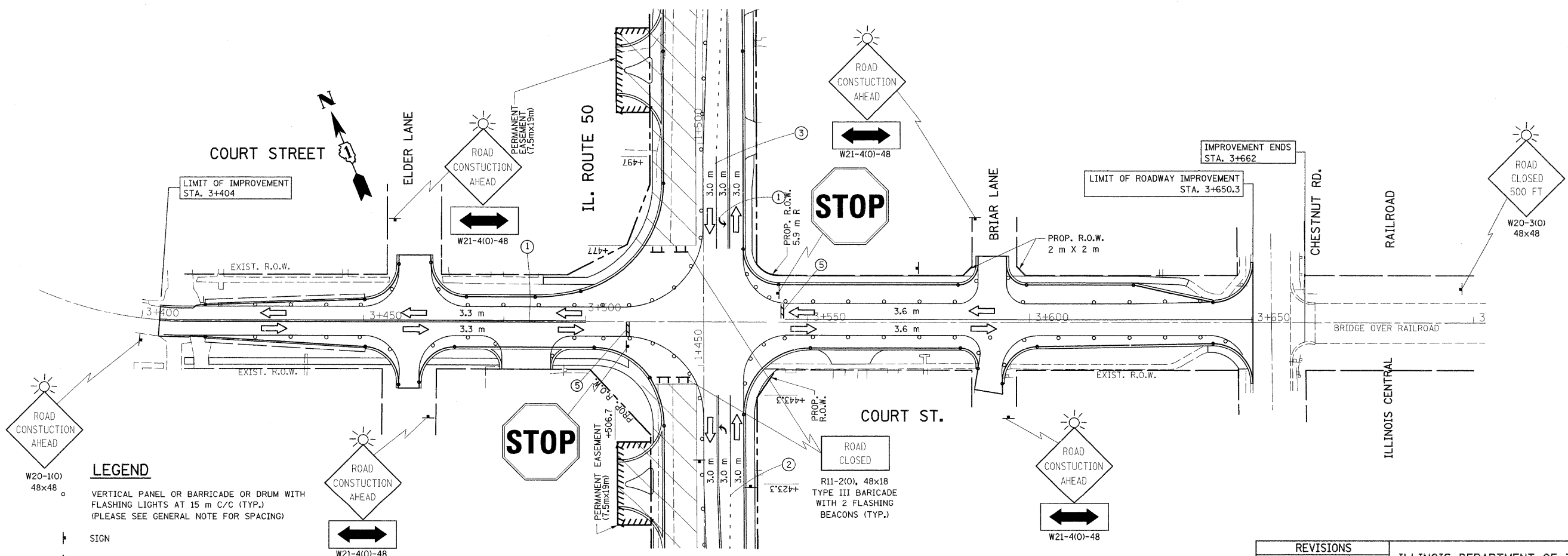
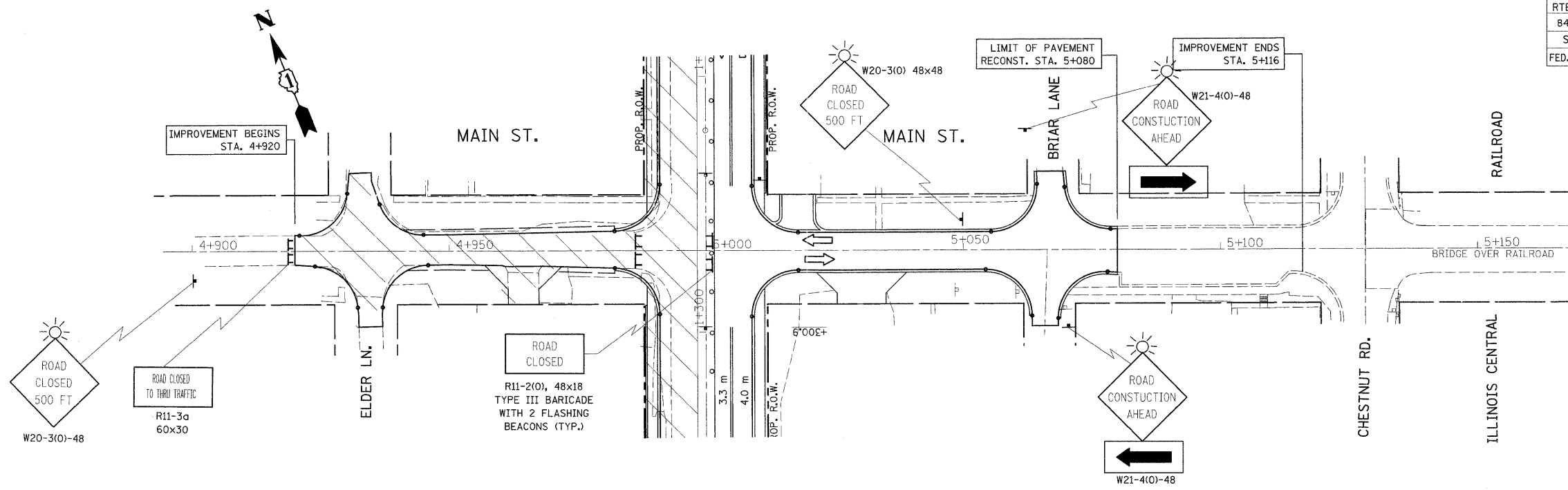


F.A.P. RTE.	SECTION	COUNTY	TOTAL SHEETS	SHEET NO.
840	143N	WILL	121	29
STA.		TO STA.		
FED. ROAD DIST. NO.		ILLINOIS FED. AID PROJECT		
CONTRACT NO. - 60445				



LEGEND

- W20-1(0) 48x48: VERTICAL PANEL OR BARRICADE OR DRUM WITH FLASHING LIGHTS AT 15 m C/C (TYP.) (PLEASE SEE GENERAL NOTE FOR SPACING)
- Sign symbol: SIGN
- BARRICADE TYPE III symbol: BARRICADE TYPE III
- Arrow symbol: DIRECTION OF TRAFFIC
- Arrow board symbol: ARROW BOARD
- Diagonal hatched area symbol: WORK AREA

- PAVEMENT MARKINGS**
- ① TEMPORARY PAVEMENT MARKINGS, YELLOW DOUBLE LINE (100 mm) CENTERLINE W/TEMP. YELLOW RAISED REFLECTIVE PAVEMENT MARKERS
 - ② TEMPORARY PAVEMENT MARKINGS, WHITE SKIP DASH (100 mm) LANE LINE
 - ③ TEMPORARY PAVEMENT MARKINGS, SOLID WHITE LINE (150 mm) LANE LINE
 - ④ TEMPORARY PAVEMENT MARKINGS, LETTERS AND SYMBOLS
 - ⑤ TEMPORARY PAVEMENT MARKINGS, SOLID WHITE LINE (600 mm) STOP BAR

NOTE:
FOR TRAFFIC CONTROL & PROTECTION USE STATE STD. #701301, 701606, 701701 AND DIST. DETAILS FOR SIDE ROAD, INTERSECTION AND DRIVEWAYS.

REVISIONS	
NAME	DATE

ILLINOIS DEPARTMENT OF TRANSPORTATION
SUGGESTED STAGES OF CONSTRUCTION
AND TRAFFIC CONTROL
STAGE III
MAIN ST. AND COURT ST.

SCALE 1:500
DATE 10/17/2011

DRAWN BY
CHECKED BY