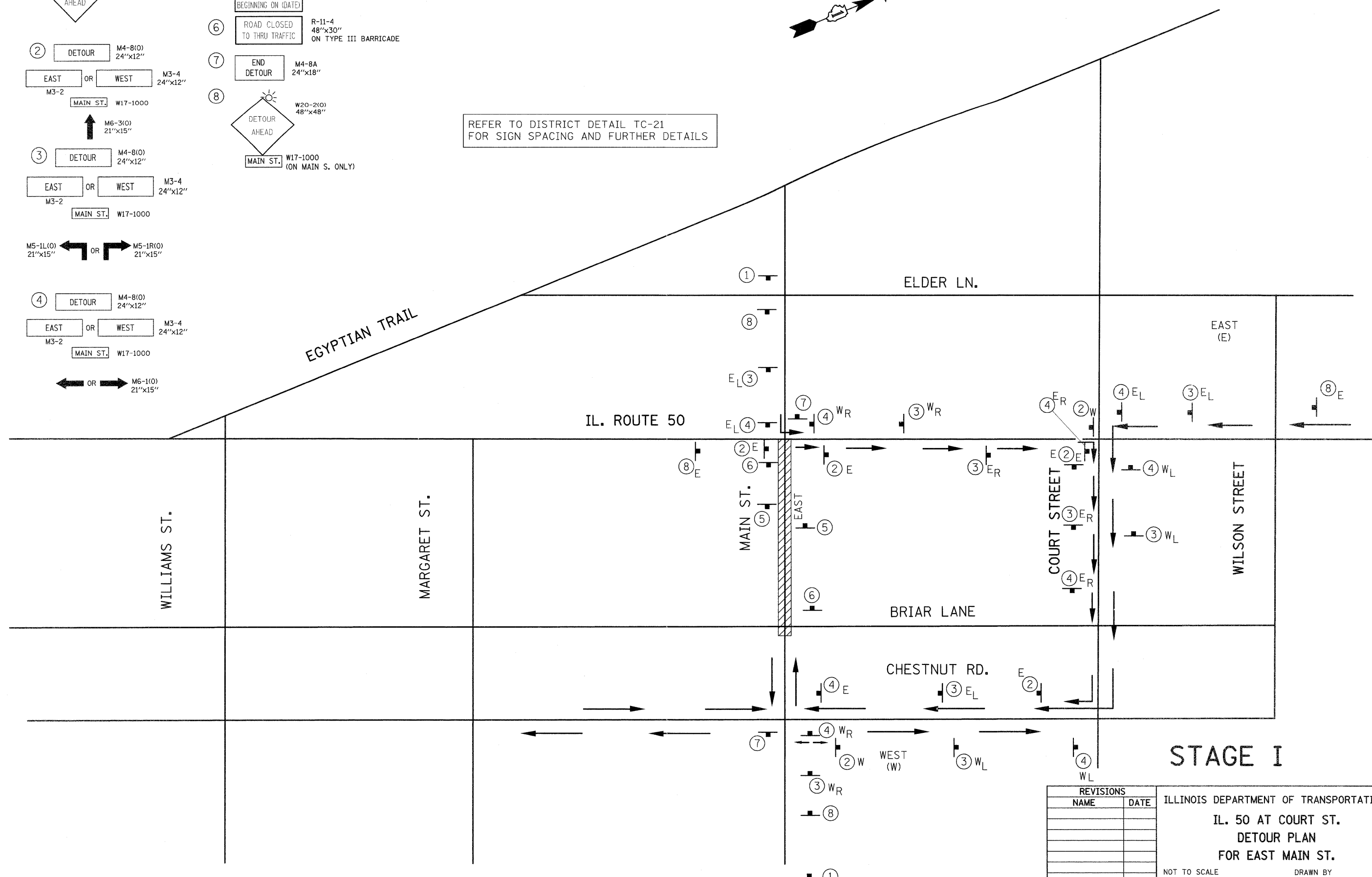
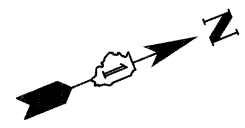


F.A.P. RTE.	SECTION	COUNTY	TOTAL SHEETS	SHEET NO.
840	143N	WILL	121	31
STA.		TO STA.		
FED. ROAD DIST. NO.		ILLINOIS FED. AID PROJECT		
CONTRACT NO. - 60445				

LEGEND

- ① ROAD CLOSED AHEAD W20-3(0) 48"x48"
- ② DETOUR M4-8(0) 24"x12"
EAST OR WEST M3-4 24"x12"
MAIN ST. W17-1000
M6-3(0) 21"x15"
- ③ DETOUR M4-8(0) 24"x12"
EAST OR WEST M3-4 24"x12"
MAIN ST. W17-1000
M5-1L(0) 21"x15" OR M5-1R(0) 21"x15"
- ④ DETOUR M4-8(0) 24"x12"
EAST OR WEST M3-4 24"x12"
MAIN ST. W17-1000
M6-1(0) 21"x15"
- ⑤ MAIN ST. WILL BE CLOSED TO THRU TRAFFIC BEGINNING ON (DATE)
- ⑥ ROAD CLOSED TO THRU TRAFFIC R-11-4 48"x30" ON TYPE III BARRICADE
- ⑦ END DETOUR M4-8A 24"x18"
- ⑧ DETOUR AHEAD W20-2(0) 48"x48"
MAIN ST. W17-1000 (ON MAIN S. ONLY)

REFER TO DISTRICT DETAIL TC-21 FOR SIGN SPACING AND FURTHER DETAILS



REVISIONS	
NAME	DATE

ILLINOIS DEPARTMENT OF TRANSPORTATION
 IL. 50 AT COURT ST.
 DETOUR PLAN
 FOR EAST MAIN ST.
 NOT TO SCALE
 DATE 10/17/2011
 DRAWN BY
 CHECKED BY