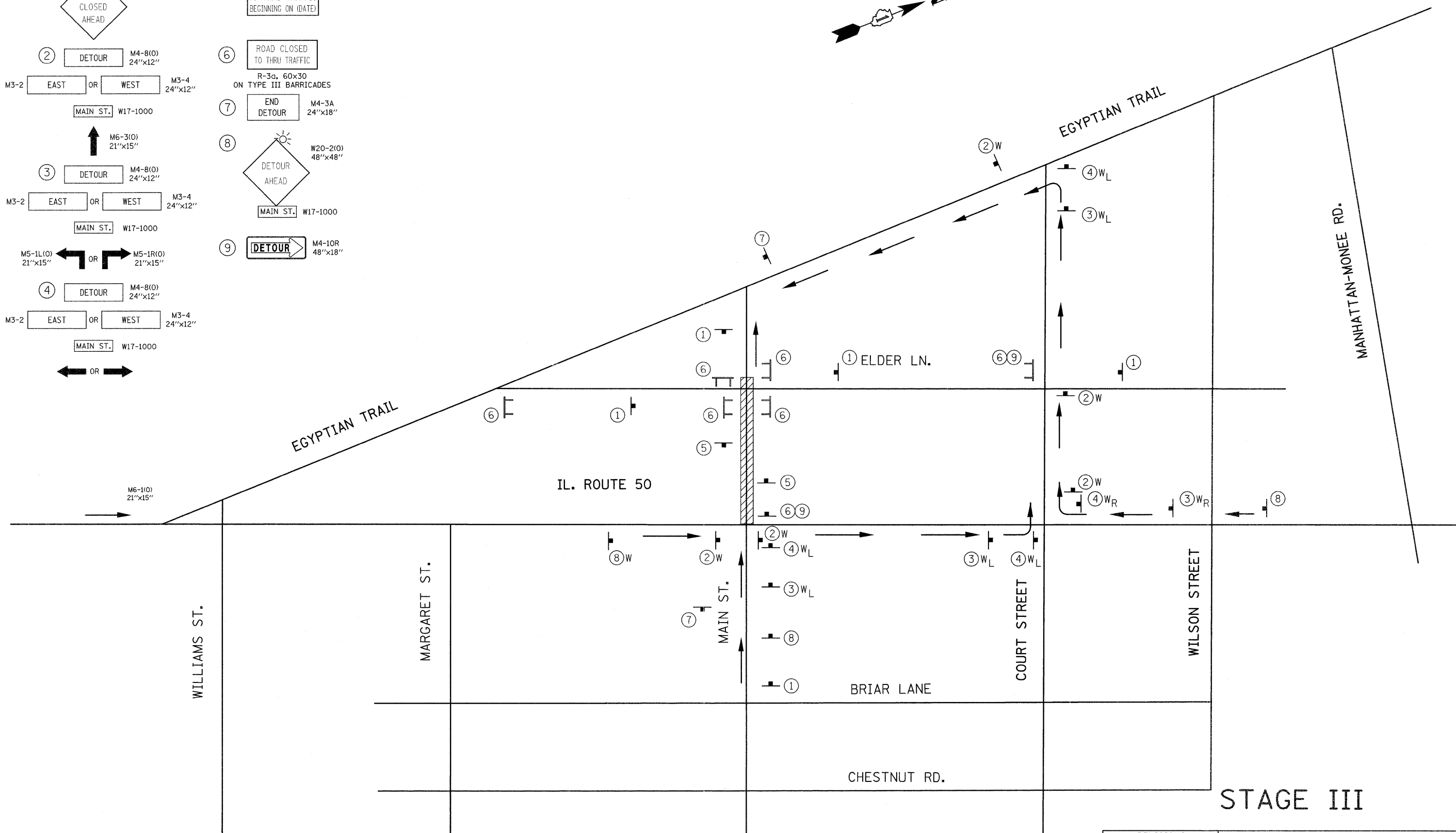
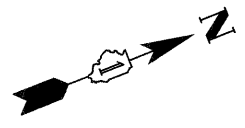


F.A.P. RTE.	SECTION	COUNTY	TOTAL SHEETS	SHEET NO.
840	143N	WILL	121	32
STA.		TO STA.		
FED. ROAD DIST. NO.		ILLINOIS FED. AID PROJECT		
CONTRACT NO. - 60445				

**LEGEND**

- ① ROAD CLOSED AHEAD W20-3(O) 48"x48"
- ② DETOUR M4-8(O) 24"x12"
- M3-2 EAST OR WEST M3-4 24"x12"
- MAIN ST. W17-1000
- M6-3(O) 21"x15"
- ③ DETOUR M4-8(O) 24"x12"
- M3-2 EAST OR WEST M3-4 24"x12"
- MAIN ST. W17-1000
- M5-1L(O) 21"x15" OR M5-1R(O) 21"x15"
- ④ DETOUR M4-8(O) 24"x12"
- M3-2 EAST OR WEST M3-4 24"x12"
- MAIN ST. W17-1000
- M6-1(O) 21"x15"
- ⑤ MAIN ST. WILL BE CLOSED TO THRU TRAFFIC BEGINNING ON (DATE)
- ⑥ ROAD CLOSED TO THRU TRAFFIC R-3g, 60x30 ON TYPE III BARRICADES
- ⑦ END DETOUR M4-3A 24"x18"
- ⑧ DETOUR AHEAD W20-2(O) 48"x48"
- MAIN ST. W17-1000
- ⑨ DETOUR M4-10R 48"x18"

REFER TO DISTRICT DETAIL TC-21 FOR SIGN SPACING & FURTHER DETAILS



STAGE III

REVISIONS		ILLINOIS DEPARTMENT OF TRANSPORTATION
NAME	DATE	
		IL. 50 AT COURT ST. DETOUR PLAN
NOT TO SCALE		DRAWN BY
DATE 10/17/2011		CHECKED BY