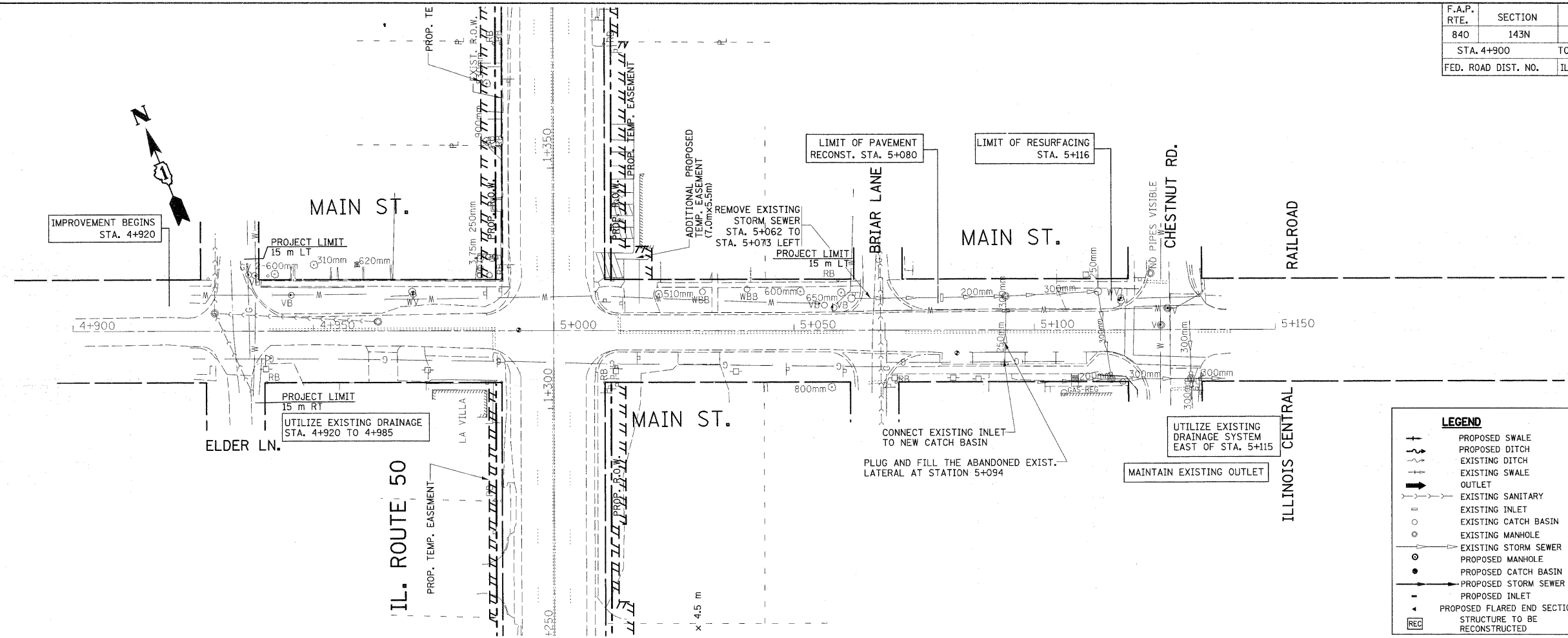


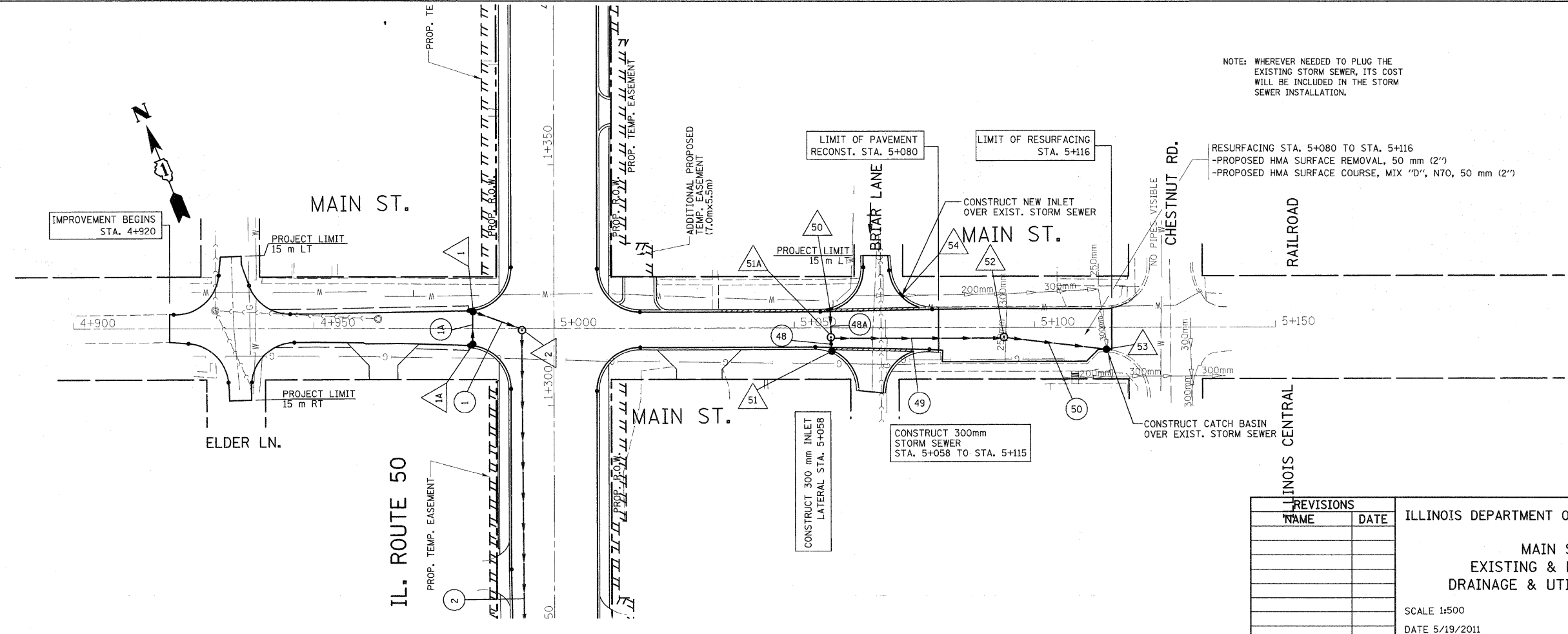
F.A.P. RTE.	SECTION	COUNTY	TOTAL SHEETS	SHEET NO.
840	143N	WILL	121	44
STA. 4+900		TO STA. 5+150		
FED. ROAD DIST. NO.		ILLINOIS FED. AID PROJECT		



LEGEND

- +— PROPOSED SWALE
- - - - - PROPOSED DITCH
- - - - - EXISTING DITCH
- +--+ EXISTING SWALE
- +— OUTLET
- - - - - EXISTING SANITARY
- +— EXISTING INLET
- EXISTING CATCH BASIN
- EXISTING MANHOLE
- EXISTING STORM SEWER
- PROPOSED MANHOLE
- PROPOSED CATCH BASIN
- PROPOSED STORM SEWER
- +— PROPOSED INLET
- +— PROPOSED FLARED END SECTION
- REC STRUCTURE TO BE RECONSTRUCTED

EXISTING



PROPOSED

NOTE: WHEREVER NEEDED TO PLUG THE EXISTING STORM SEWER, ITS COST WILL BE INCLUDED IN THE STORM SEWER INSTALLATION.

RESURFACING STA. 5+080 TO STA. 5+116
 -PROPOSED HMA SURFACE REMOVAL, 50 mm (2")
 -PROPOSED HMA SURFACE COURSE, MIX "D", N70, 50 mm (2")

REVISIONS	
NAME	DATE

ILLINOIS DEPARTMENT OF TRANSPORTATION

**MAIN ST.
 EXISTING & PROPOSED
 DRAINAGE & UTILIES PLAN**

SCALE 1:500
 DATE 5/19/2011

DRAWN BY
 CHECKED BY