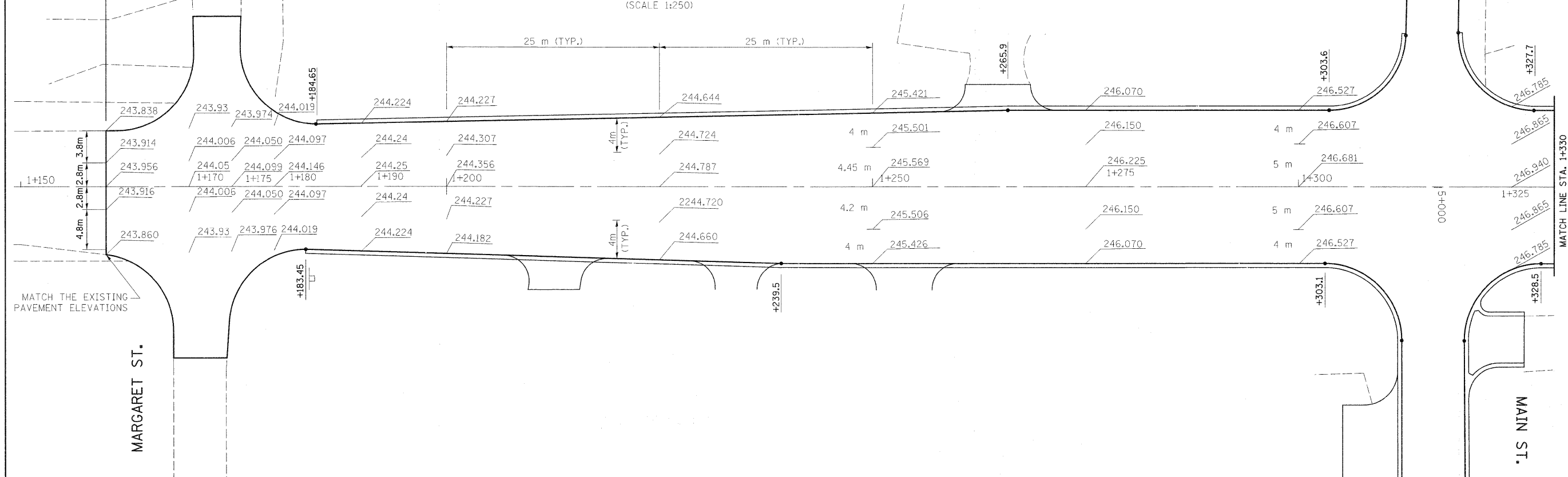


CONTRACT # 60495

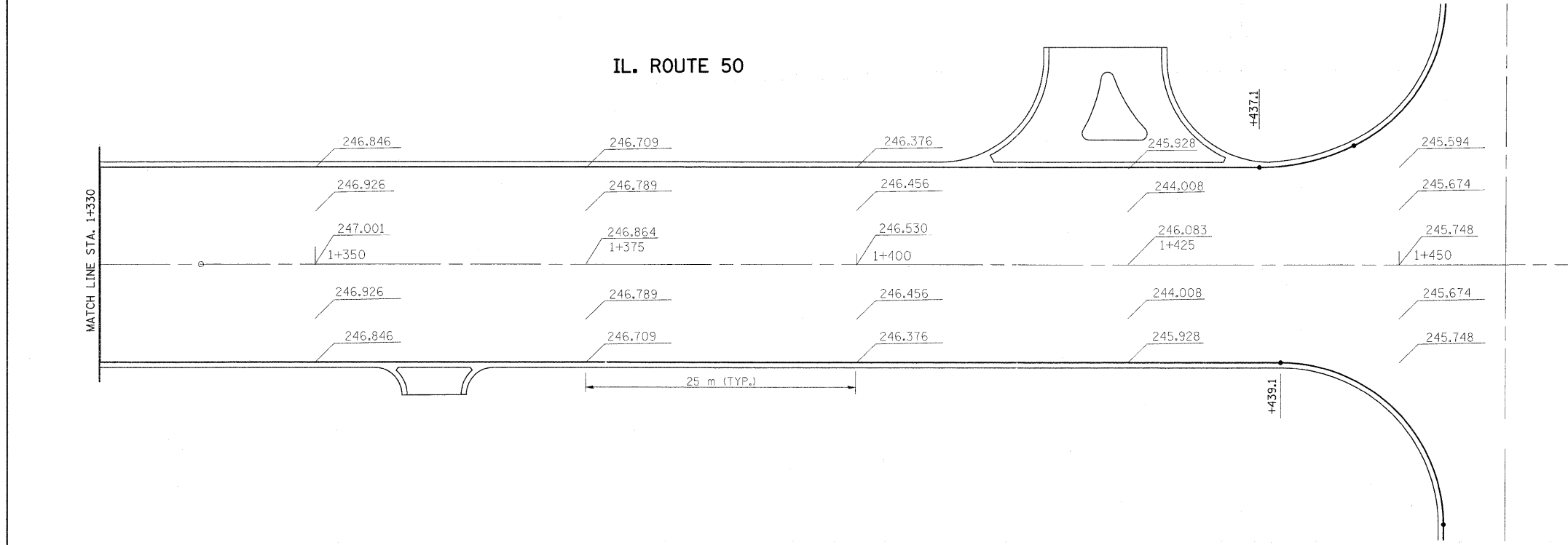
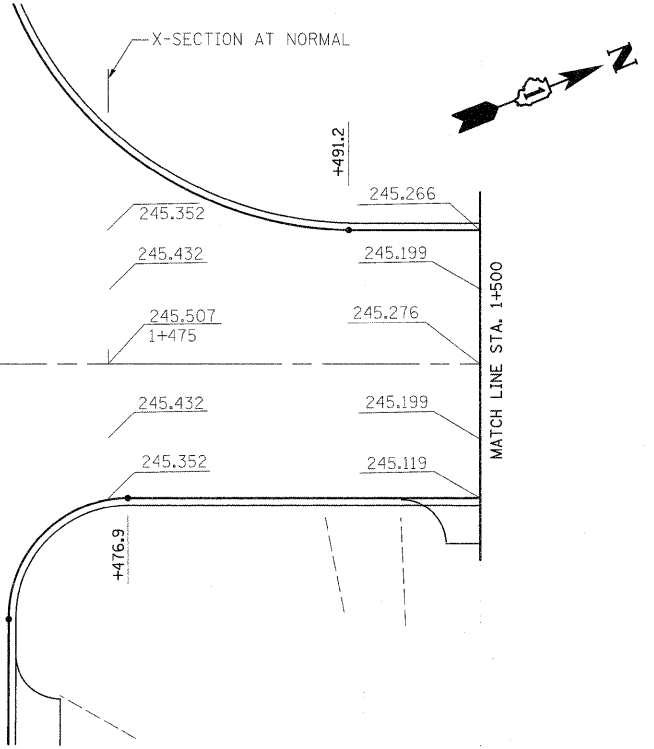
F.A.P. RTE.	SECTION	COUNTY	TOTAL SHEETS	SHEET NO.
840	143N	WILL	121	54
STA. 1430		TO STA. 1435		
FED. ROAD DIST. NO.		ILLINOIS FED. AID PROJECT		

BM #3: "□" CUT ON SOUTH END OF TOP OF RETAINING WALL
AT NW CORNER OF MARGARET ST. AND IL. RTE. 50.
ELEVATION: 244.713

IL. ROUTE 50
(SCALE 1:250)



IL. ROUTE 50



REVISIONS	
NAME	DATE

ILLINOIS DEPARTMENT OF TRANSPORTATION
**PROPOSED PAVEMENT ELEVATIONS
FOR IL. ROUTE 50**

SCALE 1:250
DATE 5/11/2011
DRAWN BY CADD
CHECKED BY