

F.A.P. RTE.	SECTION	COUNTY	TOTAL SHEETS	SHEET NO.
840		WILL	121	57
STA. 1+000		TO STA. 1+350		
FED. ROAD DIST. NO.		ILLINOIS FED. AID PROJECT		

LANDSCAPING GENERAL NOTES

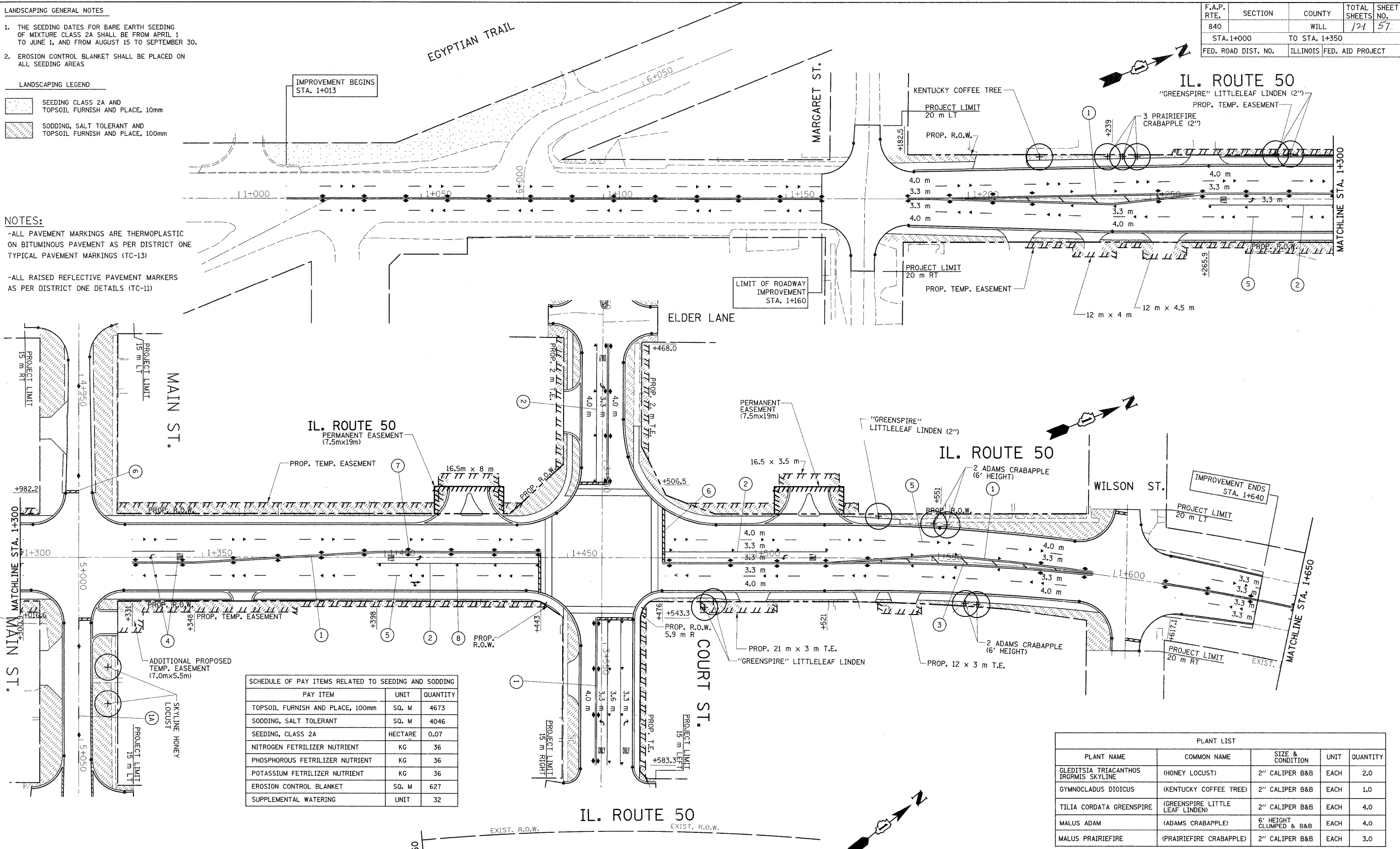
1. THE SEEDING DATES FOR BARE EARTH SEEDING OF MIXTURE CLASS 2A SHALL BE FROM APRIL 1 TO JUNE 1, AND FROM AUGUST 15 TO SEPTEMBER 30.
2. EROSION CONTROL BLANKET SHALL BE PLACED ON ALL SEEDING AREAS

LANDSCAPING LEGEND

- SEEDING CLASS 2A AND TOPSOIL FURNISH AND PLACE, 10mm
- SODDING, SALT TOLERANT AND TOPSOIL FURNISH AND PLACE, 100mm

NOTES:

- ALL PAVEMENT MARKINGS ARE THERMOPLASTIC ON BITUMINOUS PAVEMENT AS PER DISTRICT ONE TYPICAL PAVEMENT MARKINGS (TC-13)
- ALL RAISED REFLECTIVE PAVEMENT MARKERS AS PER DISTRICT ONE DETAILS (TC-11)



SCHEDULE OF PAY ITEMS RELATED TO SEEDING AND SODDING

PAY ITEM	UNIT	QUANTITY
TOPSOIL FURNISH AND PLACE, 100mm	SQ. M	4673
SODDING, SALT TOLERANT	SQ. M	4046
SEEDING, CLASS 2A	HECTARE	0.07
NITROGEN FETRIIZER NUTRIENT	KG	36
PHOSPHOROUS FETRIIZER NUTRIENT	KG	36
POTASSIUM FETRIIZER NUTRIENT	KG	36
EROSION CONTROL BLANKET	SQ. M	627
SUPPLEMENTAL WATERING	UNIT	32

PLANT LIST

PLANT NAME	COMMON NAME	SIZE & CONDITION	UNIT	QUANTITY
GLEDTISIA TRIACANTHOS IRGRMIS SKYLINE	(HONEY LOCUST)	2" CALIPER B&B	EACH	2.0
GYMNOCLADUS DIOICUS	(KENTUCKY COFFEE TREE)	2" CALIPER B&B	EACH	1.0
TILIA CORDATA GREENSPIRE	(GREENSPIRE LITTLE LEAF LINDEN)	2" CALIPER B&B	EACH	4.0
MALUS ADAM	(ADAMS CRABAPPLE)	6' HEIGHT CLUMPED & B&B	EACH	4.0
MALUS PRAIRIEFIRE	(PRAIRIEFIRE CRABAPPLE)	2" CALIPER B&B	EACH	3.0

- 1 THERMOPLASTIC PAVEMENT MARKING DOUBLE SOLID YELLOW, CENTERLINE 250 mm (11") C-C
- 2 THERMOPLASTIC PAVEMENT MARKING 100mm (4") SKIP-DASH YELLOW (9m SKIP 3m DASH)
- 3 THERMOPLASTIC PAVEMENT MARKING 150mm (6") SOLID WHITE
- 4 THERMOPLASTIC PAVEMENT MARKING 300mm (12") AT 45° DIAGONALS, SOLID YELLOW
- 5 THERMOPLASTIC PAVEMENT MARKING LETTERS & SYMBOLS
- 6 THERMOPLASTIC PAVEMENT MARKING 100mm (4") SKIP-DASH WHITE (9m SKIP 3m DASH) LANE LINES
- 7 THERMOPLASTIC PAVEMENT MARKING 600mm (24") SOLID WHITE, STOP BAR
- 8 RAISED REFLECTIVE PAVEMENT MARKERS AMBER
- 9 RAISED REFLECTIVE PAVEMENT MARKERS CRYSTAL

REVISIONS

NAME	DATE

ILLINOIS DEPARTMENT OF TRANSPORTATION
 ILL. RTE. 50
 PAVEMENT MARKING & LANDSCAPING PLAN

SCALE 1:500
 DATE 10/18/2011
 DRAWN BY
 CHECKED BY